

Anatomická pitva

den 3.a 4.

Kurs B –den 4

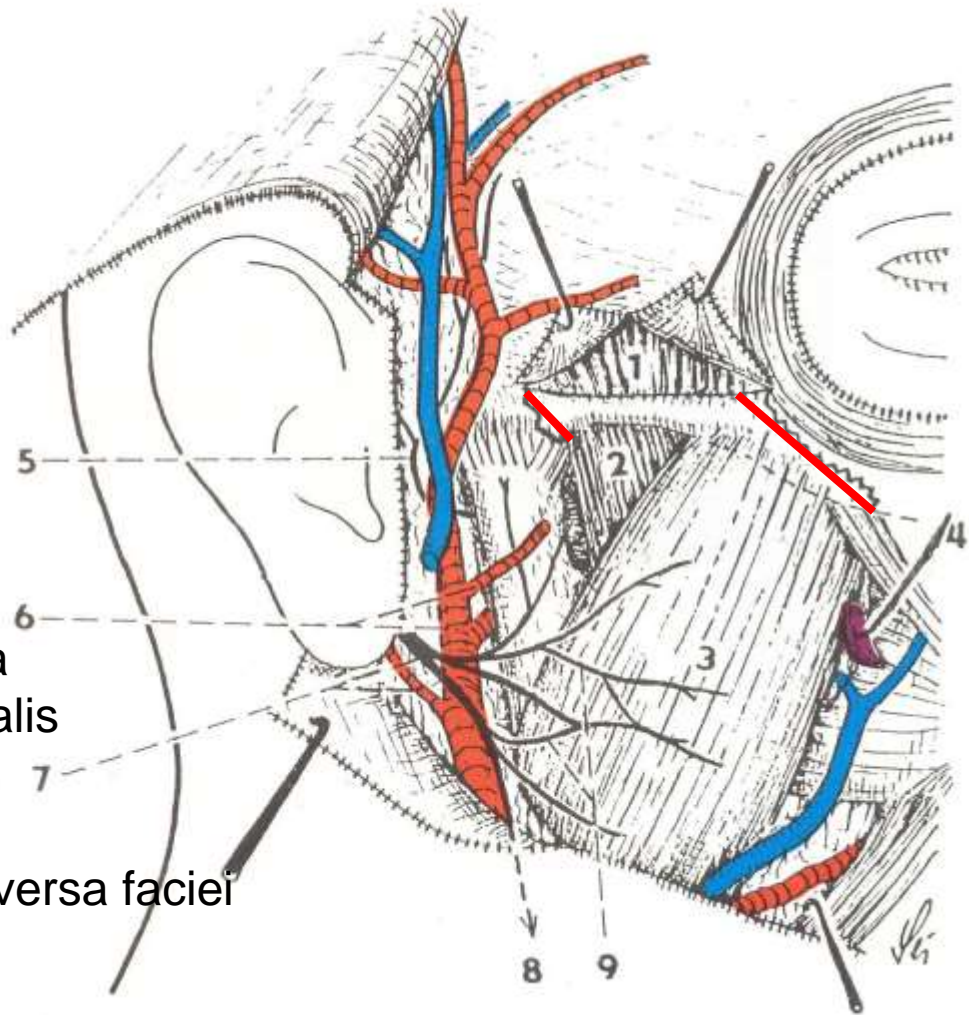
- ventrální strana
- **H: na jednom těle** vstup do fossa infratemporalis /stranu určí asistent/:
- odstranit zbytek **gl. parotis**, očistit povrch m. masseter
- **resekovat: - pons zygomaticus** a odklopit s ním **m. masseter** kaudálně (odloučit s periostem)
- **resekovat - proc. coronoideus** a odklopit s ním **m. temporalis** kraniálně
- **K: trigonum submandibulare et submentale vlevo: glandula et ductus submandibularis, n. lingualis** (jejich zkřížení), **vasa facialia, n. hypoglossus, m. hyoglossus, m. mylohyoideus n. mylohyoideus** et **vasa submentalia** (MA 29-32).
- **trigonum caroticum vpravo - a. carotis int. et ext., v. jugularis int., a. thyroidea superior, a. et n. laryngeus sup., a. lingualis** (Béclardův úhel, **trigonum Pirogovi**), **arcus n. XII. et ansa cervicalis prof.**
- Pitvat **infrahyoidní svaly**

Regiones faciei II

odstranění gl.
parotis

resekce pons
zygomaticus

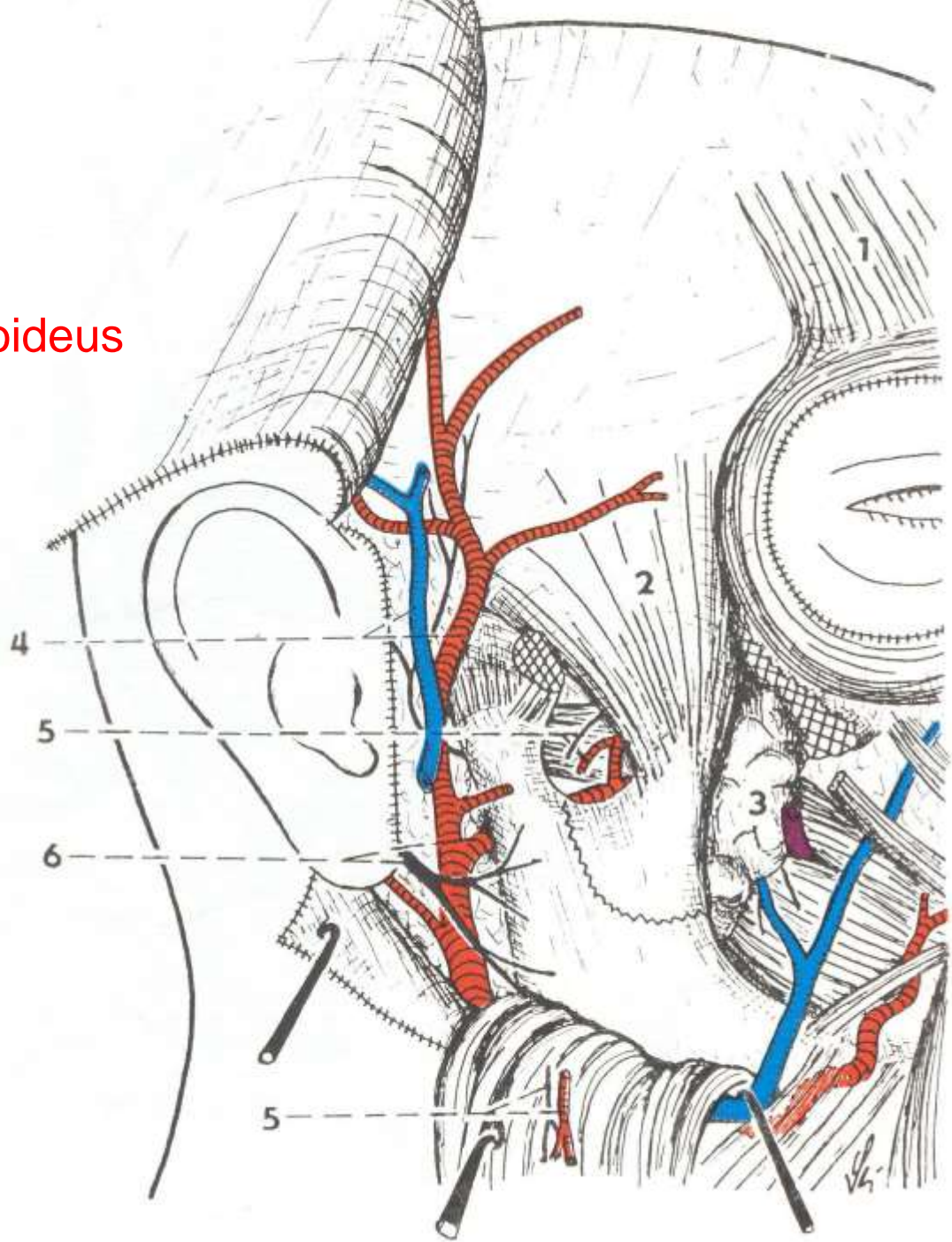
- 1-m.temporalis
2. m.masseter pars profunda
- 3-m.masseter pars superficialis
- 4-ductus parotideus
- 5-n. auriculotemporalis
- 6-a. temporalis spf + a.transversa faciei
- 7-n.VII. + a. stylomastoidea
- 8-r.colli n.VII.
- 9-plexus parotideus



Regiones faciei III

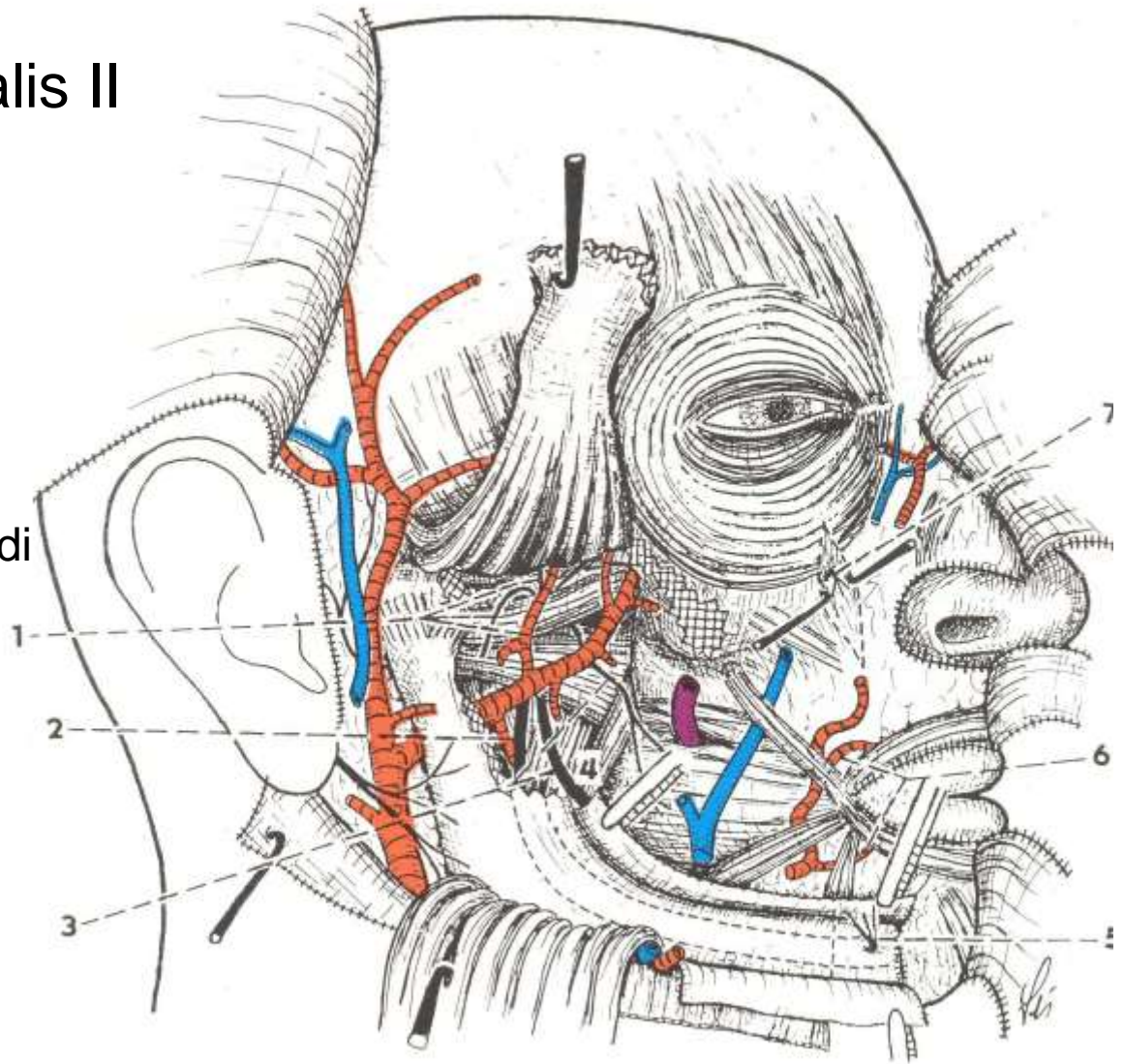
resekce processus coronoideus

- 1-m.frontalis
- 2-m. temporalis
- 3-corpor adiposum buccae
- 4-a+v. temporalis spf
- 5-r. (a.+n.)massetericus
- 6-a. maxillaris a n. VII.

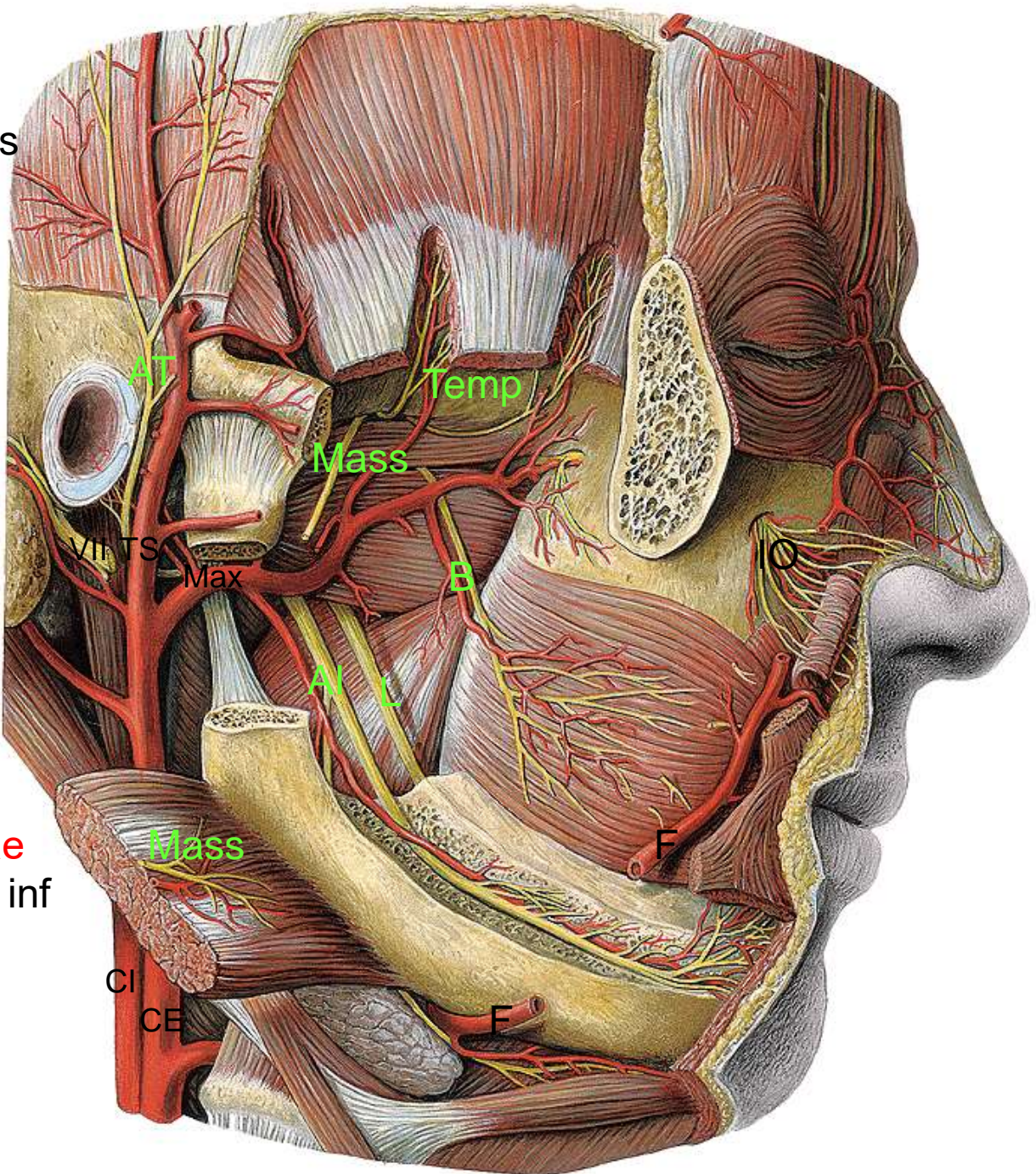


Fossa infratemporalis II

- 1-a+nn. temporales profundi
- 2-a.alveolaris inf
- 3-n. buccalis+ n. lingualis
- 4-m.pterygoideus med
- 5-n. mentalis
- 6-a. labialis sup+ inf
- 7-n. infraorbitalis



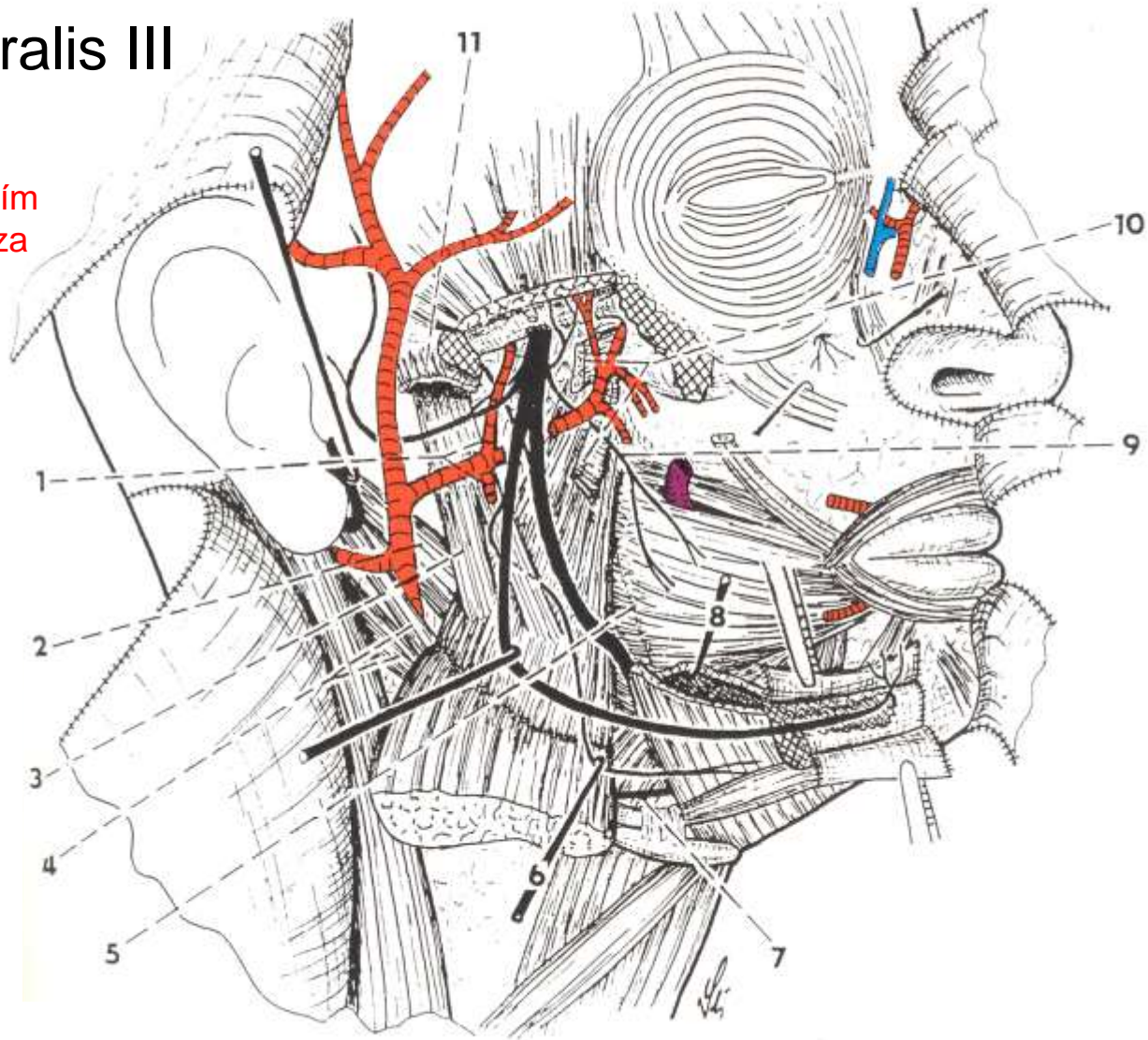
A. maxillaris a n. mandibularis
ve fossa infratemporalis



Vysekán canalis mandibulae
a v něm n.+vasa alveolaria inf

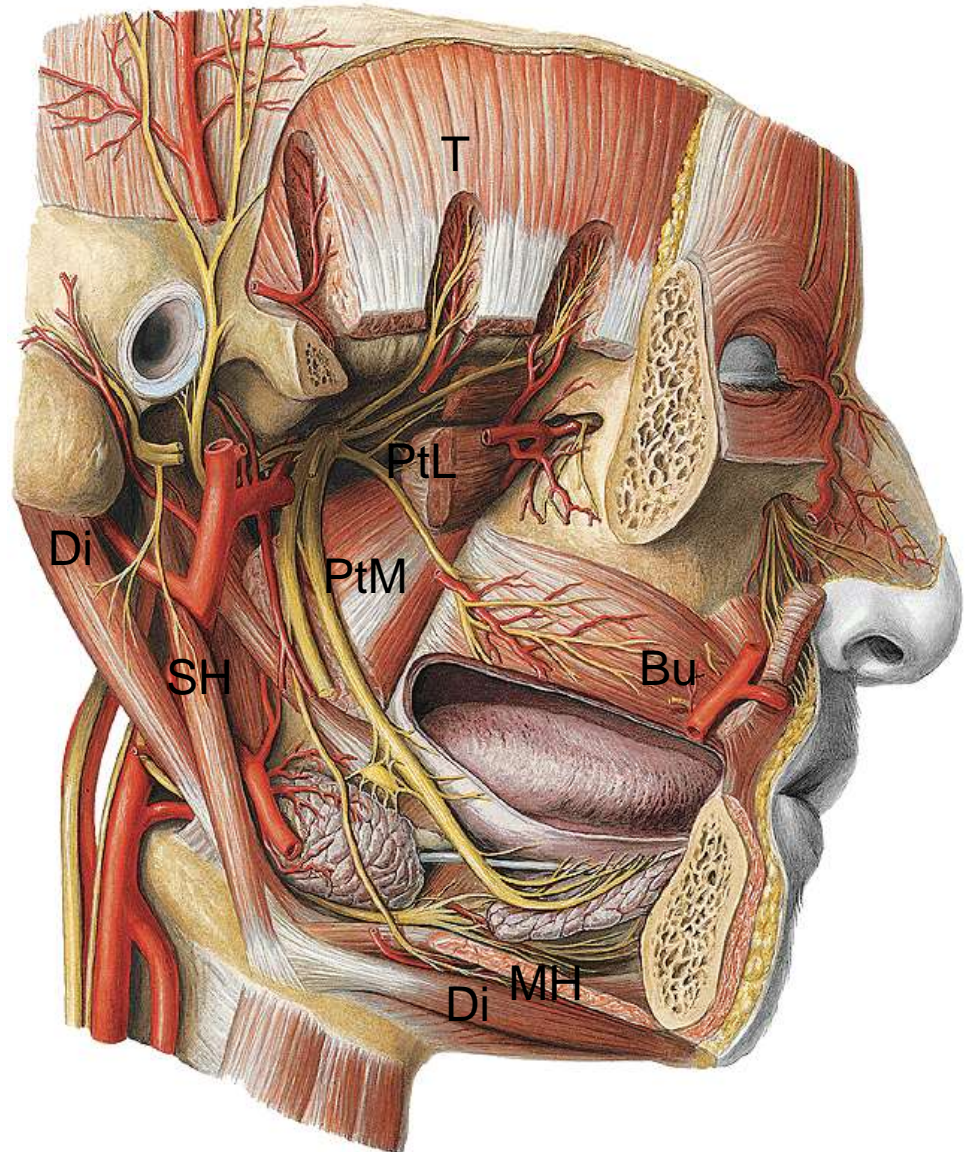
Fossa infratemporalis III

Mandibula
exartikulována v
temporomandibulárním
kloubu a odseknuta za
foramen mentale



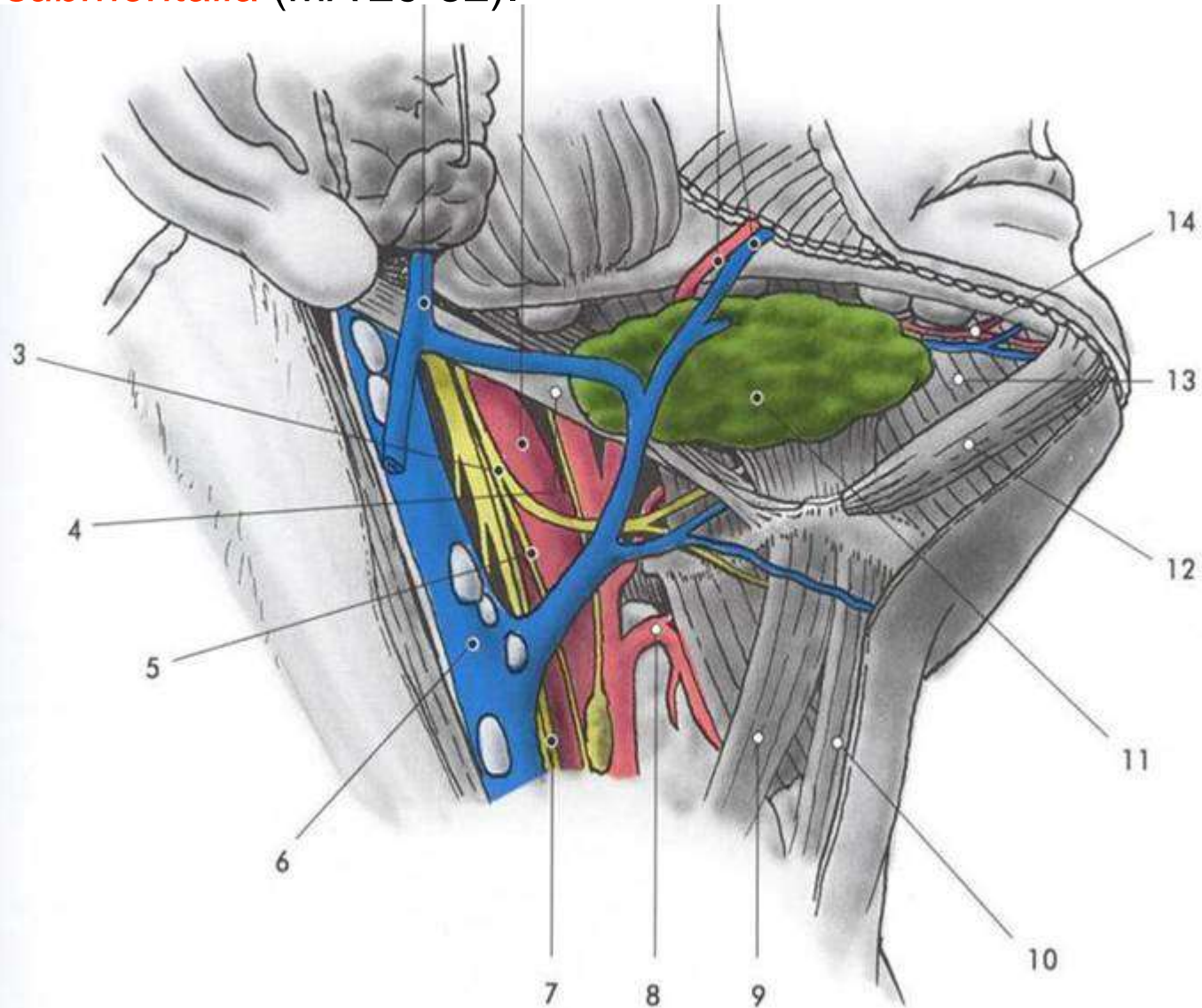
Ggl. submandibulare

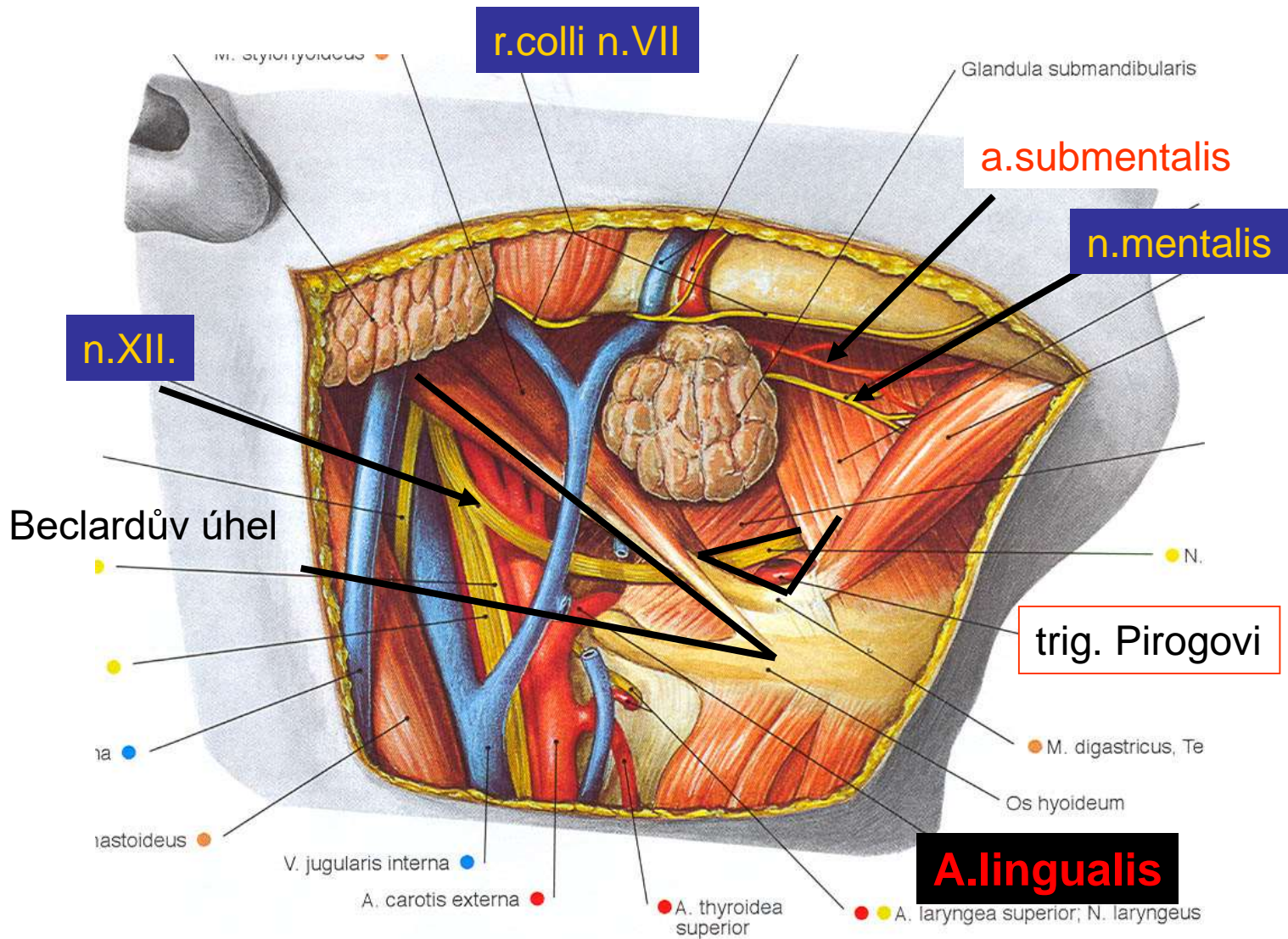
Radix sensitiva – n. lingualis
Radix parasymphatica – chorda tympani
Radix symphatica – plexus a. facialis



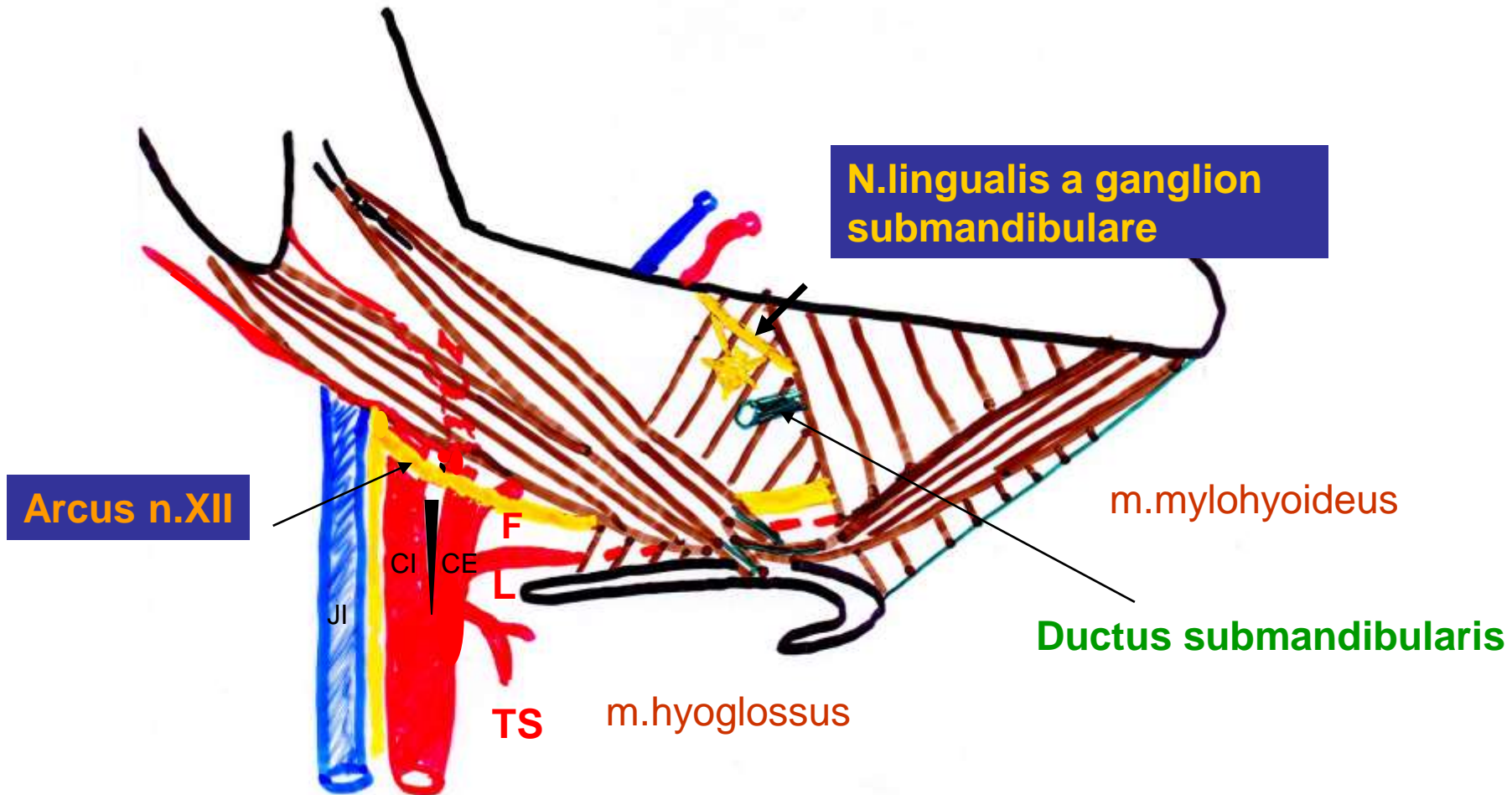
Zásobuje submandibulární a sublinguální žlázu a drobné žl. jazyka

K: trigonum submandibulare et submentale: glandula et ductus submandibularis, *n. lingualis* (jejich zkřížení), *vasa facialia*, *n. hypoglossus*, *m. hyoglossus*, *m. mylohyoideus* *n. mylohyoideus* et *vasa submentalia* (MA 29-32).

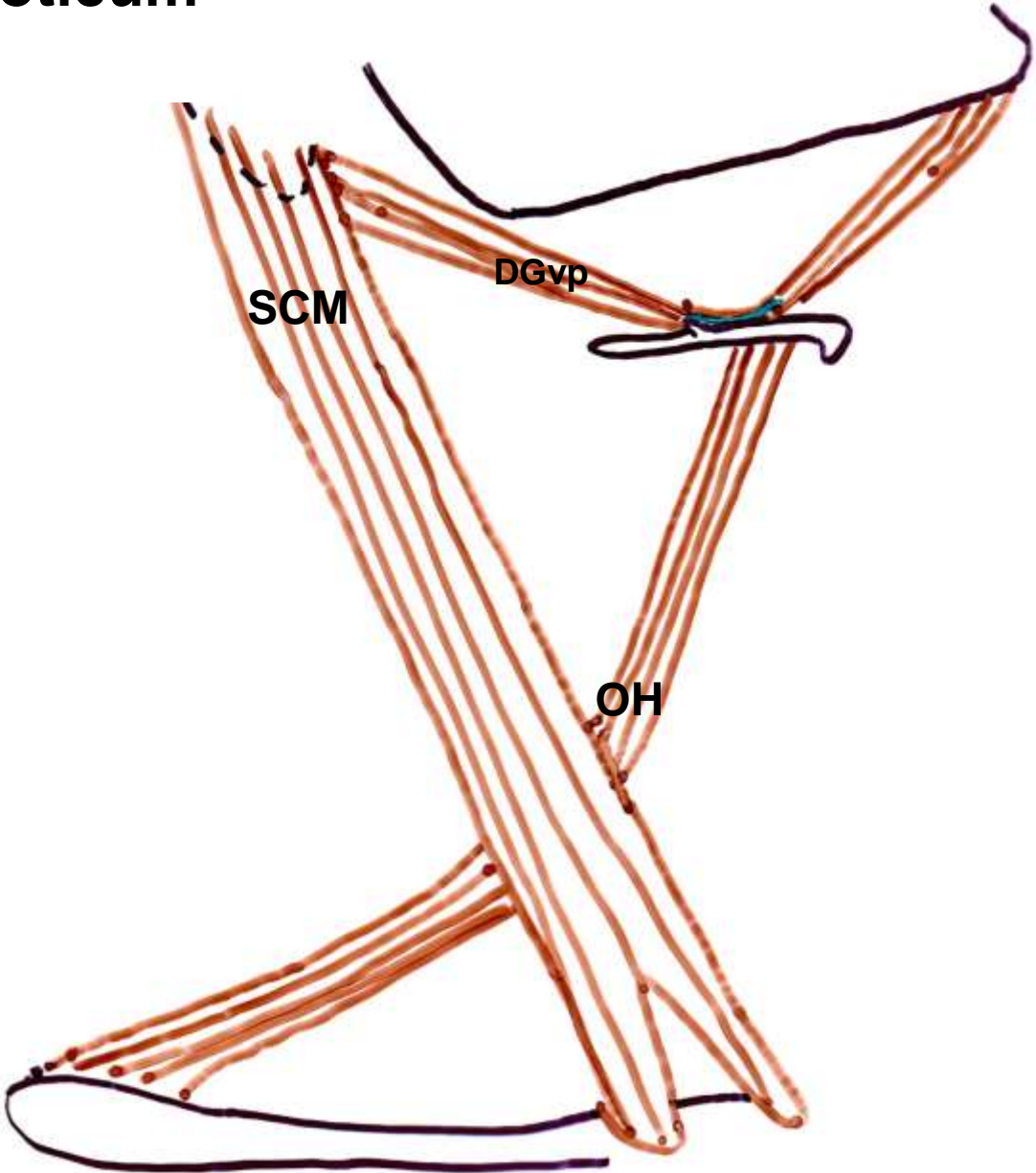


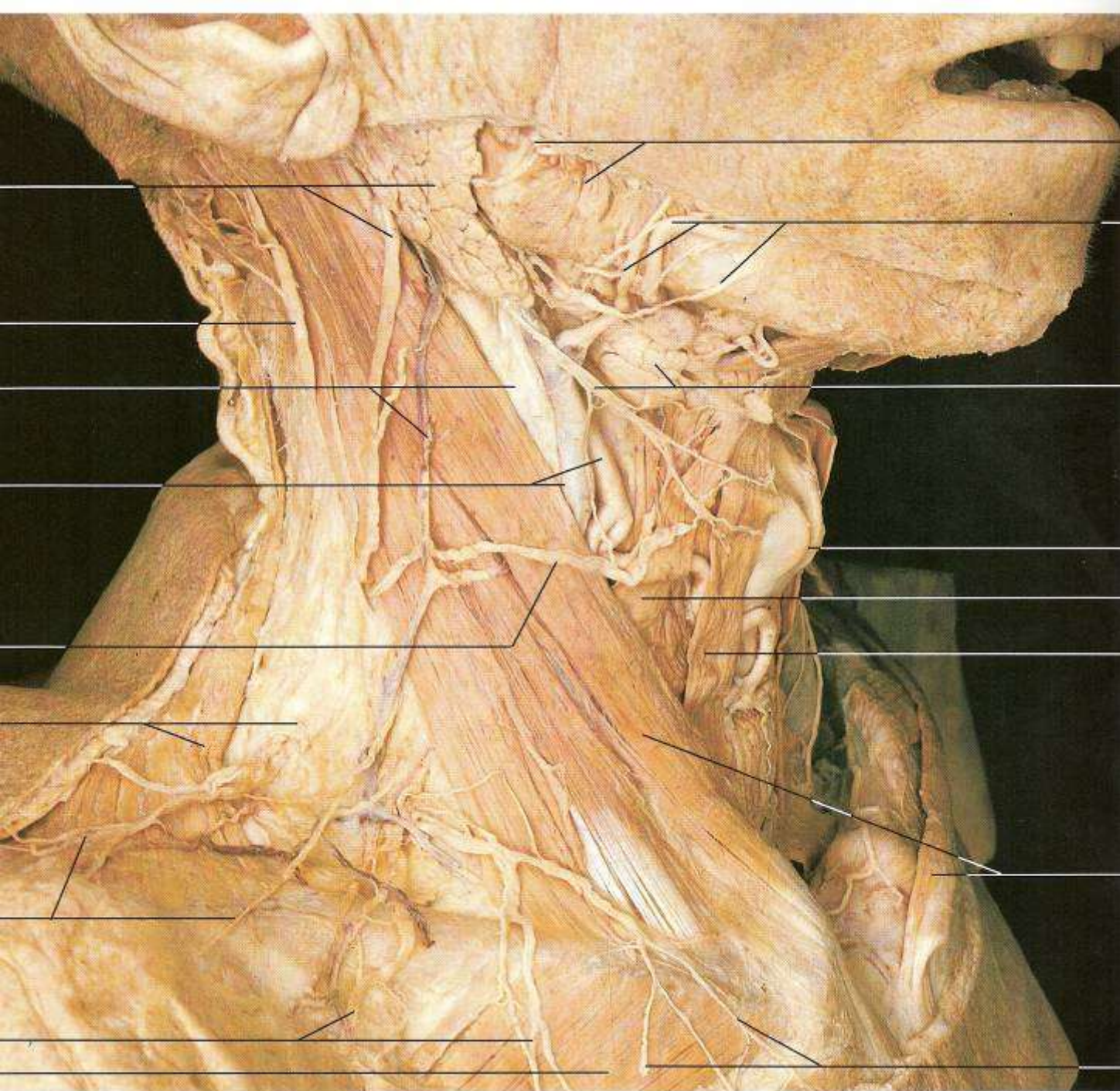


Trigonum submandibulare hluboká vrstva



Trigonum caroticum hranice





Trigonum
caroticum
obsah

A.occipitalis

A.auricularis post

N.XII
(arcus n.hypoglossi)

A.facialis

Radix superior
ansae cervicalis

A.lingualis
(Beclardův úhel)

ma

N.laryngeus sup
(z n.vagus)

A.thyroidea sup.

C3-4

Carotis externa

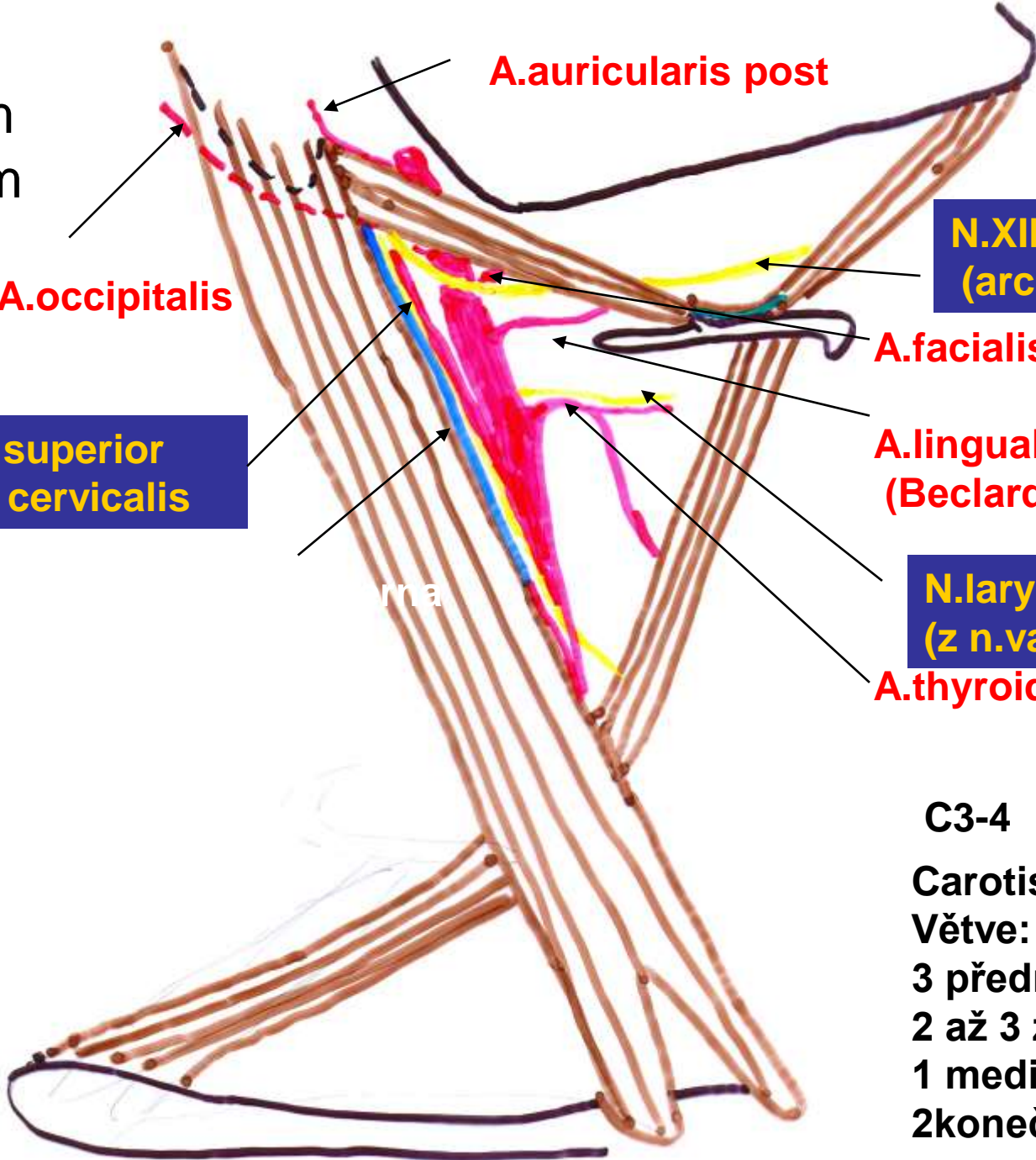
Větve:

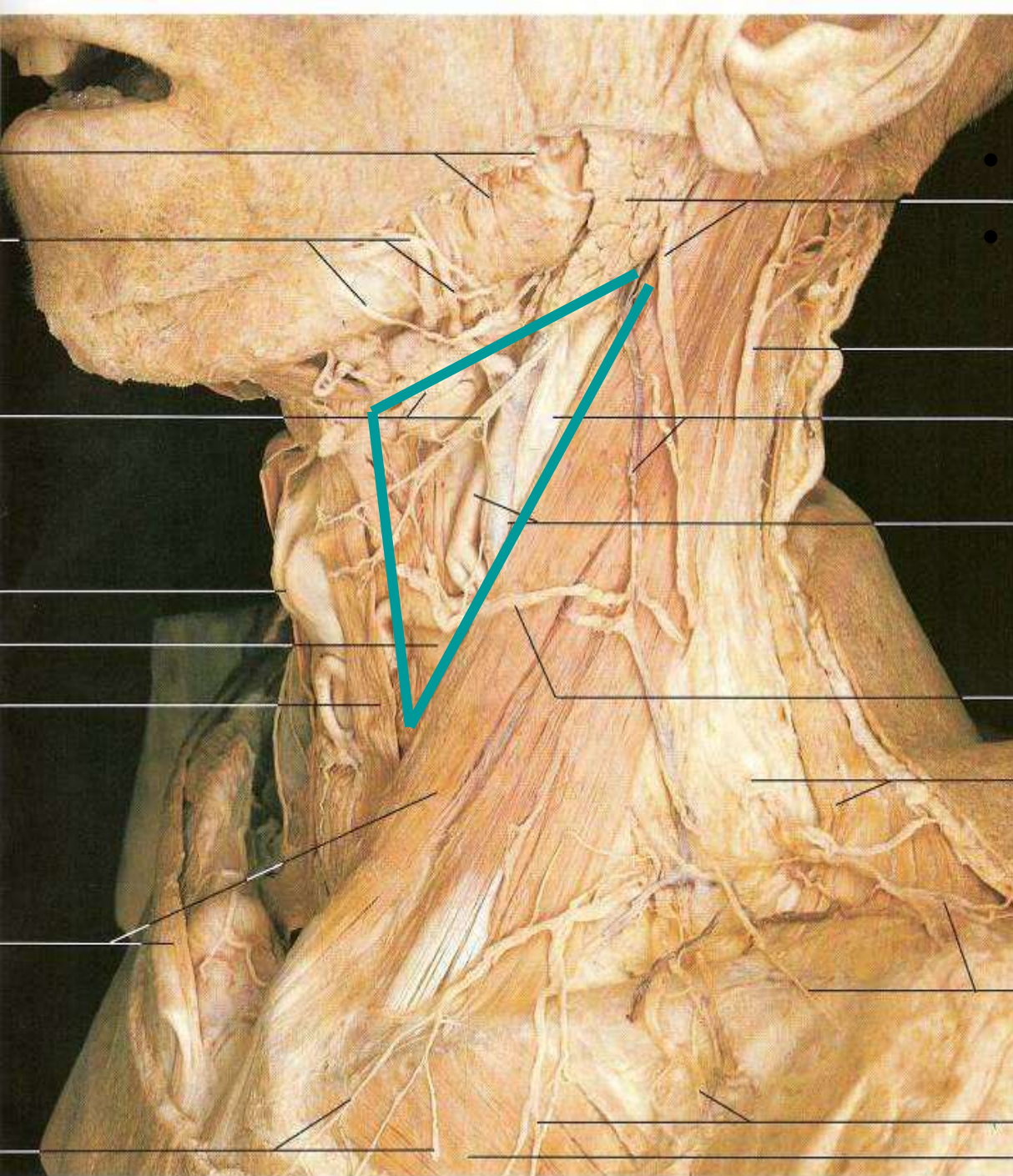
3 přední

2 až 3 zadní

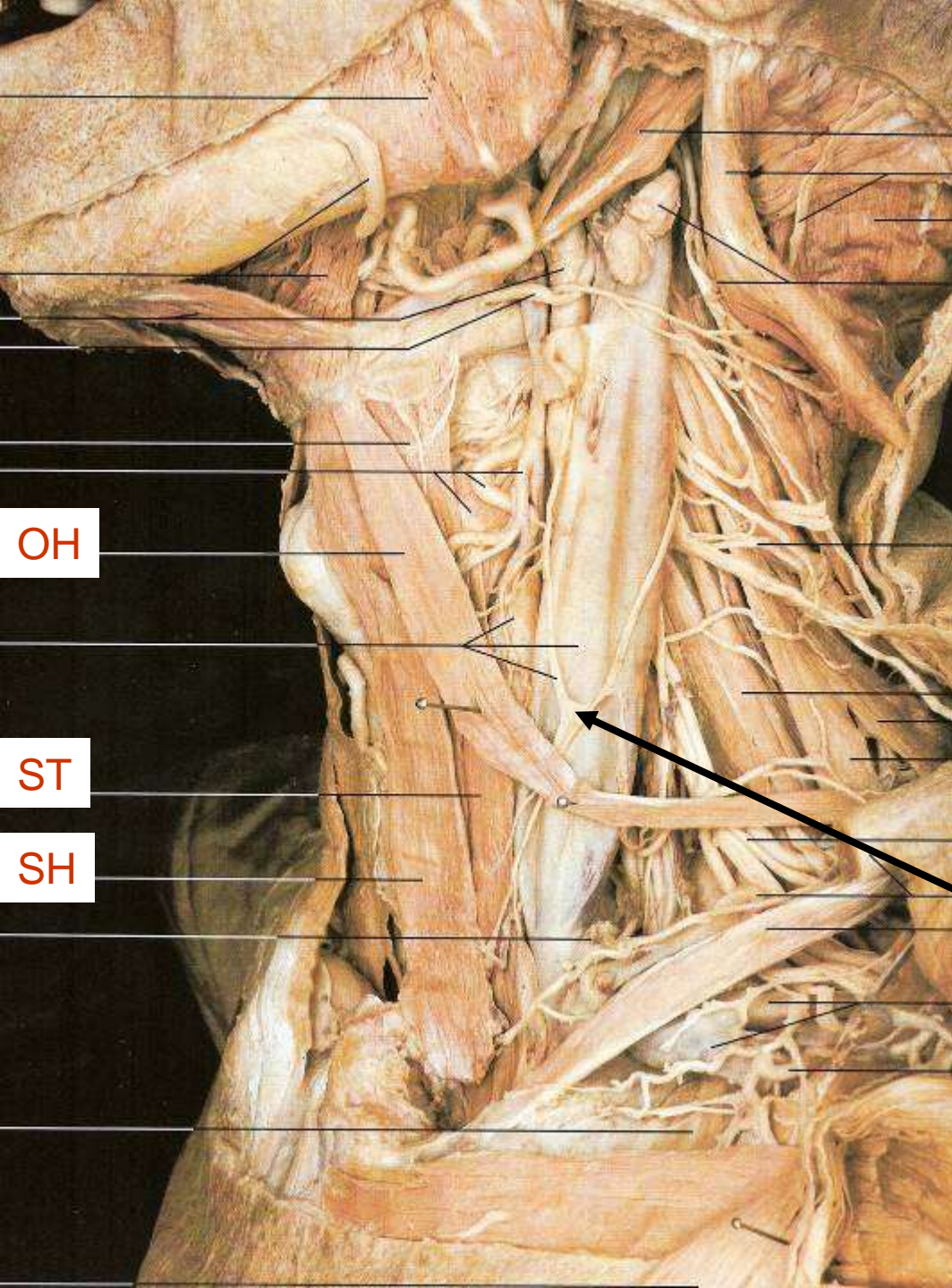
1 mediální **ph.asc.**

2konečné **Max+TS**





- **Trigonum caroticum**
- **Pitvat infrahyoidní svaly (MA 33)**



Trigonum Pirogovi

Beclardův úhel

Infrahyoidní svaly

ansa cervicalis profunda

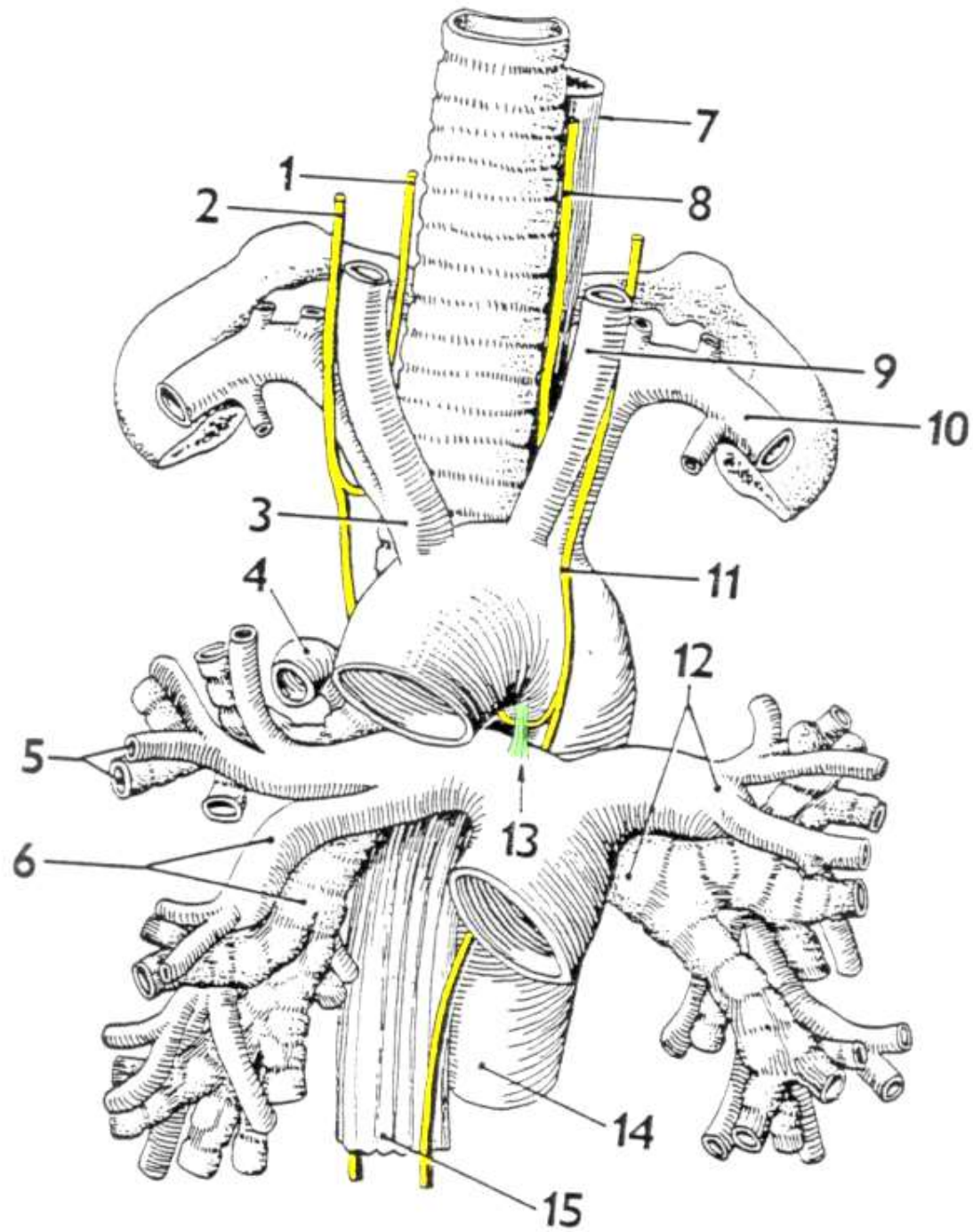
OH

ST

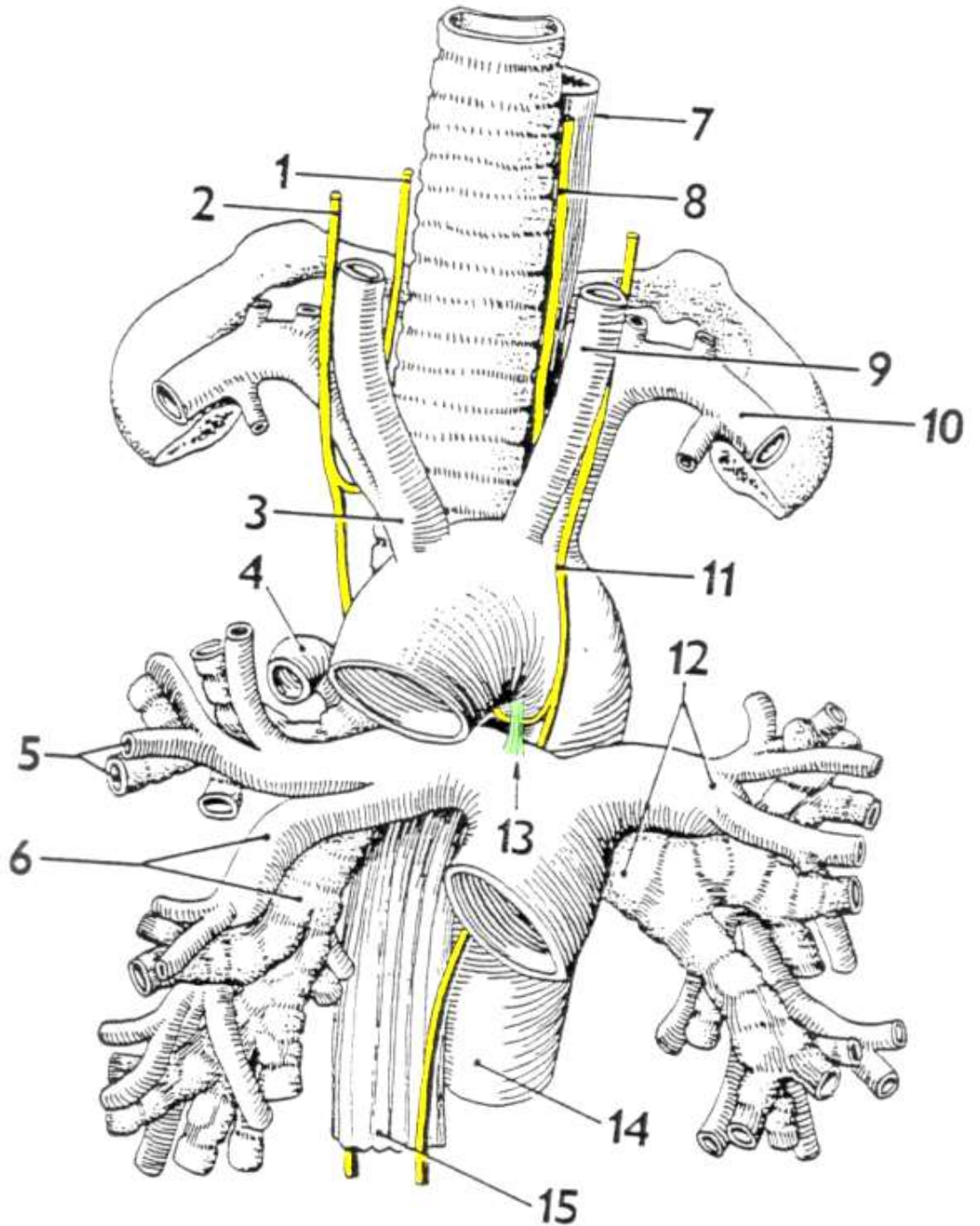
SH

Hrudník

- pitvat **arcus aortae a jeho větve + lig. arteriosum** (MA 52, 53).
- **Vyjmutí pravé plíce** a pitva *větvení bronchů*. Demontrace pravé poloviny dutiny hrudní, **pitva mediastina zprava** (MA 53, 54), odstraňování parietální pleury a **pitva mezižebří** (2-3).
-



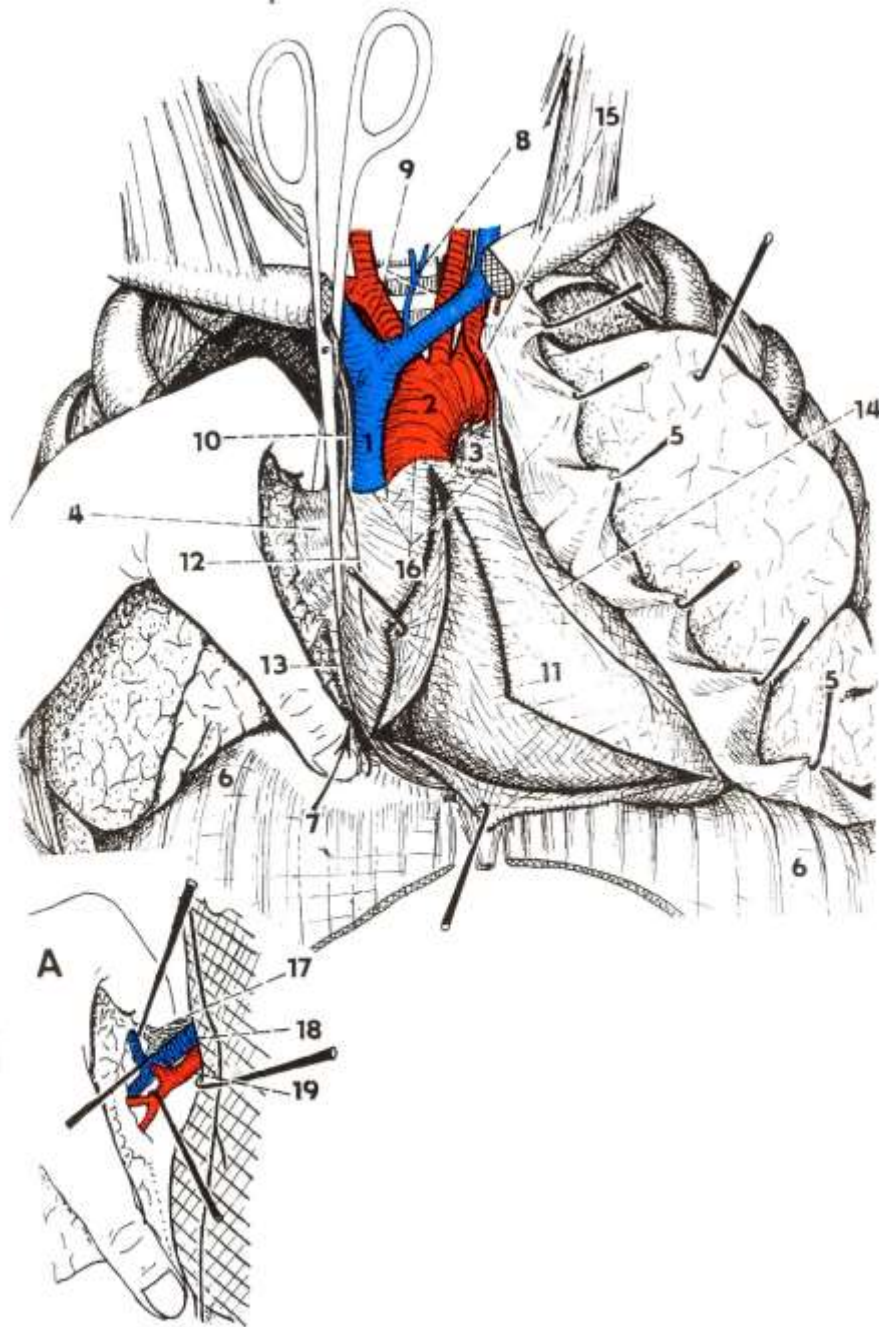
- 1, 8 - n.laryngeus reccurens
- 2, 11 – n. vagus
- 3 – truncus brachiocephalicus
- 4-v. azygos
- 5, 6, – větve bronchů a a. pulmonalis dx
- 7, 15- oesophagus
- 9-a. carotis communis sin
- 10 – a. subclavia sin
- 12- bronchus principalis sin and a. pulmonalis sin
- 13 – lig arteriosum Botalli
- 14- aorta thoracica



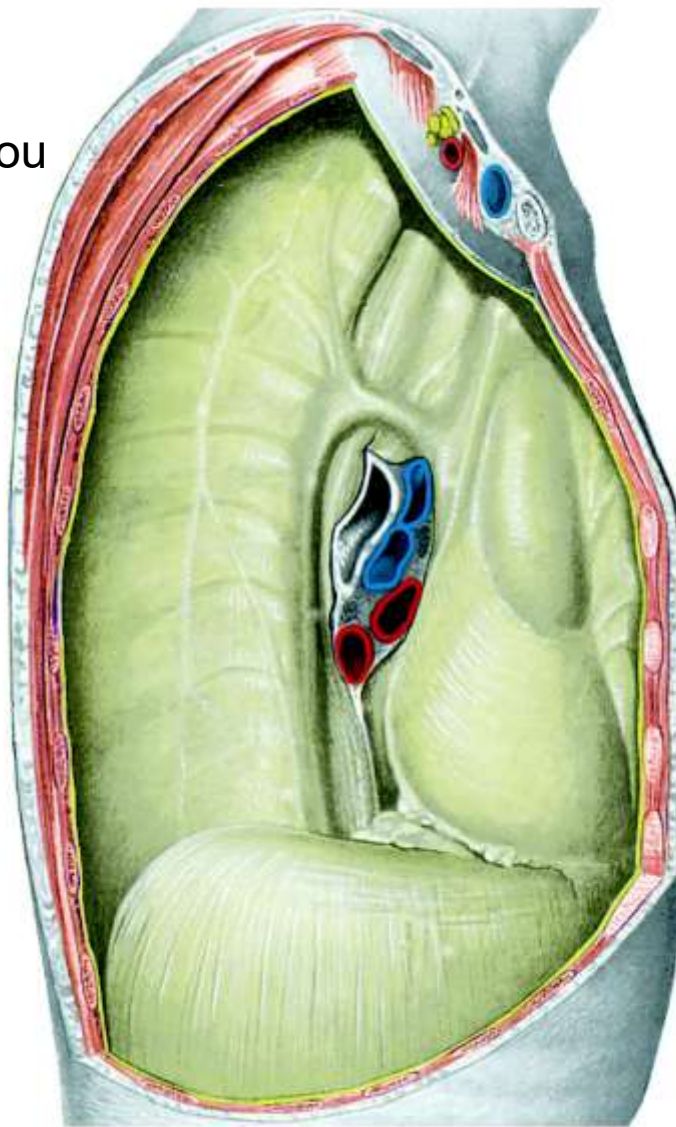
Vyjmutí pravé plíce

! n. frenicus před hilem

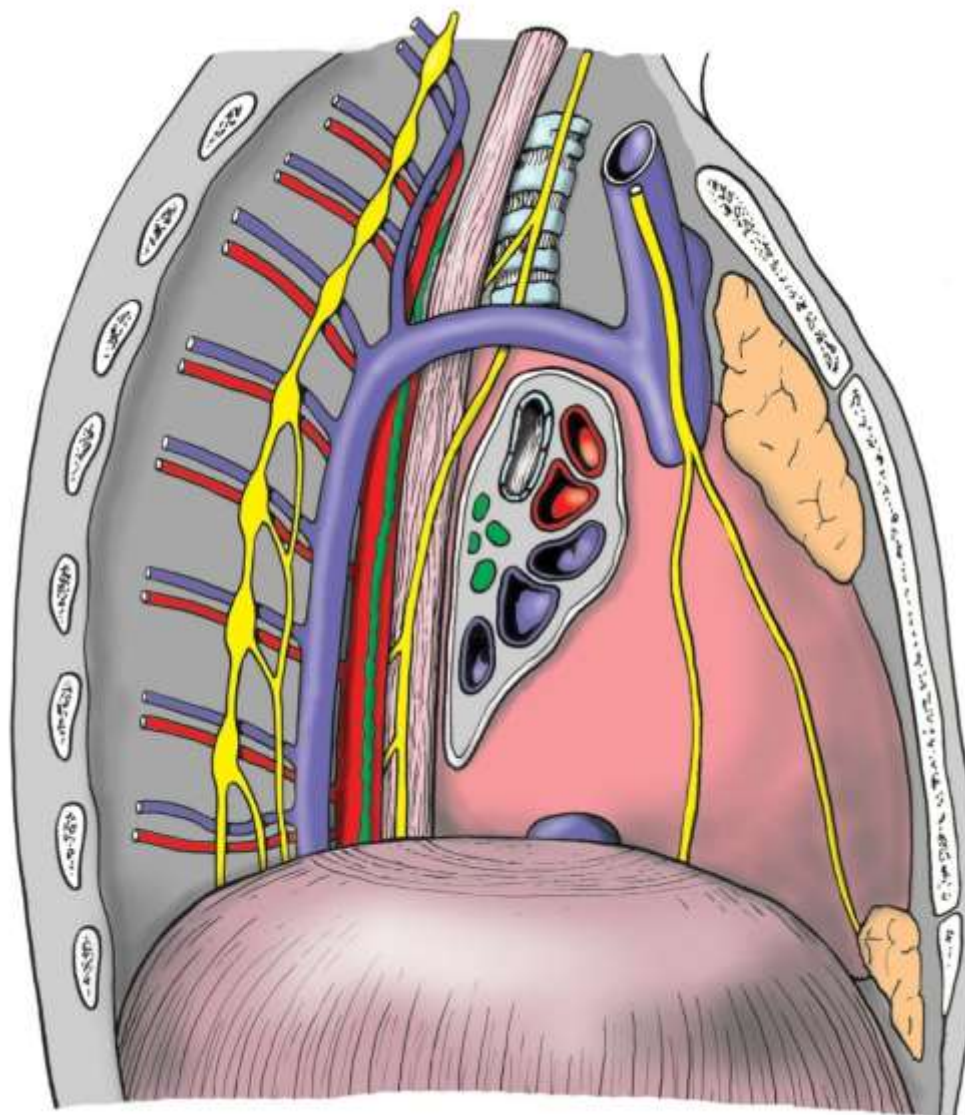
! n. vagus za hilem



Mediastinu kryté pleurou



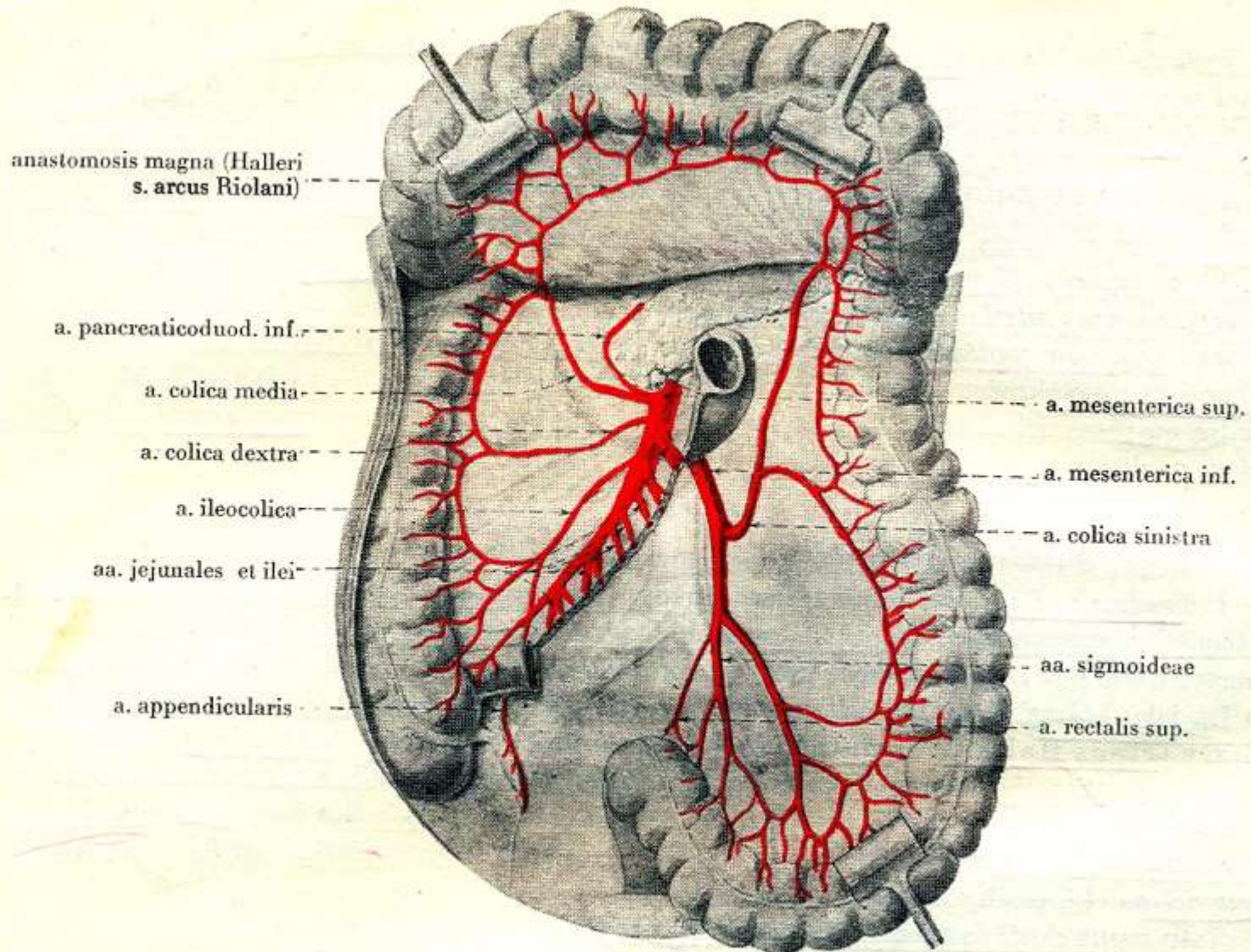
Mediastinum zprava



Břicho, pánev

- **B/P:** Vyhledání (na řez) útvarů v *levém a pravém srůstovém poli (ureter, vasa spermatica, vasa colica.....)*.

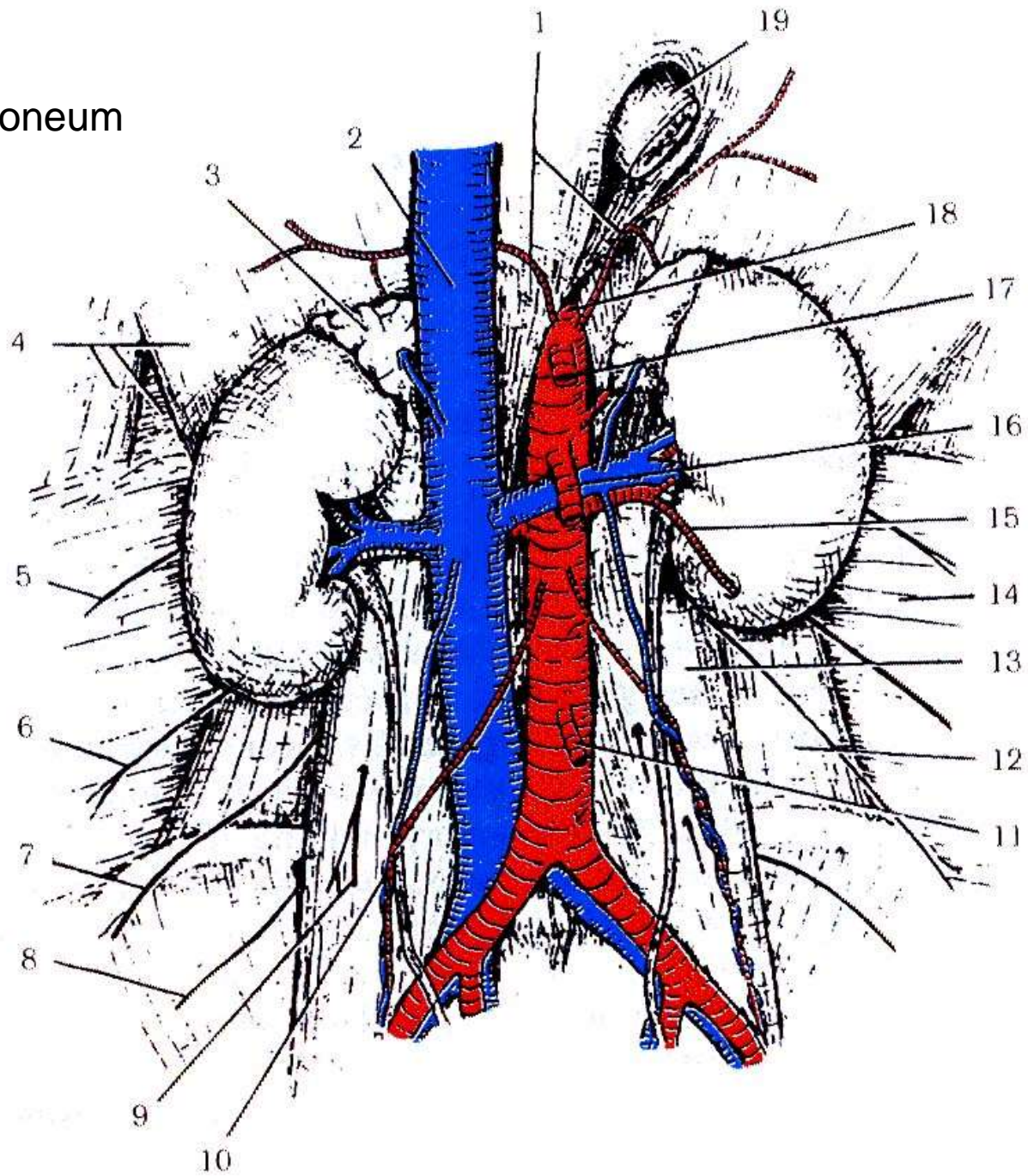
Aa. mesentericae



Obr. 468.

Arteriae mesentericae.

Retroperitoneum



Retroperitoneum

aa.phrenicae inf

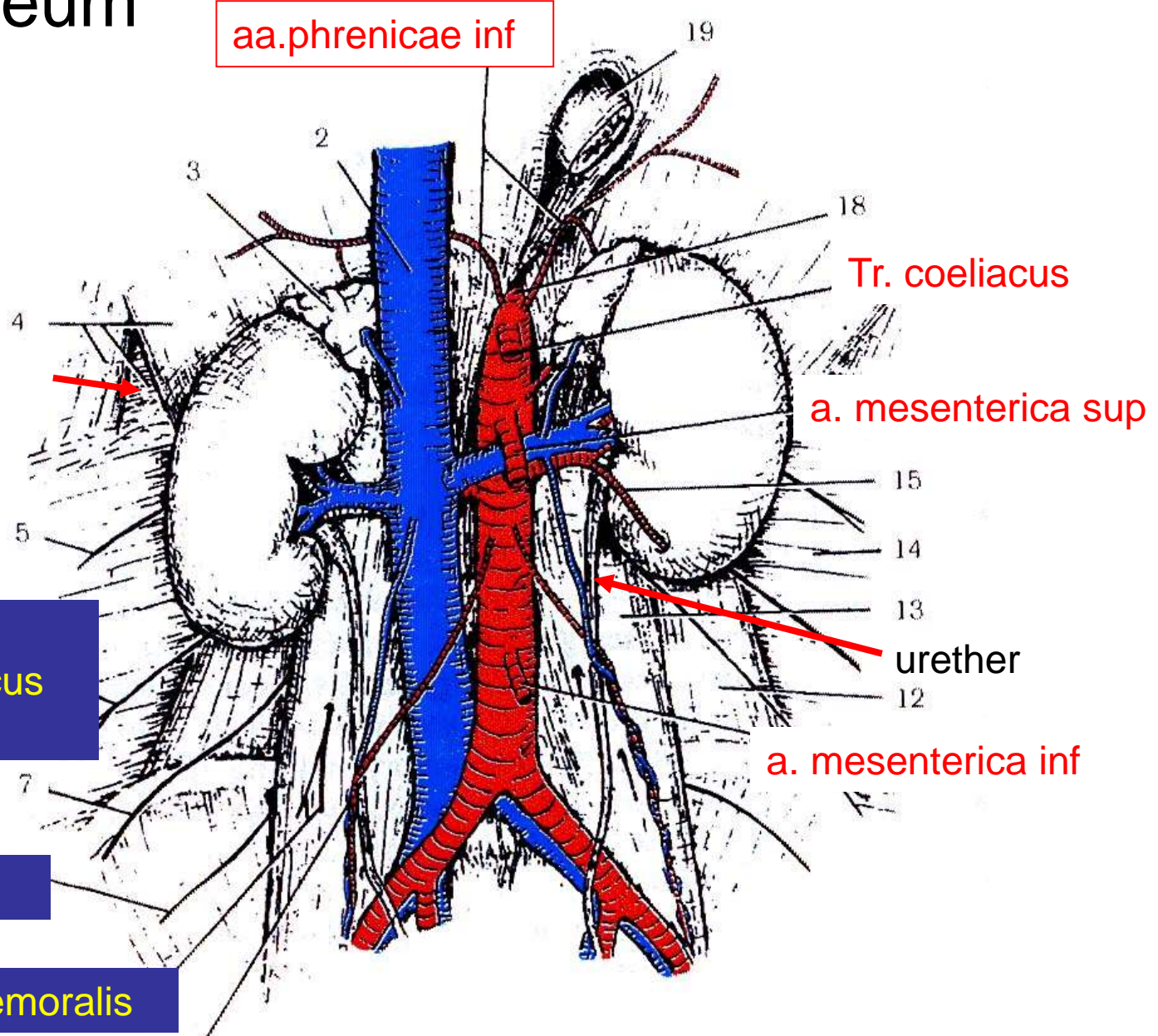
trigonum lumbocostale

n.subcostalis
n.iliohypogastricus
n.ilioinguinalis

n.cutaneus femoris lat

n.genitofemoralis

vasa spermatica



Tr. coeliacus

a. mesenterica sup

urether

a. mesenterica inf

Retroperitoneum

