

Ossification Pattern in Forelimbs of the Siamese Crocodile (*Crocodylus siamensis*): Similarity in Ontogeny of Carpus Among Crocodylian Species

MARTINA GREGOROVIČOVÁ ^{1,2} ALENA KVASILOVÁ ²
AND DAVID SEDMERA ^{1,2*}

¹Institute of Physiology, Department of Developmental Cardiology, The Czech Academy of Sciences, Vídeňská 1083, Praha 4, 142 20, Czech Republic

²Institute of Anatomy, First Faculty of Medicine, Charles University, U nemocnice 3, Praha 2, 128 00, Czech Republic

ABSTRACT

Crocodylians have highly derived elongated carpus, which is related to their use of forelimbs in many types of gaits as well as in burrowing. The objective of present study was to describe the ossification of the forelimb in five stages of Siamese crocodile (*Crocodylus siamensis*). The ossification begins approximately at stage 20 in arm and forearm bones moving sequentially to the metacarpal elements. The first carpal elements with ossification centers are radiale + intermedium and ulnare (stage 22–23), and their ossification mode is typical of long bones. Between stages 22 and 24 distal carpals 3, 4, and 5 fuse together to a single formation. In the stage 25, the ossification proceeds to the pisiform, which starts ossifying late during the embryogenesis. The phalangeal formula of the digits is 2,3,4,5,3. Although there are some interspecific differences, it appears that all crocodylians have similarly uniform skeletal pattern, the process of ossification, number of carpal elements and phalangeal formulas probably due to their similar lifestyles. Anat Rec, 00:000–000, 2018. © 2018 Wiley Periodicals, Inc.

Key words: embryo; hand; limb development; morphology; skeleton

The forelimbs in tetrapods all share common features of structure, organization, and function (Rieppel, 1993a; Hinchliffe, 2002; Kardong, 2012). However, each animal species has differences in body type, locomotion or arrangement of structure. The individual roles and positions of the bones reflect also the habitat where the animal lives, and the types of gait, which it uses. Biomechanics of quadrupedal walking has broadly similar features (Griffin et al., 2004). Hence, it is necessary to study also the ontogeny of the limb, because the tetrapod limb “Bauplan” is homologous (Rieppel, 1993a; Kardong, 2012). However, this “Bauplan” is also dynamic and not rigidly fixed (Hinchliffe, 2002).

Grant sponsor: Czech Science Foundation; Grant number: 16-02972S; Grant sponsor: Ministry of Education, Youth and Sports of the Czech Republic; Grant number: PROGRES-Q38; Grant sponsor: Czech Academy of Sciences; Grant number: RVO: 67985823

*Correspondence to: David Sedmera, Institute of Anatomy, First Faculty of Medicine, Charles University, U nemocnice 3, Praha 2, 128 00, Czech Republic. Tel.: +420-224-965-941. E-mail: david.sedmera@fl.cuni.cz

Received 29 April 2017; Revised 16 September 2017; Accepted 4 October 2017.

DOI 10.1002/ar.23792
Published online 00 Month 2018 in Wiley Online Library (wileyonlinelibrary.com).

The archosaurian forelimb presents probably the most diverse structure in tetrapod body (Meers, 2003). Living archosaurs cover two clades—avians and crocodylians (Nesbitt et al., 2013; Xu et al., 2014; Nesbitt et al., 2017). Both clades have a very modified carpus, homology of which is still hotly debated (Xu and Mackem, 2013). Avian carpus may be considered as a product of flight adaptation (Xu et al., 2014) but question is why extant crocodylians have reduced carpus. It could be linked to an ancestral plasticity in archosaurs, which involves a potential natural selection of typical pattern as well as a diversity of secondary adaptations. These adaptations, as flight in birds, could cover various types of gaits and also burrowing in extant crocodylians, which are unique in the number of gaits among all sauropsids.

Development of the crocodylian carpus has been the object of interest for more than one century (Kükenthal, 1893; Holmgren, 1933; Müller and Alberch, 1990; Rieppel, 1993b; Buscalioni et al., 1997; Lima et al., 2011; Vieira et al., 2016). The unique feature of the crocodylian carpus is its highly derived status (Müller and Alberch, 1990; Rieppel, 1993b; Lima et al., 2011; Vieira et al., 2016). Its reductions are unique among sauropsids and have not been observed even in turtles, sister group of archosaurs (Zardoya and Meyer, 1998; Lyson et al., 2010; Chiari et al., 2012). The carpus of the alligator consists of three proximal and four distal carpal elements (Müller and Alberch, 1990). In carpus of *Caiman yacare* only four elements—radiale, ulnare, pisiform, and distal carpal 4 + 5—are ossified (Lima et al., 2011). In *Melanosuchus niger* even the distal carpals 3 + 4 + 5 fuse together and ossify with one ossification center (Vieira et al., 2016). However, in the hand of *Melanosuchus niger* are still four elements ossifying according to sequence described for *Caiman yacare* (Lima et al., 2011; Vieira et al., 2016). Similarly, in the adult hand of *Alligator mississippiensis* there are four ossified elements present and the rest are cartilaginous (Müller and Alberch, 1990). Therefore, it appears that chondrogenesis as well as the ossification processes have similarly uniform pattern among crocodylian species. Of note, the crocodylian forelimb exhibits a higher number of the digits (five) compared to the webfooted hindlimb (four). Only the first three digits have claws in both forelimb and hindlimb, which is typical for all crocodylians (Grigg and Kirshner, 2015).

The objective of the study was to describe the pattern of ossification in crocodylian carpus and discuss the results with recent knowledge. For our examination we used a unique source of eggs from an established breeding pair of Siamese crocodile (*Crocodylus siamensis*) held in captivity (Crocodile Zoo Protivin, Czech Republic, www.krokodylizoo.cz) as a species of true crocodile from family Crocodylidae (Oaks, 2011). Although the ontogeny of the limbs in crocodylians is fairly well described (e.g., in alligator or black caiman), there are still several open questions about the exact process of ossification in other species from family Crocodylidae, specifically: (i) when the ossification of the hand elements begins, (ii) what is the appearance of ossification, and (iii) the specific phalangeal formula.

MATERIAL AND METHODS

Fertilized surplus eggs of Siamese crocodile (*Crocodylus siamensis*) were obtained from The Crocodile Zoo

Protivín between years 2013 and 2014. Eggs were opened at weekly intervals. Series of six embryos at age 21–54 dpo [days post oviposition; stages 16–25 (Ferguson, 1985)] was obtained. Normal incubation period in *Crocodylus siamensis* is around 68–80 days between temperature 28° and 33°C. Eggs were incubated without rotation at 33° ± 1°C, which usually results in hatching at 68 days (Lang and Andrews, 1994). According to the Czech law, studies on embryos still contained in the eggs are exempt from approval of the Institutional Animal Care and Use Committee. Whole embryos after removal from the eggs were photographed for the record using a Nikon D7000 DSLR camera. After 48 hr fixation in 4% paraformaldehyde in phosphate buffer saline, isolated forelimbs were skinned if possible and subjected to whole mount Alcian Blue—Alizarin Red staining (Potthoff, 1984). After clearing in 1% KOH and glycerol, photos of the limbs were taken using an Olympus BX51 and Olympus SZX12 microscope fitted with an Olympus DP71 and DP50 CCD camera, respectively. The images were assembled and labeled in Adobe Photoshop (Adobe Systems, Palo Alto, CA).

RESULTS

Stage 16 (21 dpo)

At stage 16 (Fig. 1A) chondrogenetic condensations of the long bones (humerus, ulna, and radius) were present as well as the mesenchymal condensations of the radiale + intermedium, ulnare, distal carpal 4 and metacarpals III and IV. The digital arch between digits II and III was clearly visible (Fig. 1B).

Stage 20 (30 dpo)

The centers of ossification were present in the long bones—humerus, ulna, and radius (Fig. 2A). Polydactyly—bifurcation of the distal phalanx of the thumb (digit I) was present in one specimen. The following elements were observed in the carpus: radiale + intermedium, ulnare, pisiform, and centrale. The distal carpal 4 and 5 were still distinct but very close to each other.

Stage 22 (46 dpo)

Centers of ossification appeared in the metacarpals I–III. Digits I–III were unguis (possessed claws). The distal carpals 4 and 5 fused together as distal carpal 4 + 5 (Fig. 2B).

Stage 22–23 (54 dpo)

Ossification continued in the humerus, ulna, and radius, as well as in the metacarpals I–III. The centers of ossification newly appeared in metacarpals IV–V and in the digits. The centers of ossification were visible also in the largest carpal elements, radiale + intermedium and ulnare (Fig. 2C). Phalangeal ossification pattern was the following: digit I: 1, 2 (centers of ossification appeared); digit II: 1, 2, 3 (centers of ossification appeared); digit III: 1, 2, 3, 4 (centers of ossification appeared); digit IV: 1, 2 (centers of ossification appeared), 3, 4, 5 (cartilaginous); digit V: 1 (center of ossification appeared), 2, 3 (cartilaginous).

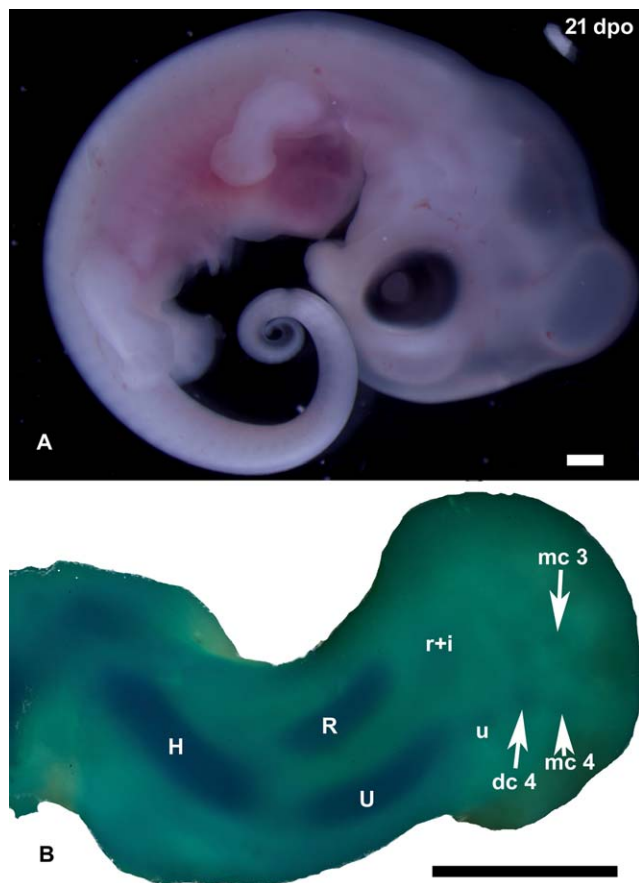


Fig. 1. **A.** Right lateral view of the embryo of *Crocodylus siamensis* in stage 16 (the youngest stage analyzed). Scale bar = 1 mm. **B.** Pattern of chondrogenesis in stage 16 of *Crocodylus siamensis*: dc 4—distal carpal 4, H—humerus, mc 3—metacarpal 3, mc 4—metacarpal 4, R—radius, r+i—radiale + intermedium, U—ulna, u—ulnare. Scale bar = 1 mm.

Stage 24 (42 dpo)

Ossification progressed in the long bones of the stylopod and zeugopod as well as in the metacarpals (I–IV). Ossification started in the metacarpal V. The centers of ossification in the radiale and ulnare were now clearly distinguishable. Ossification pattern of the radiale and ulnare was similar to the ossification of the long bones—diaphyseal centers of ossification were located in the middle part of the bone (Fig. 2D,E; Fig. 3). The fused distal carpals 3 + 4 + 5 were clearly visible as a single formation. The pattern of phalangeal ossification was the following: digit I: 1 (beginning of ossification), 2 (center of ossification appeared); digit II: 1 (beginning of ossification), 2, 3 (centers of ossification appeared); digit III: 1 (beginning of ossification), 2, 3, 4 (centers of ossification appeared), digit IV: 1, 2 (centers of ossification appeared), 3, 4, 5 (cartilaginous); digit V: 1, (center of ossification appeared), 2, 3 (cartilaginous).

Stage 25 (54 dpo)

Ossification of the metacarpals, digits, radiale + intermedium, and ulnare further progressed. The

center of ossification appeared in the pisiform (Fig. 2F). At this stage, the centrale and distal carpals were poorly distinguishable. The phalangeal formula for the hand was 2,3,4,5,3. Ossification of the phalanges had the following pattern: digit I: 1, 2, (ungual, ossification in progress); digit II: 1, 2, 3 (ungual, ossification in progress); digit III: 1, 2, 3, 4 (ungual, phalanx 4—beginning of ossification); digit IV: 1, 2 (centers of ossification appeared), 3, 4, 5 (cartilaginous); digit V: 1 (beginning of ossification), 2 (center of ossification appeared), 3 (cartilaginous).

Comparison of ossification pattern in the forelimb among stages is summarized in a schematic diagram (Fig. 4).

DISCUSSION

Carpal structure could be linked to functional abilities (Fontanarrosa and Abdala, 2014). Among living sauropsids there are particularly two clades—avians and crocodylians, which possess greatly derived carpus. The number of skeletal elements is highly reduced in both clades. The reason why is still questionable in avians (Xu and Mackem, 2013) as well as in crocodylians (this work). However, it seems that in extant crocodylians both chondrogenesis (Müller and Alberch, 1990) as well as ossification (Rieppel, 1993b; Lima et al., 2011; Vieira et al., 2016) have the similar patterns.

Ontogenesis of the Forelimb in Extant Crocodylians

Ontogenesis of the forelimb in extant crocodylians has typical similar features for all species examined (Müller and Alberch, 1990; Rieppel, 1993b; Lima et al., 2011; Vieira et al., 2016), and this work. In *Alligator mississippiensis*, *Melanosuchus niger*, and *Crocodylus siamensis* a characteristic digital arch is present in embryos around age 20 dpo [(Müller and Alberch, 1990; Vieira et al., 2016); this work]. From this digital arch distal carpals 2 and 3 arise (Müller and Alberch, 1990). In more advanced embryos—around stage 20 (30 dpo) in *A. mississippiensis* and *C. siamensis*, and stage 12 (26 dpo) in *M. niger*, most of the carpal elements are present in the cartilaginous form (Müller and Alberch, 1990; Vieira et al., 2016).

Ossification of the Carpus in Crocodylians

Ossification of the carpus has similarities among all extant crocodylians. In *Crocodylus siamensis* ossification starts in stage 20, when most of the carpal elements are present as cartilaginous anlagen. The first centers of ossification appear in the humerus, ulna, radius, and in the metacarpals I–III. The ossification then moves to the phalanges of digits and the centers also appear in the carpal elements—radiale + intermedium and ulnare (stage 22–23), which ossify as typical long bones—from the diaphysis in the middle part of the bones similar to radius and ulna (Reno et al., 2007; Romão et al., 2012; Drake et al., 2014). Such ossification pattern is highly unique among vertebrates. In stage 24 (Fig. 3) distal carpals 3 + 4 + 5 fuse and they are clearly visible as a single structure similar to stage 15 in *Melanosuchus niger* (Vieira et al., 2016). In stage 25, the center of

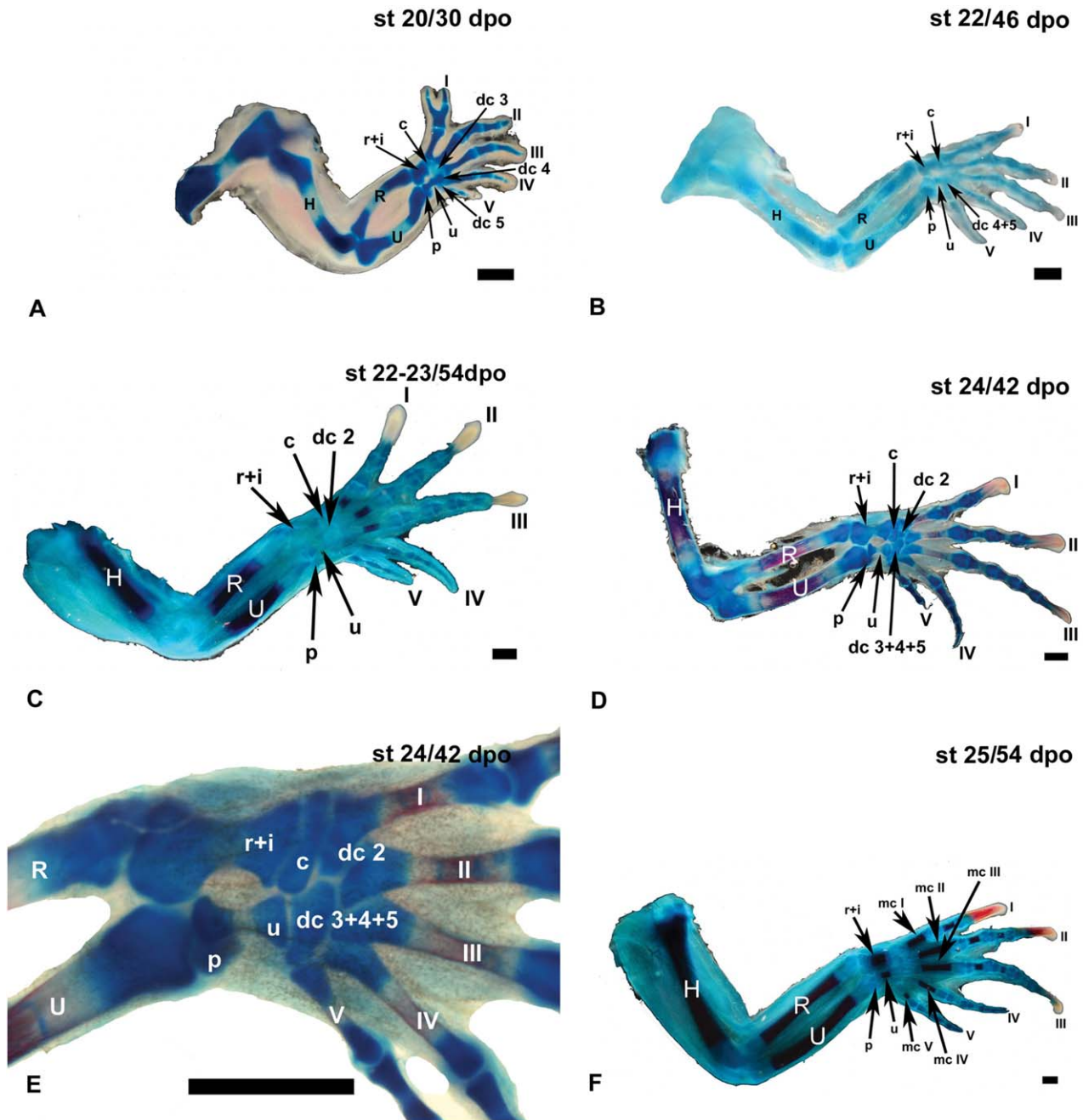


Fig. 2. Pattern of ossification of the forelimbs of *Crocodylus siamensis* embryos, dorsal views: (A) stage 20, (B) stage 22, (C) stage 22–23, (D) stage 24, (E) detail of the carpus in stage 24, (F) stage 25. Abbreviations: H—humerus, I–V—digits, c—centrale, dc 2—distal carpal 2, dc 3+4+5—distal carpal 3+4+5, H—humerus, mc I–V—metacarpals I–V, p—pisiform, R—radius, r+i—radiale+intermedium, U—ulna, u—ulnare. Scale bars = 1 mm. Note the polydactyly in stage 20. Digits I–III bear claws (visible from stage 22). Figure 2D note missing phalanges 2 and 3 in digit V. Bone labels are positioned over the ossification centers, wherever possible.

ossification arises already in the last element of the carpus—the pisiform. Ossification of the distal carpal 3+4+5 is supposed to start after the beginning of ossification in the pisiform, as was described for the *Caiman yacare* (Lima et al., 2011; Vieira et al., 2016). The rest of distal carpals and centrale should be cartilaginous (Müller and Alberch, 1990). Generally, ossification starts earlier in metacarpals than in the carpus itself similarly

to *Alligator mississippiensis* (Rieppel, 1993b), *Caiman yacare* (Lima et al., 2011), and *Melanosuchus niger* (Vieira et al., 2016). After stage 25, ossification occurs in the entire carpus as well as in all the digits and long bones and continues until the adulthood. The dominant digits are I–III. These digits (I–III) start to ossify earlier than the remaining ones and they also bear claws typical for all crocodylians (Müller and Alberch, 1990;



Fig. 3. Foetus of *Crocodylus siamensis* in stage 24 (42 dpo). Note the claws on digits I–III in both forelimbs and hindlimbs.

Rieppel, 1993b; Lima et al., 2011; Grigg and Kirshner, 2015; Vieira et al., 2016). Phalangeal formula of *Crocodylus siamensis* is 2,3,4,5,3. In *Crocodylus palustris* we found the same phalangeal formula as we describe here for *C. siamensis*—2,3,4,5,3 (M. Gregorovicova, unpubl. data, 2015), which could be due to the fact that *C. siamensis* and *C. palustris* are probably sister species (Man et al., 2011; Oaks, 2011). Phalangeal formula was established in the hand early in reptilian evolution, and it has strong tendency for the persistence of its primitiveness form—2,3,4,5,3. This count is adhered to in many later types, even in the varied specialization/reduction in the hand (Romer, 1956). However, in phalangeal formulas the crocodylian species can differ from each other as was shown for *Caiman yacare*—2,3,4,3,2 (Lima et al., 2011)—similar to the formula of *Melanosuchus niger*—2,3,4,4,2 (Vieira et al., 2016)—probably due to their relatively close relationship (Hrbek et al., 2008; Grigg and Kirshner, 2015). In *Alligator mississippiensis* the phalangeal formula is also slightly different—2,3,4,5,4 (Müller and Alberch, 1990).

Carpal Region of the Sauropsids

Comparison with extinct crocodylians. In archosaurs the limbs have tendency for reduction in ossification of limb bone ends, carpus, or tarsus (Romer, 1956). This is frequently found in known aquatic species. There is also a great trend toward an aquatic life, where the major structures may be strongly affected. The group Metriorhynchidae from the Jurassic can serve as an example of reduction in carpal region. Metriorhynchids were thallosuchian, the most extremely adapted marine group of archosaurians (Wilberg, 2015).

They had a specialized paddle-like forelimbs with the loss of the pisiform, centrale and intermedium (Romer, 1956; Young et al., 2010). Radiale and ulnare were secondarily reduced in length and the metacarpal I was expanded (Romer, 1956).

The taxa closer to Crocodyliformes had more compact carpal region and metapodials and it seems that they were digitigrade in both fore and hind limbs (Irmis et al., 2013). This type of carpus was described also in the extinct genus *Protosuchus* (Mook, 1951), which was terrestrial (Grigg and Kirshner, 2015). Genus *Protosuchus* is an early crocodyliform (Pol et al., 2013) and eusuchian crocodiles as the surviving crocodiles are all within this clade (Serenio et al., 2001; Grigg and Kirshner, 2015).

Although it seems that the number of distal carpals is invariant since the group arose during the Upper Triassic (Romer, 1956), there could be found differences among fossil finds (Romer, 1956; Buscalioni et al., 1997) and embryonic development of extant crocodylians (Müller and Alberch, 1990; Lima et al., 2011; Vieira et al., 2016). As an example serves the presence of pisiform, which is absent in some fossils but it arises in extant crocodylian embryos.

Comparison with modern birds. The extant crocodylians are closely related to the avians and together are the only surviving archosaurs (Nesbitt et al., 2013, 2017). The bird hand is investigated with great interest. Although there is probably pentadactyl ground state of hand in modern birds (Kundrát et al., 2002; Larsson and Wagner, 2002) similarly to the crocodylians (Larsson et al., 2010), there are still open questions about avian carpal region (Kundrát, 2009; Botelho et al., 2014). The avians have highly reduced carpal region fused as carpometacarpus in the adulthood (Vazquez, 1992). Avian wrist has reductions in the number of ossifications (Botelho et al., 2014). It seems that typical features in avian embryonic development are radiale + intermedium as a single ossification, reappearance of the pisiform, and loss of ulnare (Botelho et al., 2014), which is in contrast well developed in crocodylians (Müller and Alberch, 1990; Rieppel, 1993b; Lima et al., 2011; Vieira et al., 2016). The avian pisiform has the same embryonic origin as in other reptiles (Botelho et al., 2014) and it is involved in locomotion (Haines, 1946). In birds the pisiform is widely used for flight (Vazquez, 1992). Another feature, which the avian embryos share with crocodylians, is radiale + intermedium single ossification (Rieppel, 1993b; Lima et al., 2011; Botelho et al., 2014; Vieira et al., 2016).

Comparison with turtles. It comes then as no surprise that crocodylians share similar features in the structure of the carpus, which is significantly different from other clades including turtles, a sister group of archosaurs (Zardoya and Meyer, 1998; Lyson et al., 2010; Chiari et al., 2012). Turtles have more plesiomorphic limbs with more carpal elements than crocodylians (Burke and Alberch, 1985; Sheil, 2003, 2005; Sheil and Greenbaum, 2005; Hitschfeld et al., 2008; Sheil and Portik, 2008). The ossification of the hand in turtles starts first in the metacarpal elements (Sheil and Portik, 2008) similarly to crocodylians (Rieppel, 1993b; Lima et al.,

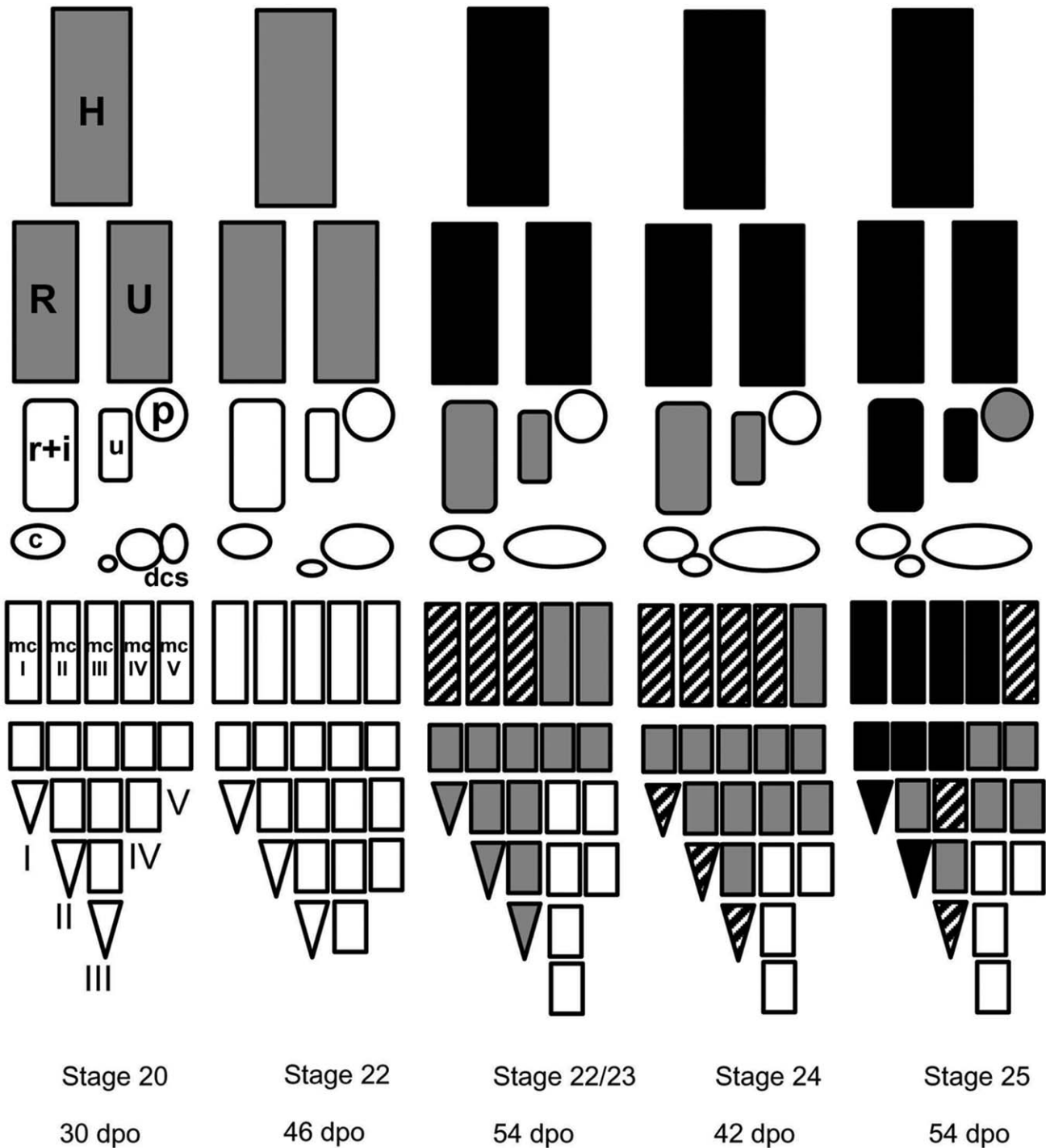


Fig. 4. Schematic diagram comparing the ossification process in forelimb of *Crocodylus siamensis* embryos. Abbreviations: c—centrale, dcs—distal carpals, H—humerus, mc I–V—metacarpals I–V, p—pisiform, R—radius, r+i—radiale + intermedium, U—ulna, u—ulnare. Roman numerals indicate digit numbers. Degree of ossification (cartilage only with no ossification, weak with initiation of ossification, weak retention of red stain, strong retention of stain) is indicated by white < gray < diagonal white hashing on black background < black.

2011; Vieira et al., 2016). However, the dominant digits in turtles are II–IV (Sheil and Portik, 2008) differing slightly from those in crocodylians (I–III). Ossification of the carpal elements (such as ulnare, intermedia etc.) was not observed in prehatchling specimens of

Trachemys but in *Apalone*, slight ossification of these elements was observed (Sheil and Portik, 2008). However, the ossification of the carpal elements before hatching is a constant observation for extant crocodylians (Rieppel, 1993b; Lima et al., 2011; Vieira et al., 2016).

The reason for reinforced carpus lies probably in the burrowing lifestyle in e.g., *Testudo horsfieldii* or exposed walking lifestyle typical for e.g., *Testudo hermanni* (Hitschfeld et al., 2008). In turtles (such as in *Apalone*) the reinforced carpus is not necessary in contrast to tortoises (*Testudo*), because the majority of the turtles are swimmers. However, locomotion among turtles differs substantially (Pace et al., 2001). It is possible that the reinforced unique carpus of the crocodylians is related to their posture on the land and in the number of gaits coupled with their significant weight.

Comparison with lepidosauria. In comparison to Lepidosauria, the differences in carpal bones are less pronounced among crocodylians (Abdala et al., 1997; Shapiro, 2002; Fabrezi et al., 2007; Leal et al., 2010; Diaz and Trainor, 2015). The other feature distinguishing the lepidosaurian carpus from the crocodylians is the frequent presence of the sesamoids (Fabrezi et al., 2007), which was also observed in non-squamate lepidosaurian *Sphenodon punctatus* (Regnault et al., 2017). It is therefore relatively complicated to compare the crocodylian carpus and the carpus of Lepidosauria. Several features, however, could be compared between crocodylian and squamate carpal region. The ossification starts in metacarpals (Rieppel, 1994; Abdala et al., 1997; Fabrezi et al., 2007) earlier than in the rest of the hand as was observed in crocodylians. However, there is no or very weak ossification in carpus itself before hatching in many squamates (Fabrezi et al., 2007) thus differing from crocodylians (Lima et al., 2011; Vieira et al., 2016; this work). In squamates as well as in crocodylians there is a strong dominant position of the digit III (Rieppel, 1993b, 1994). Last but not least, the crocodylians share with the squamates one significant feature—development of a distinct and single radiale condensation (Fabrezi et al., 2007). When comparing *Sphenodon* (tuatara), the only surviving taxon of order Sphenodontia (Rest et al., 2003; Cree, 2014), and crocodylian carpal region there can be found the differences not only in the presence of sesamoids in tuatara but also in number and character of centrale. *Sphenodon* possesses two ossified centralia (Carroll, 1988), whereas centrale in extant crocodylians should be a single cartilaginous structure (Müller and Alberch, 1990).

Functional Morphology of the Limbs in Extant Crocodylians—Gaits and Burrowing

Extant crocodylians are also unique in posture and in the number of types of gait among all reptiles (Zug, 1974; Gatesy, 1991; Hutchinson, 2006; Allen et al., 2010; Cott, 2010). While they are on land, crocodylians have a wide variety of gaits, thanks to their specific semierect posture for better terrestrial mobility (Reilly and Elias, 1998; Hutchinson, 2006; Grigg and Kirshner, 2015). The crocodylian-specific gaits are sprawling walk, high walk, and galloping (Zug, 1974; Gatesy, 1991; Renous et al., 2002; Cott, 2010; Grigg and Kirshner, 2015). Sprawling walk is used as a quick escape downslope to the water, when the toes grip the substrate as the crocodile pulls the body along (Grigg and Kirshner, 2015). High walk is the normal gait on land and it is a symmetrical walking with at least two feet on the ground in semierect posture (Willey et al., 2004). The majority of the weight is on the

hindlimbs (Gatesy, 1991; Reilly and Elias, 1998; Willey et al., 2004), but the crocodile has to support the hindlimbs by strong wrists in order to run. In such run-galloping, which is the fastest gait, forelimbs strike the ground first, whereas hindlimbs are in the air (Zug, 1974; Renous et al., 2002). Therefore, it is convenient to have reinforced carpus to avoid breaking the wrist. Stabilization of the carpus by reducing the number of bones as well as strengthening the bones by modifying them to the type of the long bones could reinforce the carpal region for physically and mechanically demanding activities such as running in case of a heavy reptile such as crocodile. Note that in high walk and galloping the tail is a dead weight on the land (Willey et al., 2004). Moreover, the semierect posture is probably an adoption from the earliest crocodylians—crocodylomorphs (Parrish, 1987) and this implication points to the fact that extant crocodylians are secondarily aquatic. Of note, the most aquatic extant crocodylian is gharial (*Gavialis gangeticus*) (Grigg and Kirshner, 2015). Although gharial has pentadactyl forelimb like the other crocodylians (Grigg and Kirshner, 2015), this species is unable to perform high walk or galloping when it reaches the adulthood (Milàn and Hedegaard, 2010; Grigg and Kirshner, 2015). However, little is known about its embryonical development and skeletogenesis due to its rarity. On the other hand, the reason why gharial cannot perform high-walking or galloping in adulthood could be linked not primarily to the hand skeleton structure itself but rather to the loss of bracing system. There is a difference in the configuration of paravertebral shield and the length of the lateral epaxial muscles in the cranial half of the tail between gharial and the other living crocodylians. This “configuration” is less diverse in gharials. Adult gharials also cannot flex the head ventrally against the neck in degree observed in other taxa (Salisbury and Frey, 2000, 2004).

Burrowing is another physically demanding activity, where the carpus may play a role. Burrowing is listed for 16 species of extant crocodylians including gharials, which also can make hole nests in the dirt or sand (Trutnau and Sommerlad, 2006; Grigg and Kirshner, 2015). Many species are skilled burrowers such as mugger crocodile (*Crocodylus palustris*), West African crocodile (*Crocodylus suchus*), or alligators (*Alligator mississippiensis*, *Alligator sinensis*), all well known for their ability to hide themselves in the self-made burrows in order to endure the unfavorable seasons (Trutnau and Sommerlad, 2006; Grigg and Kirshner, 2015).

Anomalies

Polydactyly of the terminal phalanx of the thumb (digit I) and also preaxial polydactyly of the hindlimbs (8 digits per limb, not shown) was observed in one embryo out of thirteen specimens at stage 20 (30 dp). Malformations such as polydactyly, absence of digits or syndactyly are known to occur sporadically in crocodylians (Giles, 1948; Ferguson, 1985), especially if breeding females are too young or too old (Ferguson, 1985). Although the occurrence of polydactyly was described in sauropsids (Martínez-Silvestre et al., 1997; Bauer et al., 2009; Kaliontzopoulou et al., 2013), it is not as widely reported as in case of mammals (Chase, 1951; Dunaway, 1969; Pugsley, 1985; Galis et al., 2001; Chapman, 2006;

Gugolek et al., 2011), especially in marine mammals (Sedmera et al., 1997; Ortega-Ortiz et al., 2000), or amphibians (Bishop, 1947; Cooper, 1958; Lada, 1999; Vorobyeva, 1999; Machado et al., 2010).

CONCLUSION

Development of the hand in the Siamese crocodile (*Crocodylus siamensis*) is alike to hand development in extant crocodylians—alligator (Müller and Alberch, 1990; Rieppel, 1993b) as well as in caimans (Lima et al., 2011; Vieira et al., 2016), however the differences could be found between the fossil finds of *Crocodylomorpha* and extant crocodylians (Romer, 1956). In comparison with avians, the carpal region of both clades (avians and crocodylians) is dramatically reduced with similar characteristics (Rieppel, 1993b; Kundrát, 2009; Botelho et al., 2014; Vieira et al., 2016) probably due to their specific functional purposes. The carpus is highly reduced also when compared to turtles (Burke and Alberch, 1985; Sheil and Portik, 2008; Fabrezi et al., 2009) and Lepidosauria (Carroll, 1988; Shapiro, 2002; Fabrezi et al., 2007; Leal et al., 2010; Diaz and Trainor, 2015; Regnault et al., 2017).

ACKNOWLEDGEMENTS

The authors thank the Crocodile Zoo Protivín, namely Miroslav Procházka, for permission to obtain the eggs, Paul E. Mozdiak for providing useful comments, and Ms. Jarmila Svatůňková and Marie Jindraková for their excellent technical assistance.

LITERATURE CITED

- Abdala F, Lobo F, Scrocchi G. 1997. Patterns of ossification in the skeleton of *Liolaemus quilmes* (Iguania: Tropiduridae). *Amphibia-Reptilia* 18:75–83.
- Allen V, Elsey RM, Jones N, Wright J, Hutchinson JR. 2010. Functional specialization and ontogenetic scaling of limb anatomy in *Alligator mississippiensis*. *J Anat* 216:423–445.
- Bauer AM, Hathaway SA, Fisher RN. 2009. Polydactyly in the central pacific gecko, *Lepidodactylus* sp. (Squamata: Gekkonidae). *Amphibia-Reptilia* 2:243–246.
- Bishop DW. 1947. Polydactyly in the tiger salamander. *J Heredity* 38:291–293.
- Botelho JF, Ossa-Fuentes L, Soto-Acuña S, Smith-Paredes D, Nuñez-León D, Salinas-Saavedra M, Ruiz-Flores M, Vargas AO. 2014. New developmental evidence clarifies the evolution of wrist bones in the dinosaur–bird transition. *PLoS Biol* 12:e1001957.
- Burke AC, Alberch P. 1985. The development and homology of the chelonian carpus and tarsus. *J Morphol* 186:119–131.
- Buscalioni AD, Ortega F, Rasskin-Gutman D, Pérez-Moreno BP. 1997. Loss of carpal elements in crocodylian limb evolution: Morphogenetic model corroborated by palaeobiological data. *Biol J Linn Soc* 62:133–144.
- Carroll RL. 1988. *Vertebrate paleontology and evolution*. New York: W. H. Freeman and Company.
- Chapman NG. 2006. Polydactyly in roe deer (*Capreolus capreolus*). *Eur J Wildlife Res* 52:142–144.
- Chase HB. 1951. Inheritance of polydactyly in the mouse. *Genetics* 36:697–710.
- Chiari Y, Cahais V, Galtier N, Delsuc F. 2012. Phylogenomic analyses support the position of turtles as the sister group of birds and crocodyles (Archosauria). *BMC Biol* 10:65.
- Cooper JE. 1958. Some albino reptiles and polydactylous frogs. *Herpetologica* 14:54–56.
- Cott HB. 2010. Scientific results of an inquiry into the ecology and economic status of the Nile crocodile (*Crocodylus niloticus*) in Uganda and Northern Rhodesia. *Trans Zool Soc Lond* 29:211–356.
- Cree A. 2014. *Tuatara: Biology and conservation of a venerable survivor*. New Zealand: Canterbury University Press.
- Diaz RE, Trainor PA. 2015. Hand/foot splitting and the “re-evolution” of mesopodial skeletal elements during the evolution and radiation of chameleons. *BMC Evol Biol* 15:184.
- Drake R, Vogl AW, Mitchell AW. 2014. *Gray’s anatomy for students*. Churchill Livingstone: Elsevier Health Sciences.
- Dunaway PB. 1969. “Perfect” polydactylism in hind feet of a gray squirrel. *Am Midland Nat* 81:244–247.
- Fabrezi M, Abdala V, Oliver MIM. 2007. Developmental basis of limb homology in lizards. *Anat Rec* 290:900–912.
- Fabrezi M, Manzano A, Abdala V, Zaher H. 2009. Developmental basis of limb homology in Pleurodiran turtles, and the identity of the hooked element in the chelonian tarsus. *Zool J Linn Soc-Lond* 155:845–866.
- Ferguson MWJ. 1985. Reproductive biology and embryology of the crocodylians. *Biol Reptilia* 14:329–491.
- Fontanarrosa G, Abdala V. 2014. Anatomical analysis of the lizard carpal bones in the terms of skilled manual abilities. *Acta Zool-Stockholm* 95:249–263.
- Galis F, van Alphen JJM, Metz JAJ. 2001. Why five fingers? Evolutionary constraints on digit numbers. *Trends Ecol Evol* 16:637–646.
- Gatesy SM. 1991. Hind limb movements of the American alligator (*Alligator mississippiensis*) and postural grades. *J Zool* 224:577–588.
- Giles LW. 1948. Polydactylism in an alligator. *Copeia* 1948:214.
- Griffin TM, Main RP, Farley CT. 2004. Biomechanics of quadrupedal walking: How do four-legged animals achieve inverted pendulum-like movements? *J Exp Biol* 207:3545–3558.
- Grigg GC, Kirshner D. 2015. *Biology and evolution of Crocodylians*. Clayton, Australia: CSIRO Publishing.
- Gugolek A, Strychalski J, Konstantynowicz M. 2011. Polydactyly in Arctic foxes (*Vulpes lagopus*). *Turkish J Vet Anim Sci* 35:277–280.
- Haines RW. 1946. A revision of the movements of the forearm in tetrapods. *J Anat* 80:1.
- Hinchliffe JR. 2002. Developmental basis of limb evolution. *Int J Dev Biol* 46:835–845.
- Hitschfeld E, Auer M, Fritz U. 2008. Phalangeal formulae and ontogenetic variation of carpal morphology in *Testudo horsfieldii* and *T. hermanni*. *Amphibia-Reptilia* 29:93–99.
- Holmgren N. 1933. On the origin of the tetrapod limb. *Acta Zool-Stockholm* 14:185–295.
- Hrbek T, Vasconcelos WR, Rebelo G, Farias IP. 2008. Phylogenetic relationships of South American alligatorids and the caiman of Madeira River. *J Exp Zool A Ecol Genet Physiol* 309A:588–599.
- Hutchinson JR. 2006. The evolution of locomotion in archosaurs. *Comptes Rendus Palevol* 5:519–530.
- Irmis RB, Nesbitt SJ, Sues H-D. 2013. Early crocodylomorpha. *Geol Soc Lond Special Publ* 379:275–302.
- Kaliontzopoulou A, Salvi D, Gomes V, Maia JPMC, Kaliontzopoulos P. 2013. Polydactyly in the Tyrrhenian wall lizard (*Podarcis tiliguerta*). *Acta Herpetol* 8:75–78.
- Kardong KV. 2012. *Vertebrates: Comparative anatomy, function, evolution*. 6th ed. New York, USA: McGraw-Hill Companies.
- Kükenthal W. 1893. Zur Entwicklung des Handskelettes des Krokodils. (Gegenbaur’s) *Morphologisches Jahrbuch* 19:42–55.
- Kundrát M. 2009. Primary chondrification foci in the wing basipodium of *Struthio camelus* with comments on interpretation of autopodial elements in Crocodylia and Aves. *J Exp Zool B Mol Dev Evol* 312B:30–41.
- Kundrát M, Seichert V, Russell AP, Smetana K. 2002. Pentadactyl pattern of the avian wing autopodium and pyramid reduction hypothesis. *J Exp Zool A Ecol Genet Physiol* 294:152–159.
- Lada GA. 1999. Polydactyly in anurans in the Tambov Region (Russia). *Russ J Herpetol* 6:104–106.
- Lang JW, Andrews HV. 1994. Temperature-dependent sex determination in crocodylians. *J Exp Zool* 270:28–44.

- Larsson HC, Heppleston AC, Elsey RM. 2010. Pentadactyl ground state of the manus of *Alligator mississippiensis* and insights into the evolution of digital reduction in Archosauria. *J Exp Zool B Mol Dev Evol* 314B:571–579.
- Larsson HC, Wagner GP. 2002. Pentadactyl ground state of the avian wing. *J Exp Zool A Ecol Genet Physiol* 294:146–151.
- Leal F, Tarazona OA, Ramirez-Pinilla MP. 2010. Limb development in the gekkonid lizard *Gonatodes albogularis*: A reconsideration of homology in the lizard carpus and tarsus. *J Morphol* 271:1328–1341.
- Lima FC, Viera LG, Santos ALQ, Pereira HCD, Simone SBS, Hirano LQL, Romão MF, Silva JMM, Coutinho ME. 2011. Skeletogenesis of the pectoral girdle and forelimbs in embryos of *Caiman yacare* (Daudin, 1802) (Crocodylia, Alligatoridae). *J Morphol Sci* 28:4–10.
- Lyson TR, Bever GS, Bhullar B-AS, Joyce WG, Gauthier JA. 2010. Transitional fossils and the origin of turtles. *Biol Lett* 6:830–833.
- Machado C, Kwet A, Schlueter A. 2010. Polydactyly and polymely in two populations of *Rana temporaria* and *Pelophylax esculentus* (Anura, Ranidae) in southern Germany. *Salamandra* 46:239–242.
- Man Z, Yishu W, Peng Y, Xiaobing W. 2011. Crocodylian phylogeny inferred from twelve mitochondrial protein-coding genes, with new complete mitochondrial genomic sequences for *Crocodylus acutus* and *Crocodylus novaeguineae*. *Mol Phylogenet Evol* 60:62–67.
- Martínez-Silvestre A, Soler J, Solé R, Sampere X. 1997. Polidactilia en *Testudo hermanni* y causas teratogénicas en reptiles. *Bol Assoc Herpetol Españ* 8:35–38.
- Meers MB. 2003. Crocodylian forelimb musculature and its relevance to Archosauria. *Anat Rec A* 274A:891–916.
- Milàn J, Hedegaard R. 2010. Interspecific variation in tracks and trackways from extant crocodylians. *N Mexico Museum Nat Hist Sci Bull* 51:15–29.
- Mook CC. 1951. The ancestral crocodylian *Protosuchus*. *Bull Am Museum Nat Hist* 97:143–182.
- Müller GB, Alberch P. 1990. Ontogeny of the limb skeleton in *Alligator mississippiensis*—Developmental invariance and change in the evolution of archosaur limbs. *J Morphol* 203:151–164.
- Nesbitt SJ, Butler RJ, Ezcurra MD, Barrett PM, Stocker MR, Angielczyk KD, Smith RMH, Sidor CA, Niedzwiedzki G, Sennikov AG, et al. 2017. The earliest bird-line archosaurs and the assembly of the dinosaur body plan. *Nature* 544:484–487.
- Nesbitt SJ, Desojo JB, Irmis RB. 2013. Anatomy, phylogeny and palaeobiology of early archosaurs and their kin. *Geol Soc Lond Special Publ* 379:1–7.
- Oaks JR. 2011. A time-calibrated species tree of Crocodylia reveals a recent radiation of the true crocodiles. *Evolution* 65:3285–3297.
- Ortega-Ortiz JG, Villa-Ramírez B, Gersenowies JR. 2000. Polydactyly and other features of the manus of the vaquita, *Phocoena sinus*. *Mar Mammal Sci* 16:277–286.
- Pace CM, Blob RW, Westneat MW. 2001. Comparative kinematics of the forelimb during swimming in red-eared slider (*Trachemys scripta*) and spiny softshell (*Apalone spinifer*) turtles. *J Exp Biol* 204:3261–3271.
- Parrish JM. 1987. The origin of crocodylian locomotion. *Paleobiology* 13:396–414.
- Pol D, Rauhut OWM, Lecuona A, Leardi JM, Xu X, Clark JM. 2013. A new fossil from the Jurassic of Patagonia reveals the early basi-cranial evolution and the origins of Crocodyliformes. *Biol Rev* 88:862–872.
- Potthoff T. 1984. Clearing and staining technique. In: Moser HG, Richardson WJ, Cohen DM, Fahay MP, Kendall AW, Jr., Richardson SL, editors. *Ontogeny and systematics of fishes*. Lawrence KA: ASIH. p 48–50.
- Pugsley SL. 1985. Congenital malformations in a common marmoset (*Callithrix jacchus*) similar to human 13-trisomy syndrome. *Lab Anim* 19:123–124.
- Regnault S, Hutchinson JR, Jones ME. 2017. Sesamoid bones in tuatara (*Sphenodon punctatus*) investigated with X-ray microtomography, and implications for sesamoid evolution in Lepidosauria. *J Morphol* 278:62–72.
- Reilly SM, Elias JA. 1998. Locomotion in *Alligator mississippiensis*: Kinematic effects of speed and posture and their relevance to the sprawling-to-erect paradigm. *J Exp Biol* 201:2559–2574.
- Reno PL, Horton WE, Elsey RM, Lovejoy CO. 2007. Growth plate formation and development in alligator and mouse metapodials: Evolutionary and functional implications. *J Exp Zool B Mol Dev Evol* 308B:283–296.
- Renous S, Gasc JP, Bels VL, Wicker R. 2002. Asymmetrical gaits of juvenile *Crocodylus johnstoni*, galloping Australian crocodiles. *J Zool* 256:311–325.
- Rest JS, Ast JC, Austin CC, Waddell PJ, Tibbetts EA, Hay JM, Mindell DP. 2003. Molecular systematics of primary reptilian lineages and the tuatara mitochondrial genome. *Mol Phylogenet Evol* 29:289–297.
- Rieppel O. 1993a. Die Gliedmaßen der Tetrapoden—ein aktuelles Problem der Evolutionsforschung. *Naturwissenschaften* 80:295–301.
- Rieppel O. 1993. Studies on skeleton formation in reptiles. v. Patterns of ossification in the skeleton of *Alligator mississippiensis* DAUDIN (Reptilia, Crocodylia). *Zool J Linn Soc Lond* 109:301–325.
- Rieppel O. 1994. Studies on skeleton formation in reptiles—Patterns of ossification in the skeleton of *Lacerta agilis exigua* Eichwald (Reptilia, Squamata). *J Herpetol* 28:145–153.
- Romão MF, Santos ALQ, Lima FC. 2012. Skeletal anatomy of the Pectoral Girdle, Stylopodium and Zeugopodium of *Caiman latirostris* (Daudin, 1802) (Crocodylia: Alligatoridae). *Int J Biol* 4:40–45.
- Romer AS. 1956. *Osteology of the reptiles*. Illinois: University of Chicago Press.
- Salisbury S, Frey E. 2000. A biomechanical transformation model for the evolution of semi-spheroidal articulations between adjoining vertebral bodies in crocodylians. In: Grigg G, Seebacher F, Franklin C, editors. *Crocodylian biology and evolution*. Chipping Norton: Surrey Beatty and Sons. p 85–134.
- Salisbury SW, Frey E. 2004. Anatomical correlates associated with the bracing system of extant crocodylians: Addressing the locomotor inadequacies of the Indian Gharial. In: 17th Working Meeting of the IUCN-SSC Crocodile Specialist Group: IUCN-The World Conservation Union. p 394–394.
- Sedmera D, Misek I, Klima M. 1997. On the development of Cetacean extremities: II. Morphogenesis and histogenesis of the flippers in the spotted dolphin (*Stenella attenuata*). *Eur J Morphol* 35:117–123.
- Serenio PC, Larsson HCE, Sidor CA, Gado B. 2001. The giant crocodyliform *Sarcosuchus* from the Cretaceous of Africa. *Science* 294:1516–1519.
- Shapiro MD. 2002. Developmental morphology of limb reduction in *Hemiergis* (Squamata: Scincidae): Chondrogenesis, osteogenesis, and heterochrony. *J Morphol* 254:211–231.
- Sheil CA. 2003. Osteology and skeletal development of *Apalone spinifer* (Reptilia: Testudines: Trionychidae). *J Morphol* 256:42–78.
- Sheil CA. 2005. Skeletal development of *Macrochelys temminckii* (Reptilia: Testudines: Chelydridae). *J Morphol* 263:71–106.
- Sheil CA, Greenbaum E. 2005. Reconsideration of skeletal development of *Chelydra serpentina* (Reptilia: Testudinata: Chelydridae): Evidence for intraspecific variation. *J Zool* 265:235–267.
- Sheil CA, Portik D. 2008. Formation and ossification of limb elements in *Trachemys scripta* and a discussion of autopodial elements in turtles. *Zool Sci* 25:622–641.
- Trutnau L, Sommerlad R. 2006. *Crocodylians*, Chimaira ed. Frankfurt am Main: Andreas S. Brahm.
- Vazquez RJ. 1992. Functional osteology of the avian wrist and the evolution of flapping flight. *J Morphol* 211:259–268.
- Vieira LG, Santos ALQ, Lima FC, Mendonça SHSTD, Menezes LT, Sebben A. 2016. Ontogeny of the appendicular skeleton in *Melanosuchus niger* (Crocodylia: Alligatoridae). *Zool Sci* 33:372–383.
- Vorobyeva EI. 1999. The problem of polydactyly in Amphibians. *Russ J Herpetol* 6:95–103.
- Wilberg EW. 2015. A new metriorhynchoid (Crocodylomorpha, Thalattosuchia) from the Middle Jurassic of Oregon and the evolutionary timing of marine adaptations in thalattosuchian crocodylomorphs. *J Vertebr Paleontol* 35:e902846.
- Willey JS, Bikenovic AR, Reilly SM, Earls KD. 2004. The tale of the tail: Limb function and locomotor mechanics in *Alligator mississippiensis*. *J Exp Biol* 207:553–563.

- Xu X, Mackem S. 2013. Tracing the evolution of avian wing digits. *Curr Biol* 23:R538–R544.
- Xu X, Zhou Z, Dudley R, Mackem S, Chuong C-M, Erickson GM, Varricchio DJ. 2014. An integrative approach to understanding bird origins. *Science* 346:1253293.
- Young MT, Brusatte SL, Ruta M, de Andrade MB. 2010. The evolution of Metriorhynchoidea (Mesoeucrocodylia, Thalattosuchia): An integrated approach using geometric morphometrics, analysis of disparity, and biomechanics. *Zool J Linn Soc Lond* 158:801–859.
- Zardoya R, Meyer A. 1998. Complete mitochondrial genome suggests diapsid affinities of turtles. *Proc Natl Acad Sci USA* 95:14226–14231.
- Zug GR. 1974. Crocodilian galloping: An unique gait for reptiles. *Copeia* 1974:550–552.