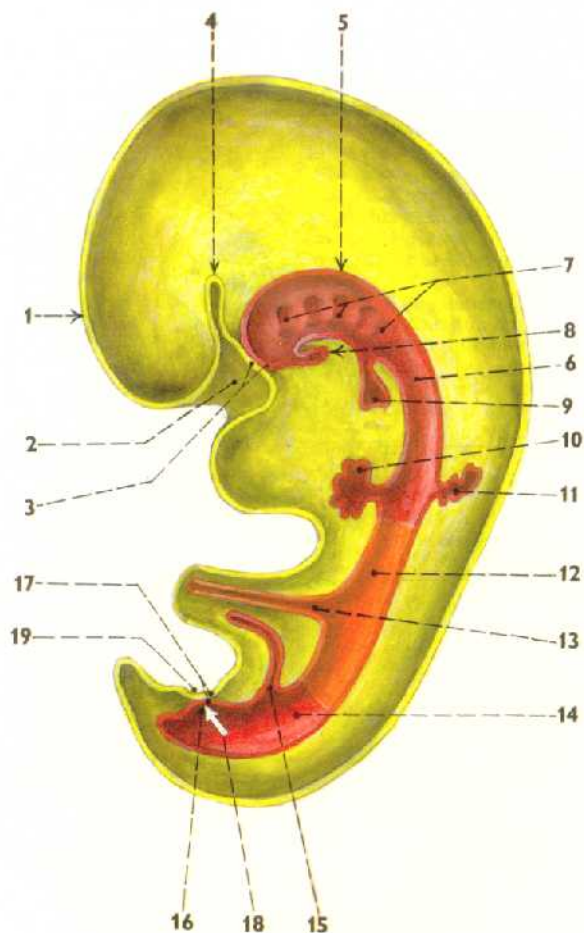


Trávicí systém

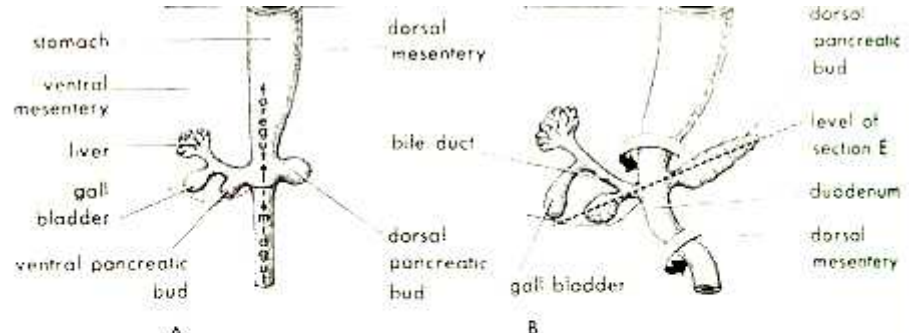
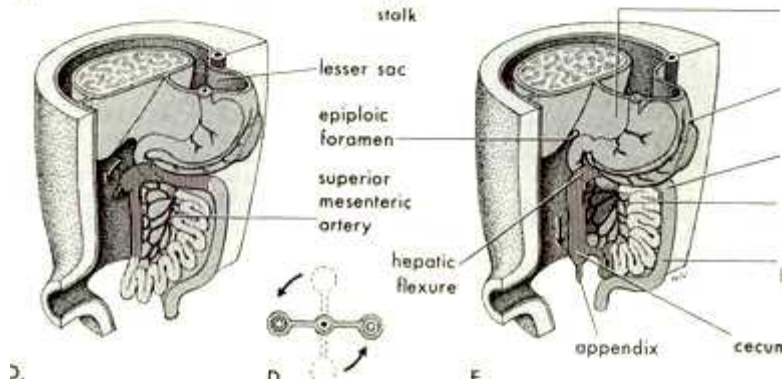
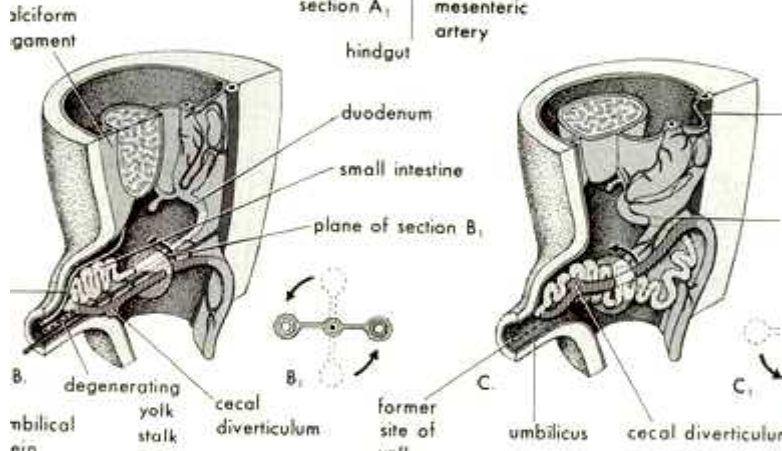
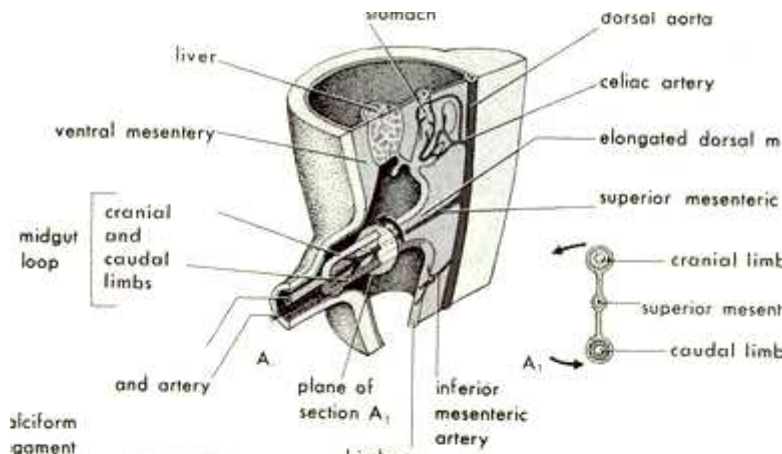
Karel Smetana

# Vývoj trávicího systému



Čihák, R.: Anatomie 2, Avicenum, Praha, 1988

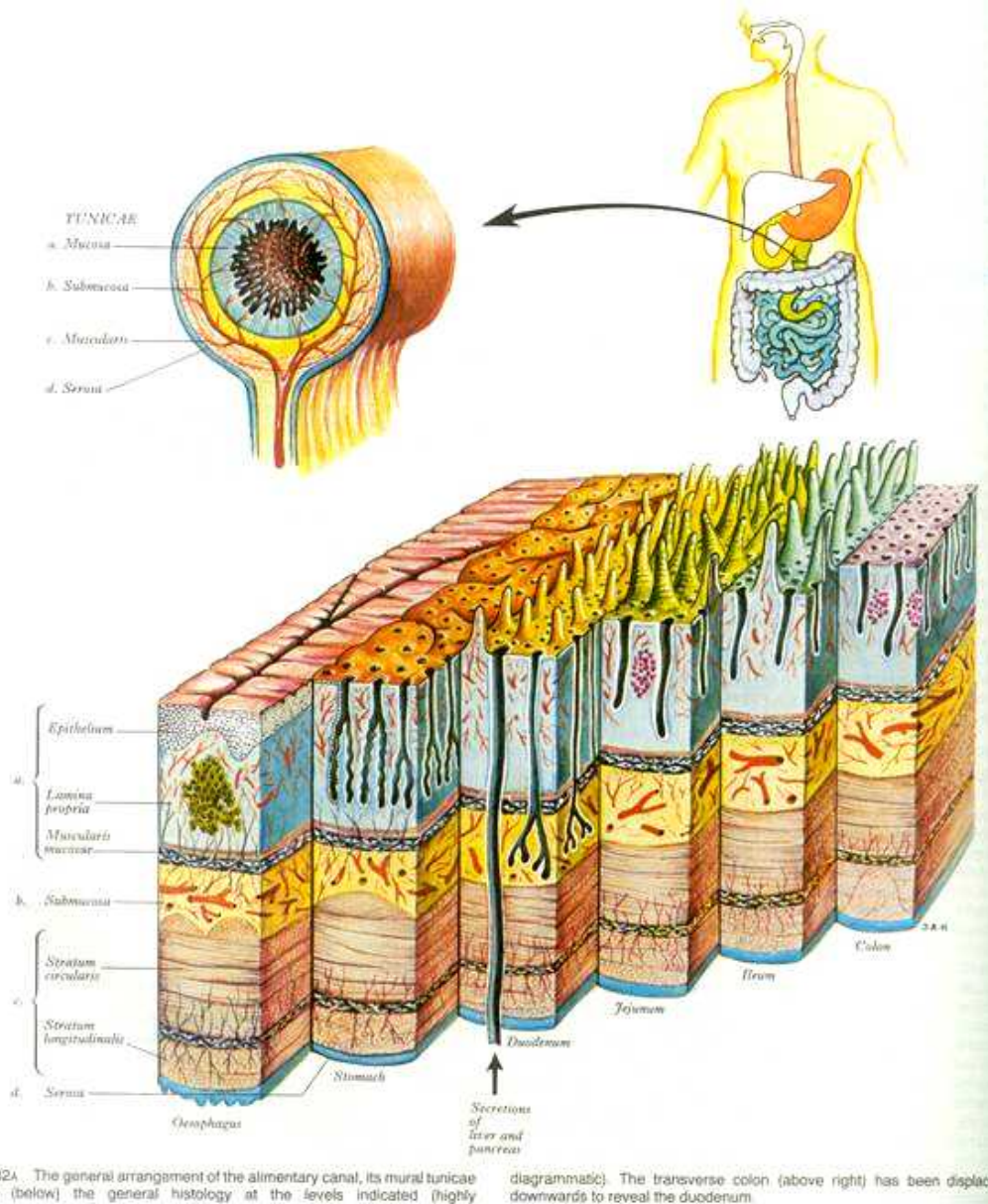
# Vývoj



Vývoj trávicího systému je spojen s:

- a) Růstem
- b) Rotacemi
- c) Srůsty

# Obecná struktura trávicí trubice

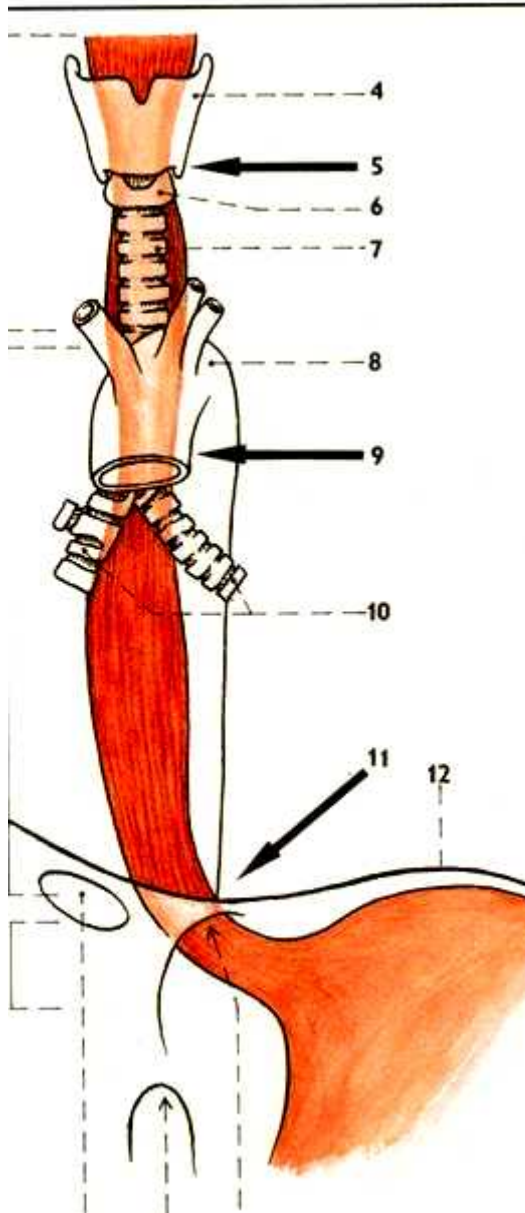


Sliznice  
Podslizniční vazivo  
Svalová vrstva  
(cirkulární+longitudinální)  
Peritoneum vs vazivo

12.82A The general arrangement of the alimentary canal, its mural tunicae and (below) the general histology at the levels indicated (highly diagrammatic). The transverse colon (above right) has been displaced downwards to reveal the duodenum.

P. L. Williams et al.: *Gray's Anatomy*. Churchill Livingstone, New York, 1995

# Oesophagus



R. Čihák: Anatomie 2, Avicenum, Praha, 1988

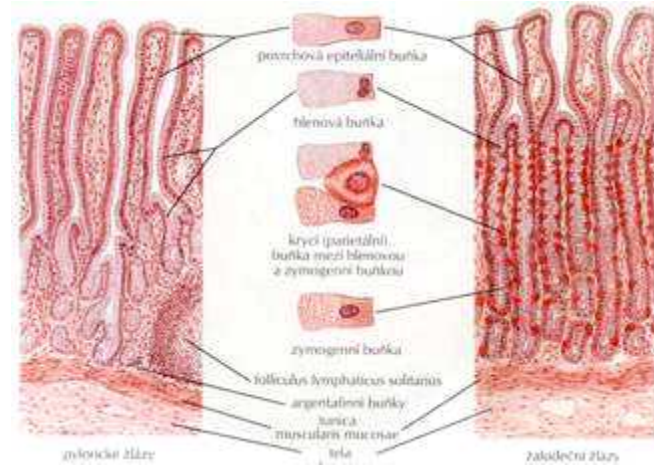
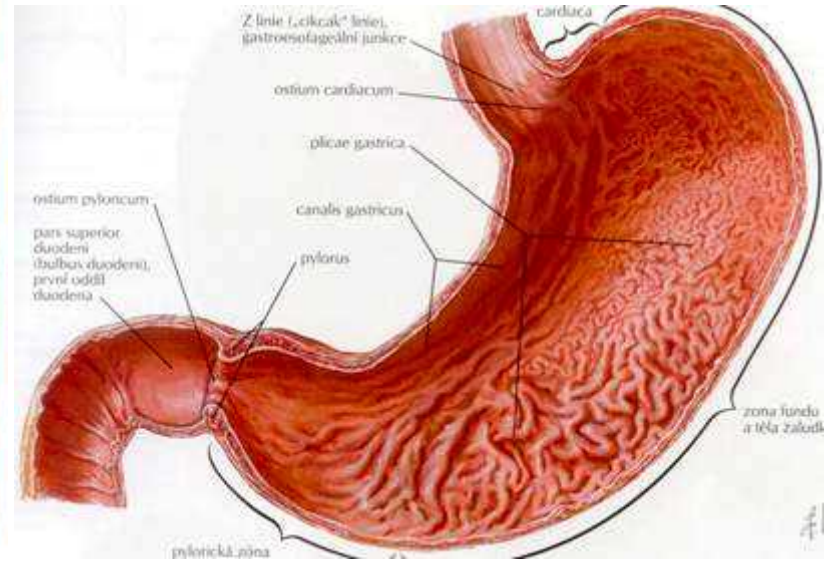
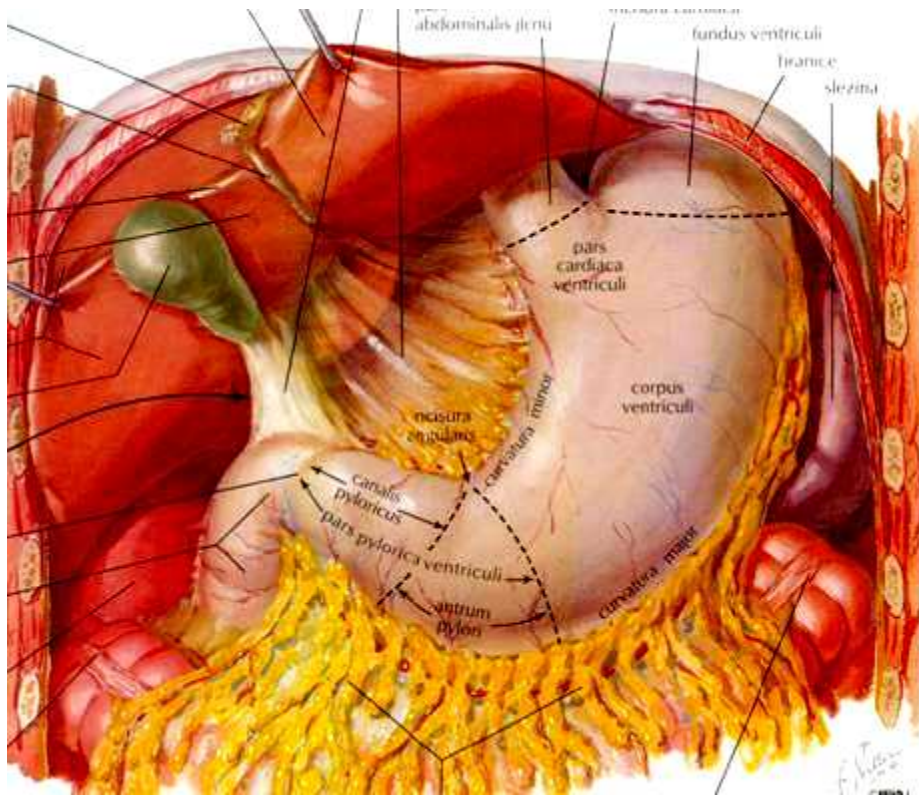
F. H. Netter: Anatomický atlas člověka. Grada/Avicenum, Praha, 2003

# Oesophagus-RTG

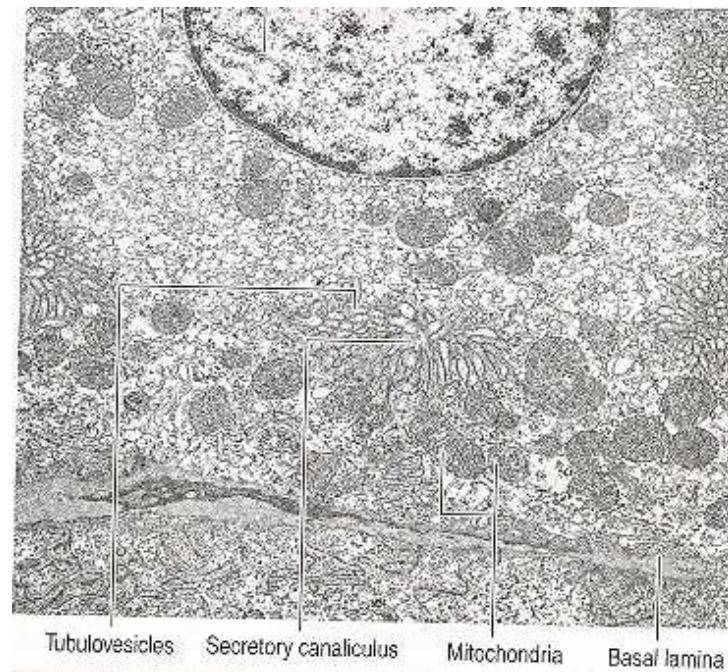
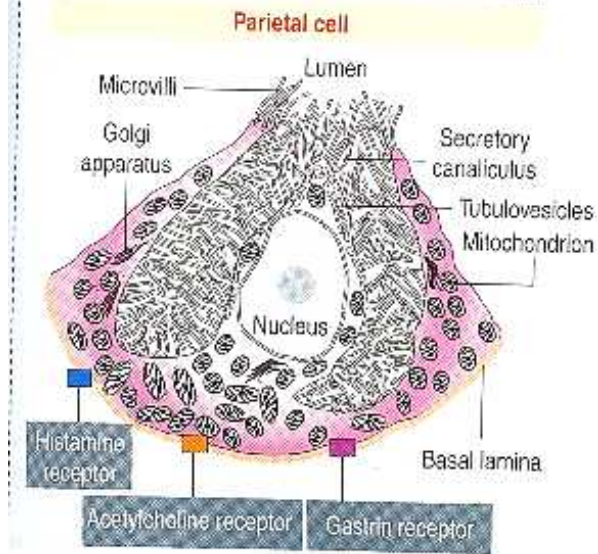
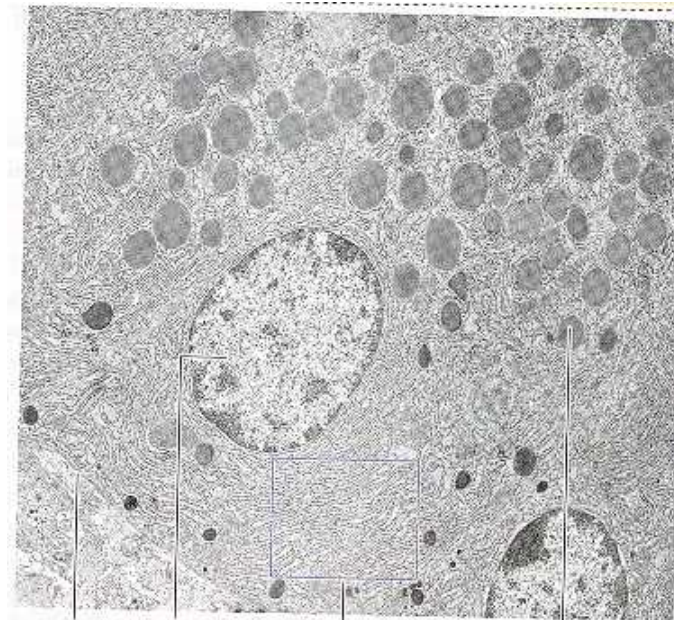
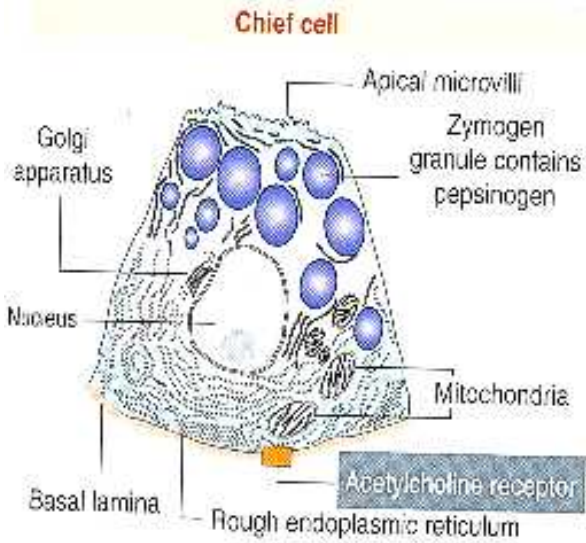




# Žaludek



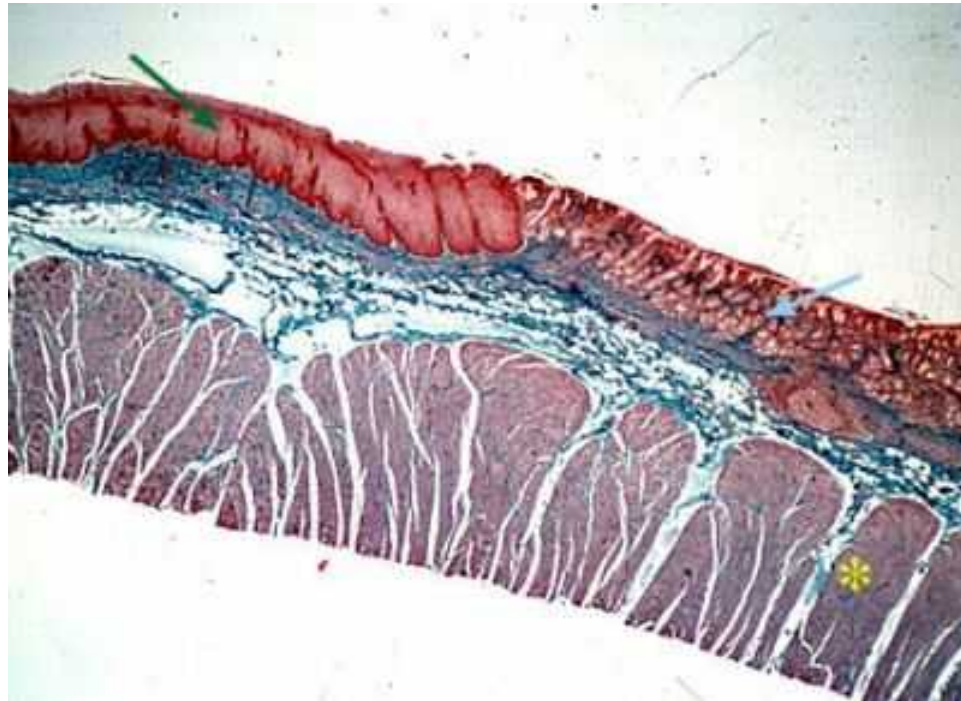




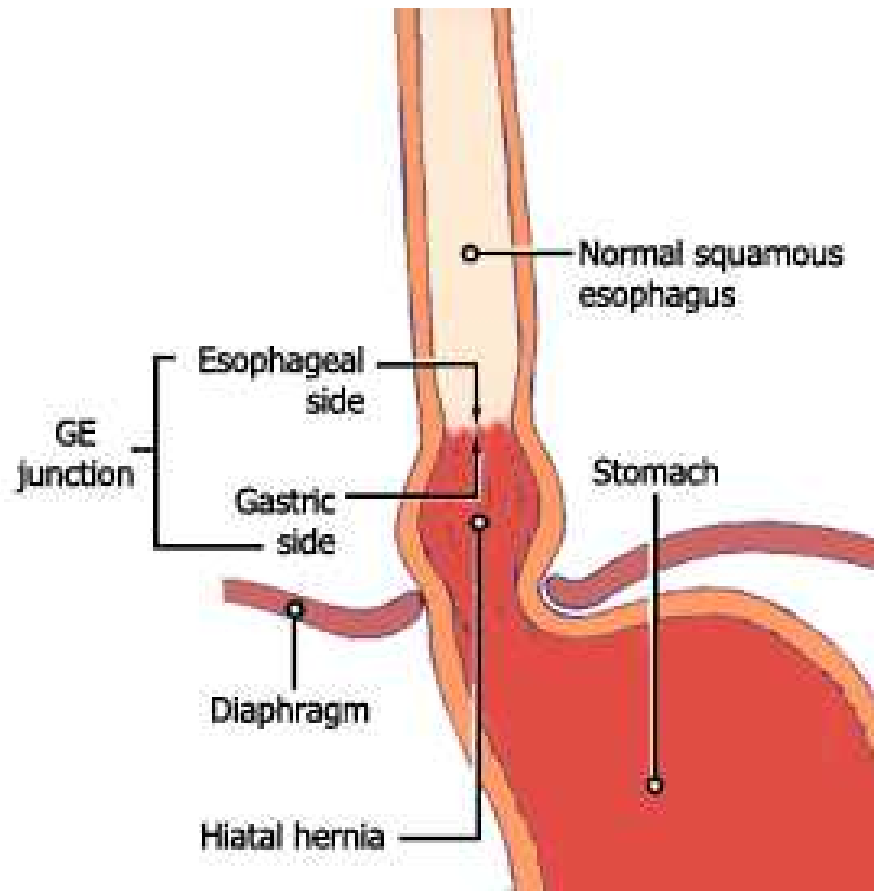
# Žaludek, RTG

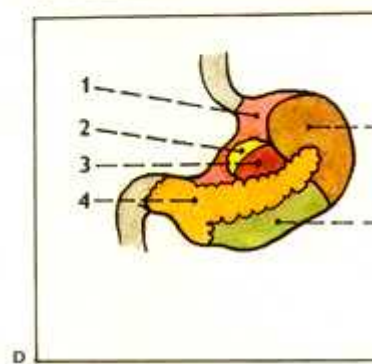
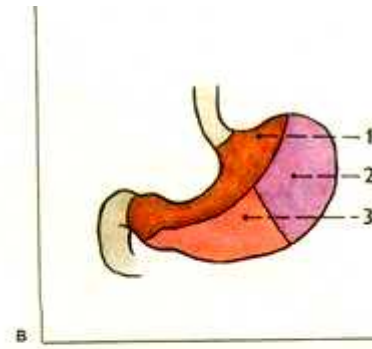
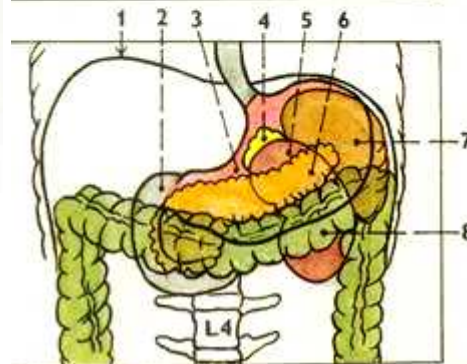
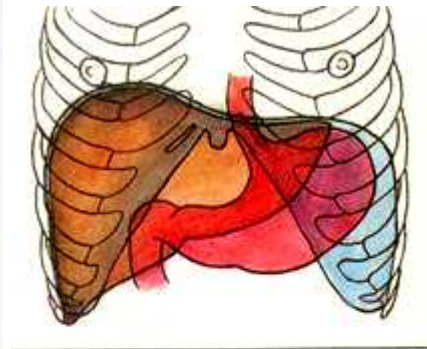
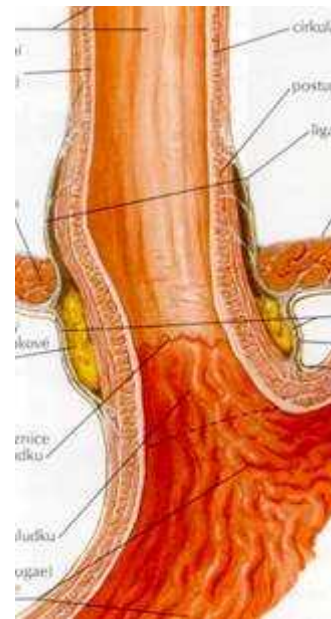
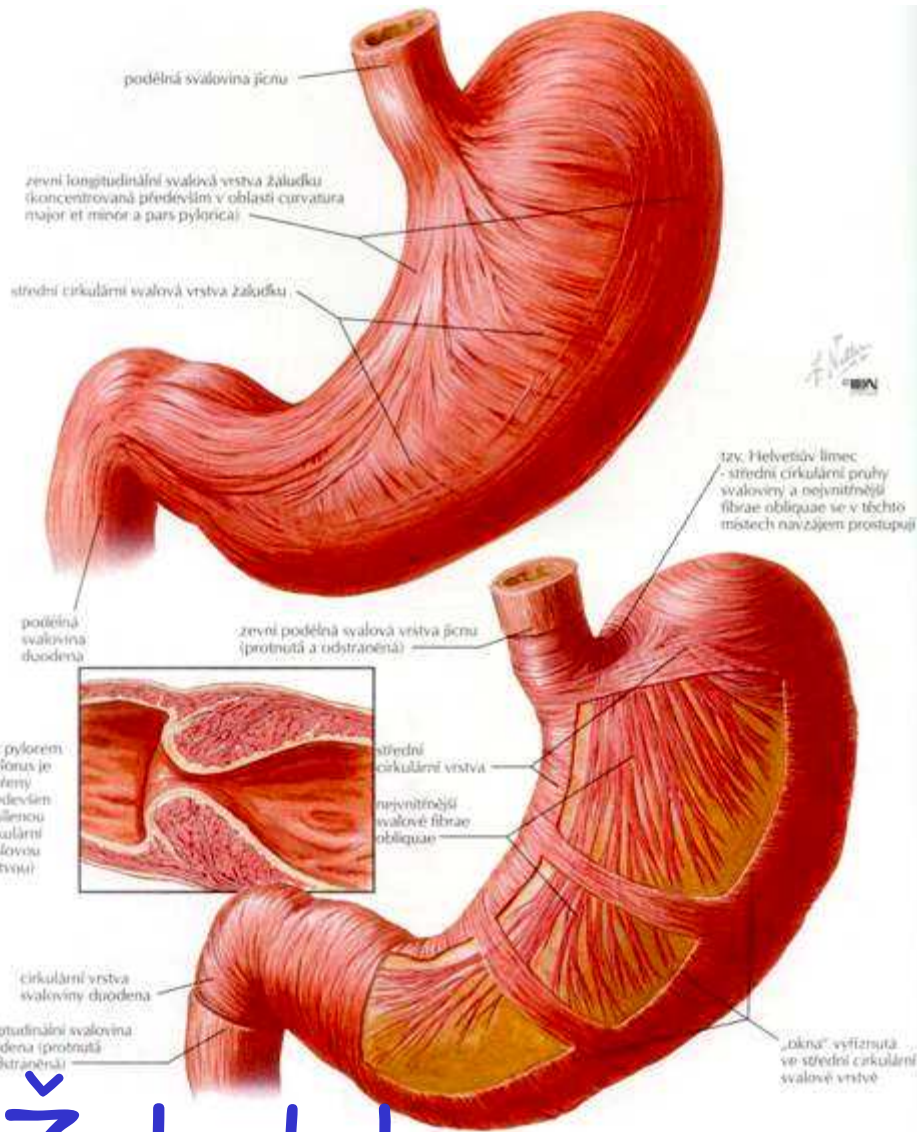


# Žaludek-cardia



# Žaludek-Hiatová hernia





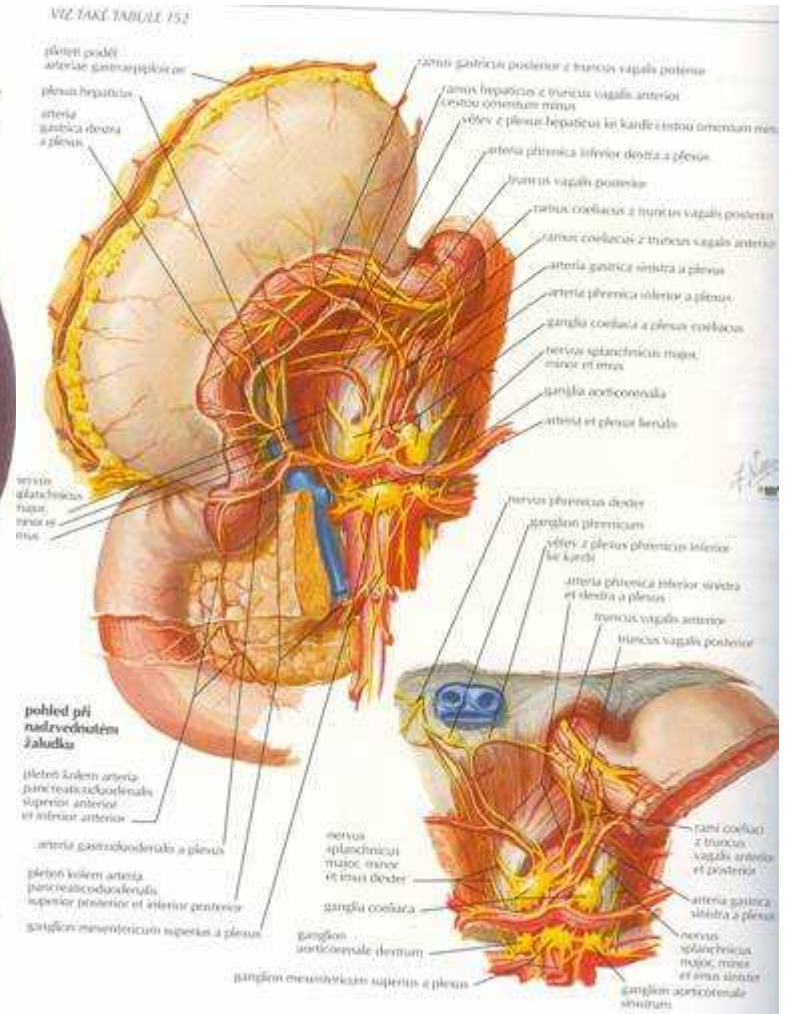
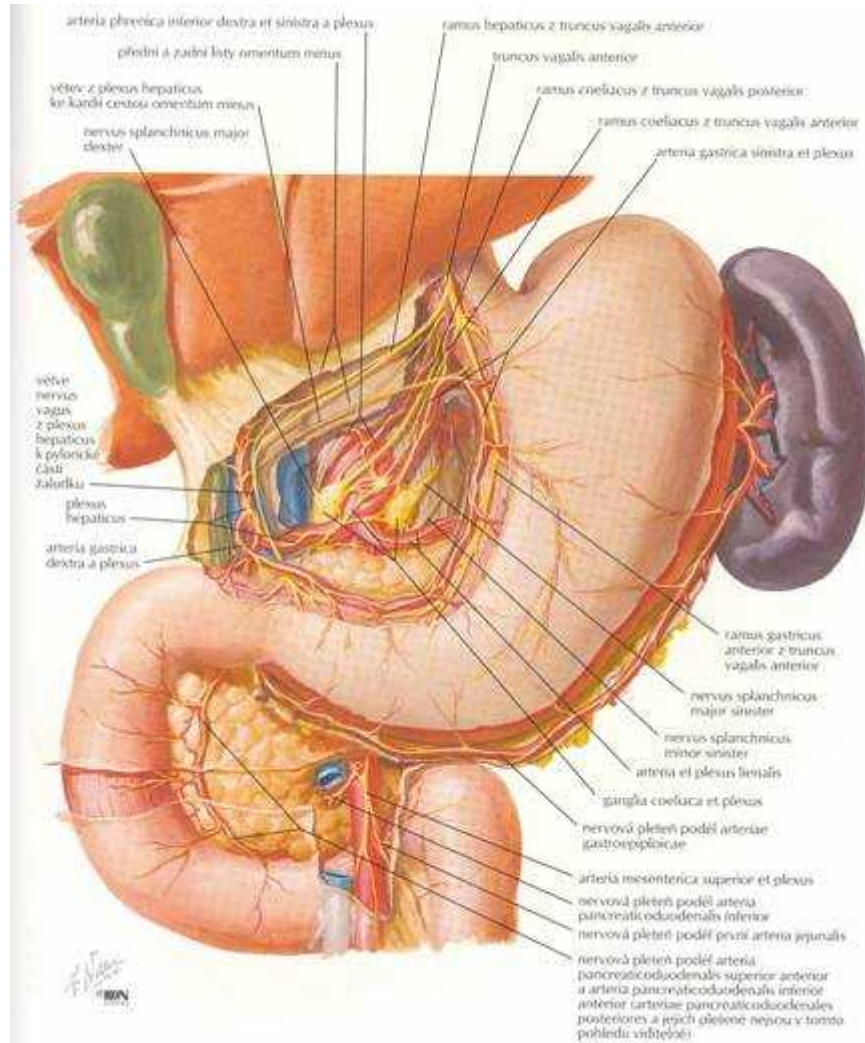
# Žaludek

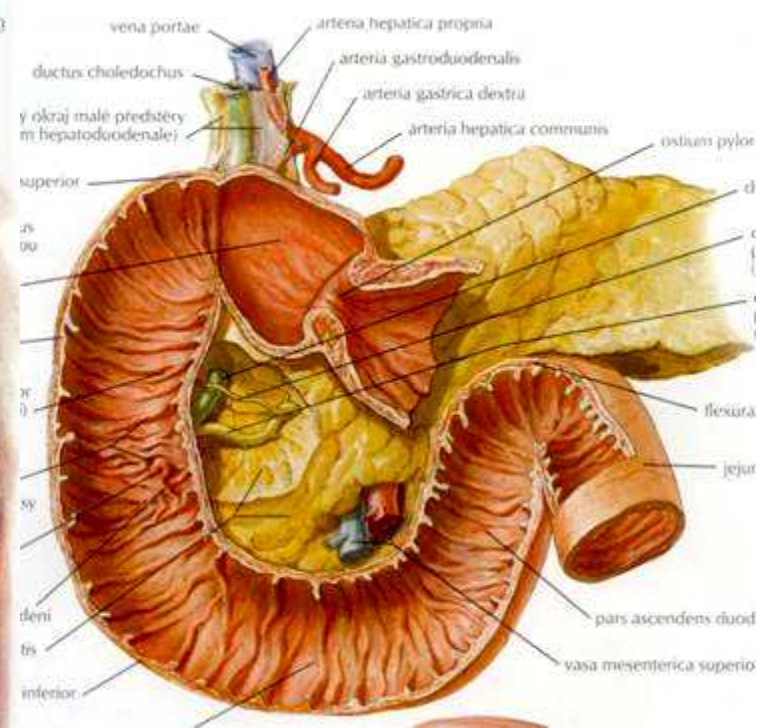
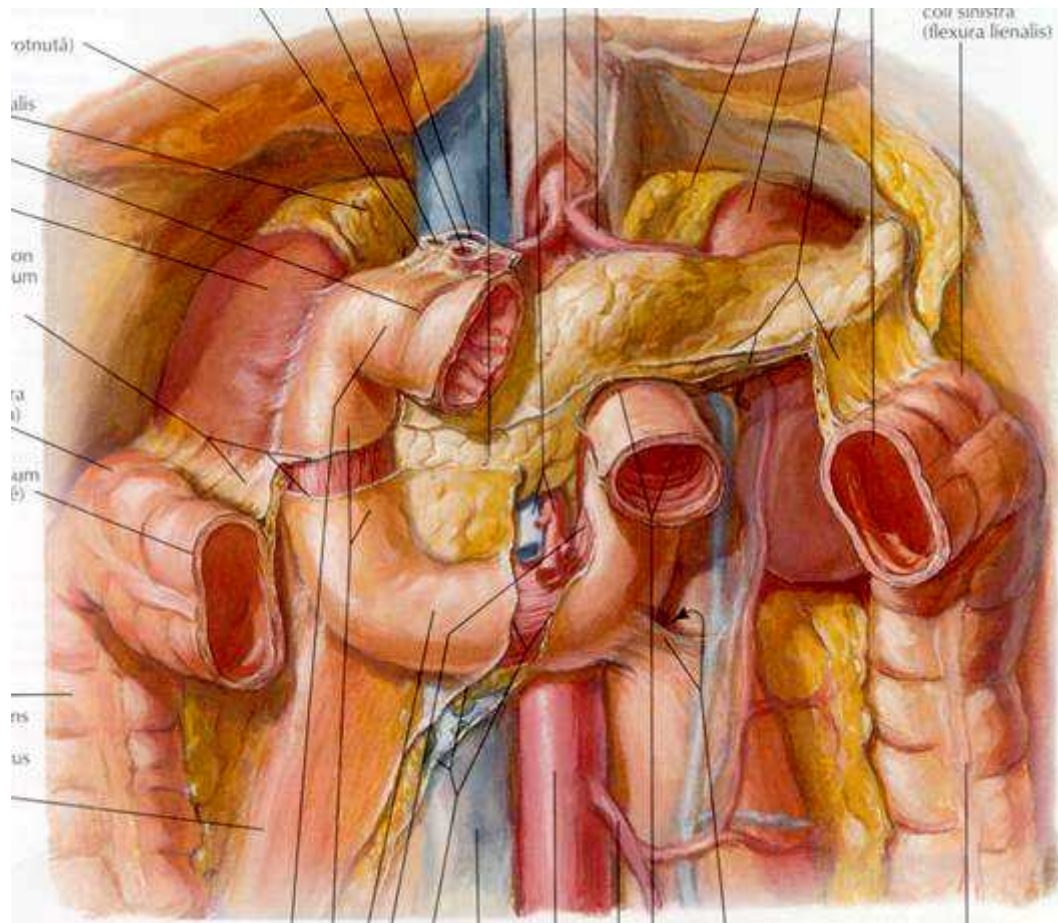
R. Čihák: Anatomie 2, Avicenum, Praha, 1988

F. H. Netter: Anatomický atlas člověka. Grada/Avicenum, Praha, 2003



# Žaludek-inervace

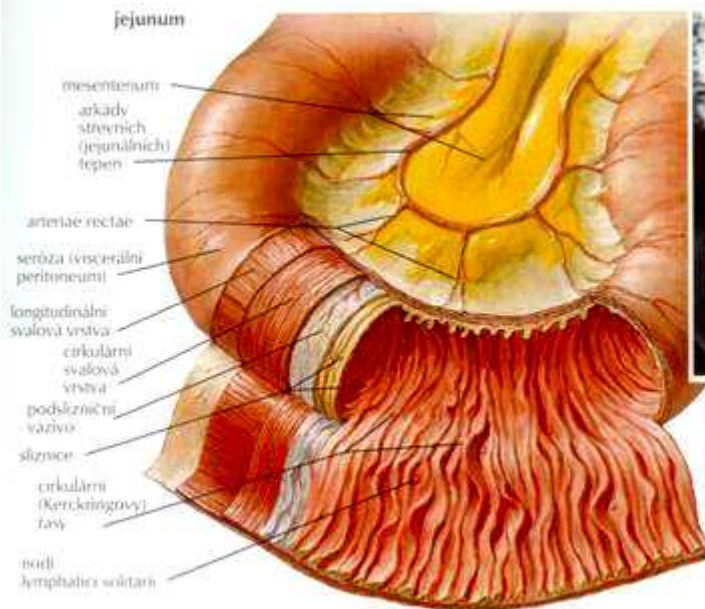




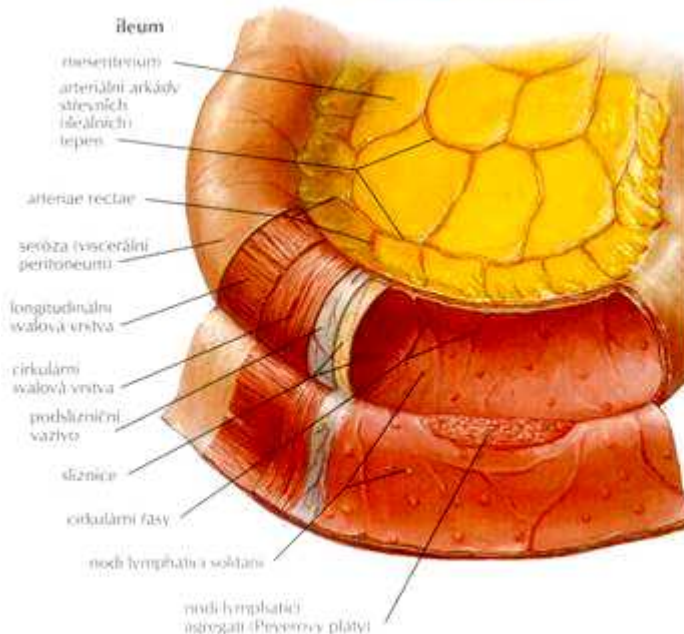
# Duodenum



# Jejunum et ileum

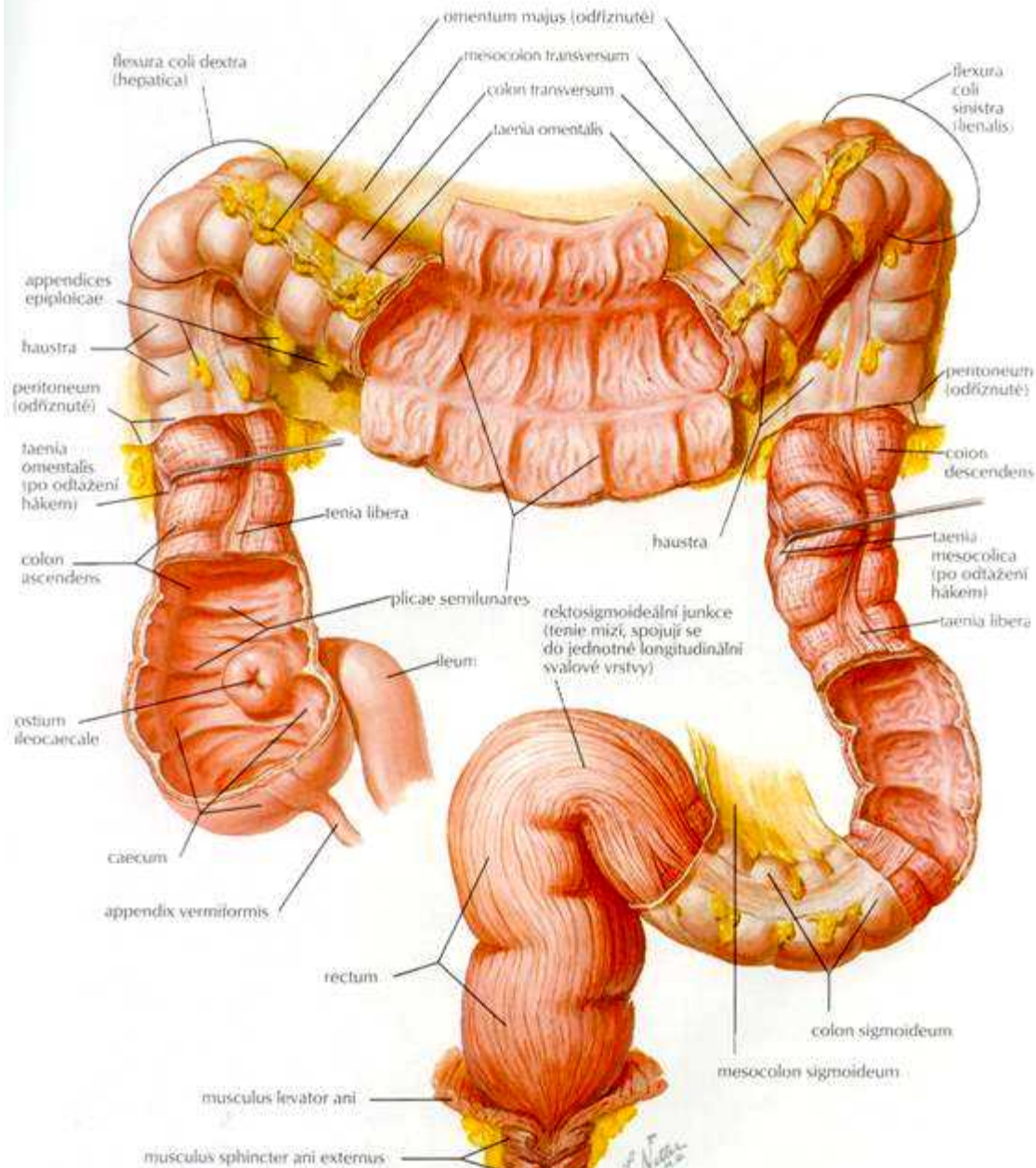


radiogram jejuna  
(kontrastní náplň barysovou kašič)



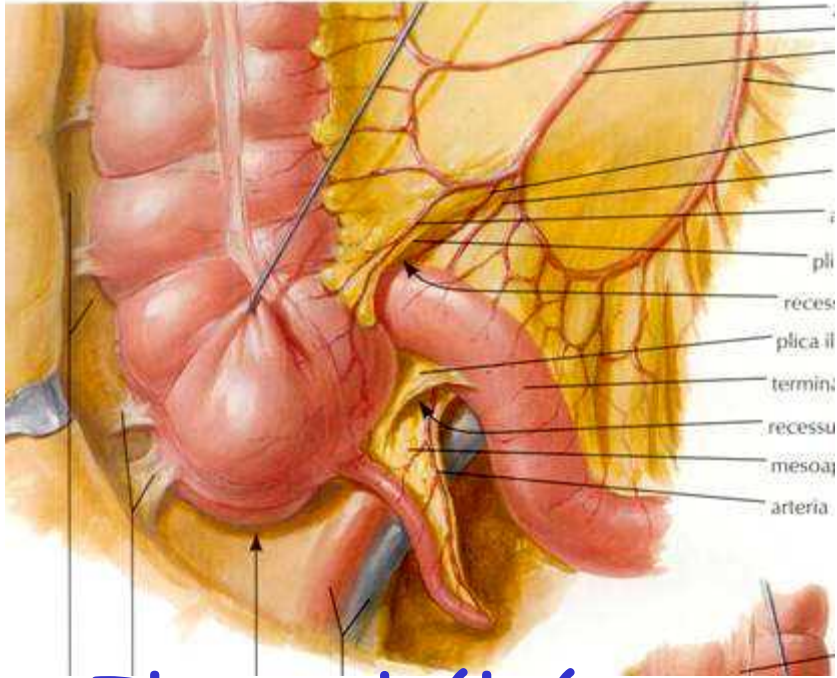
radiogram ilea  
(kontrastní náplň barysovou kašič)

F. H. Netter  
© 1998

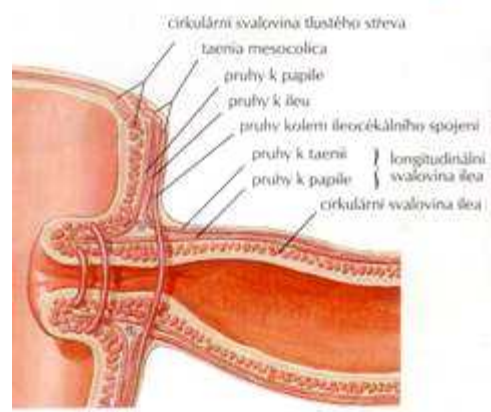
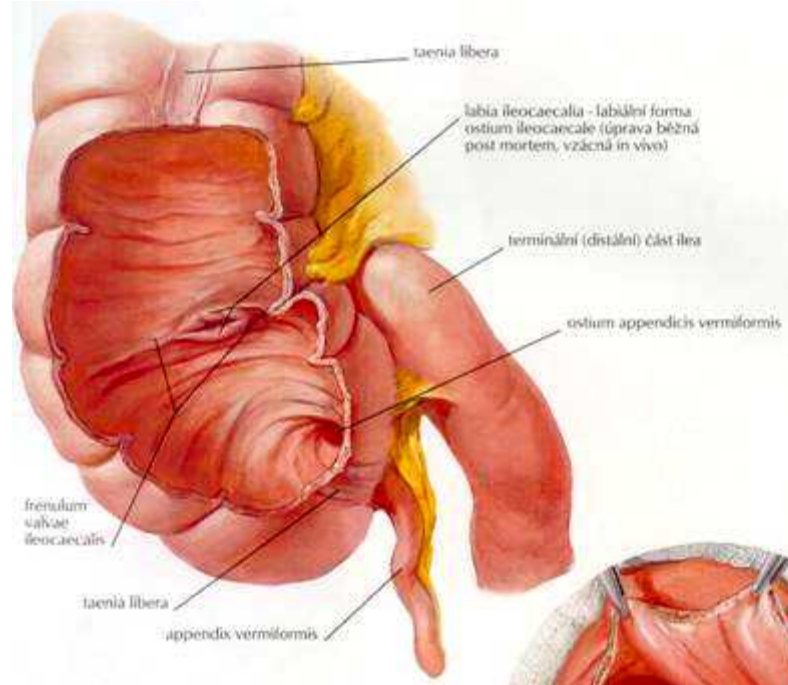


# Tlusté střevo

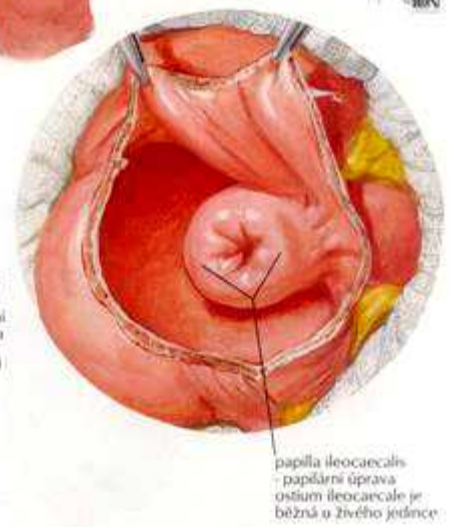
Haustrace  
tenie  
appendices epiploices



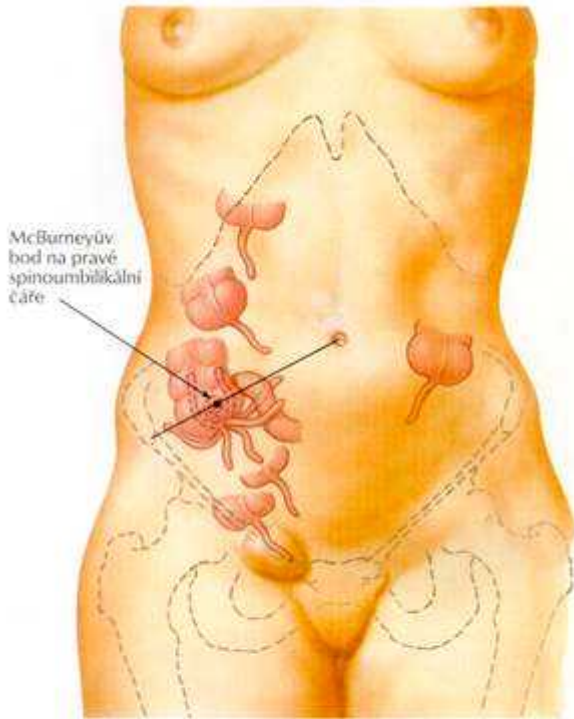
# Ileocekální přechod



chéma svalových pruhů ileocékálního ústí



# Appendix vermiformis

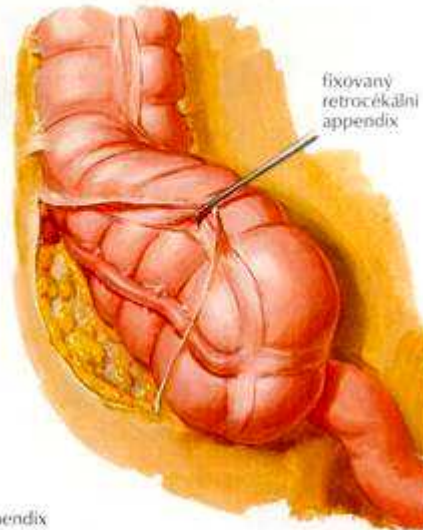


McBurneyův bod na pravé spinoumbilikální čáře

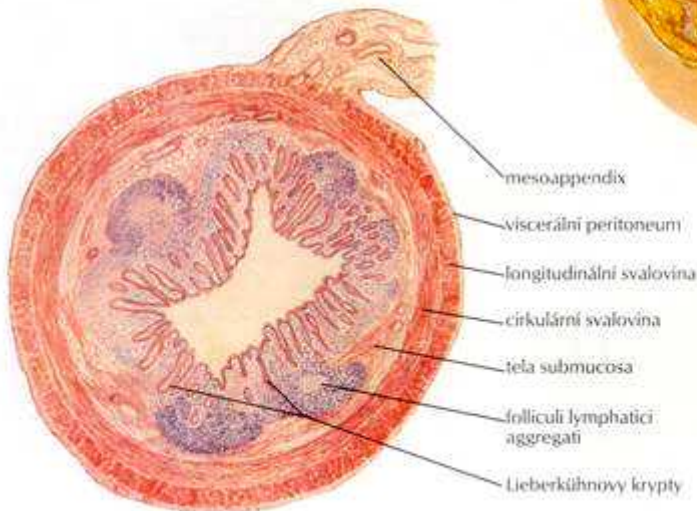
variabilita polohy appendixu



neobvykle dlouhý appendix vyčníjící do pánve (náplň baryovou kaší)

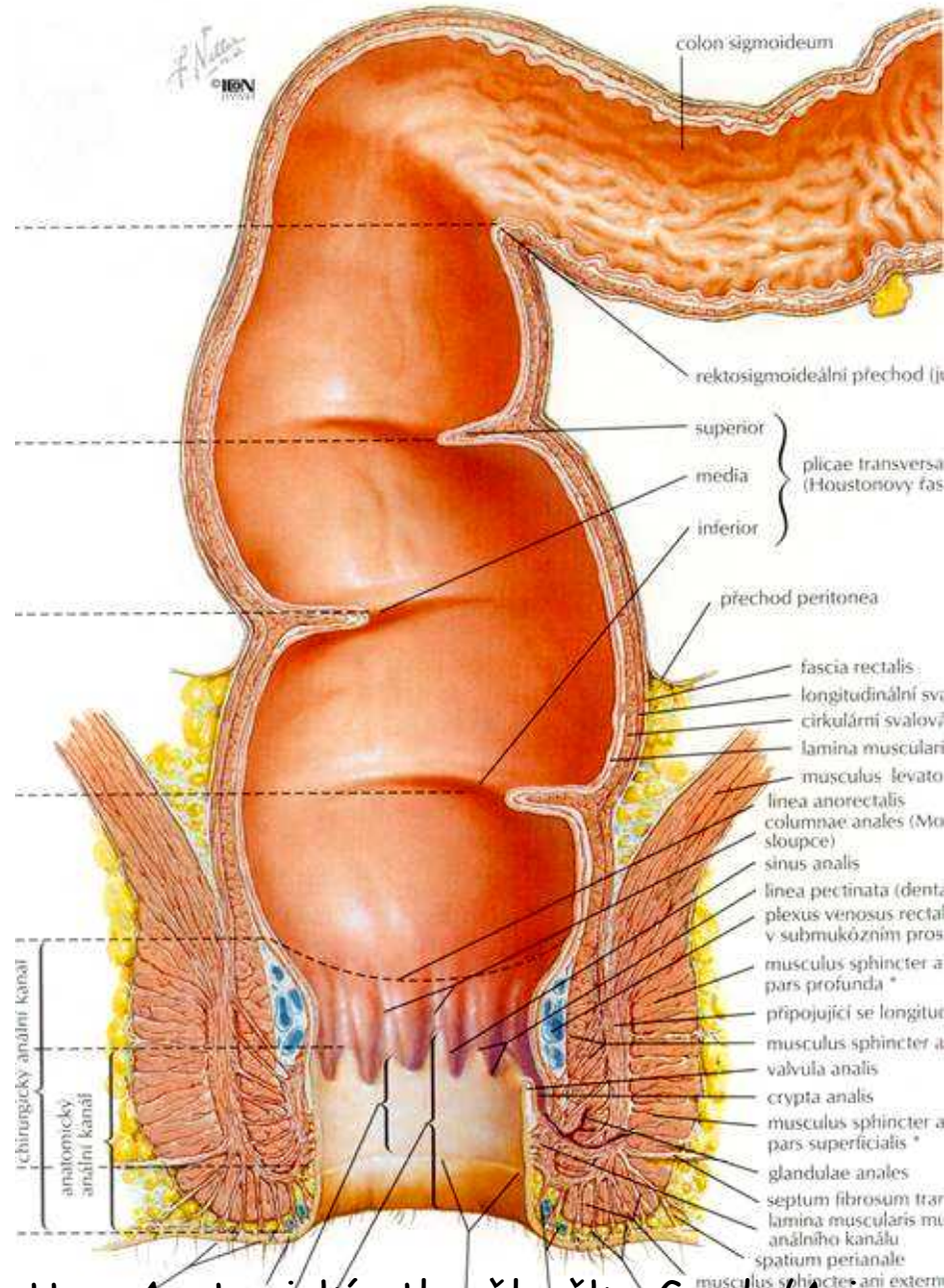


fixovaný retrocékální appendix

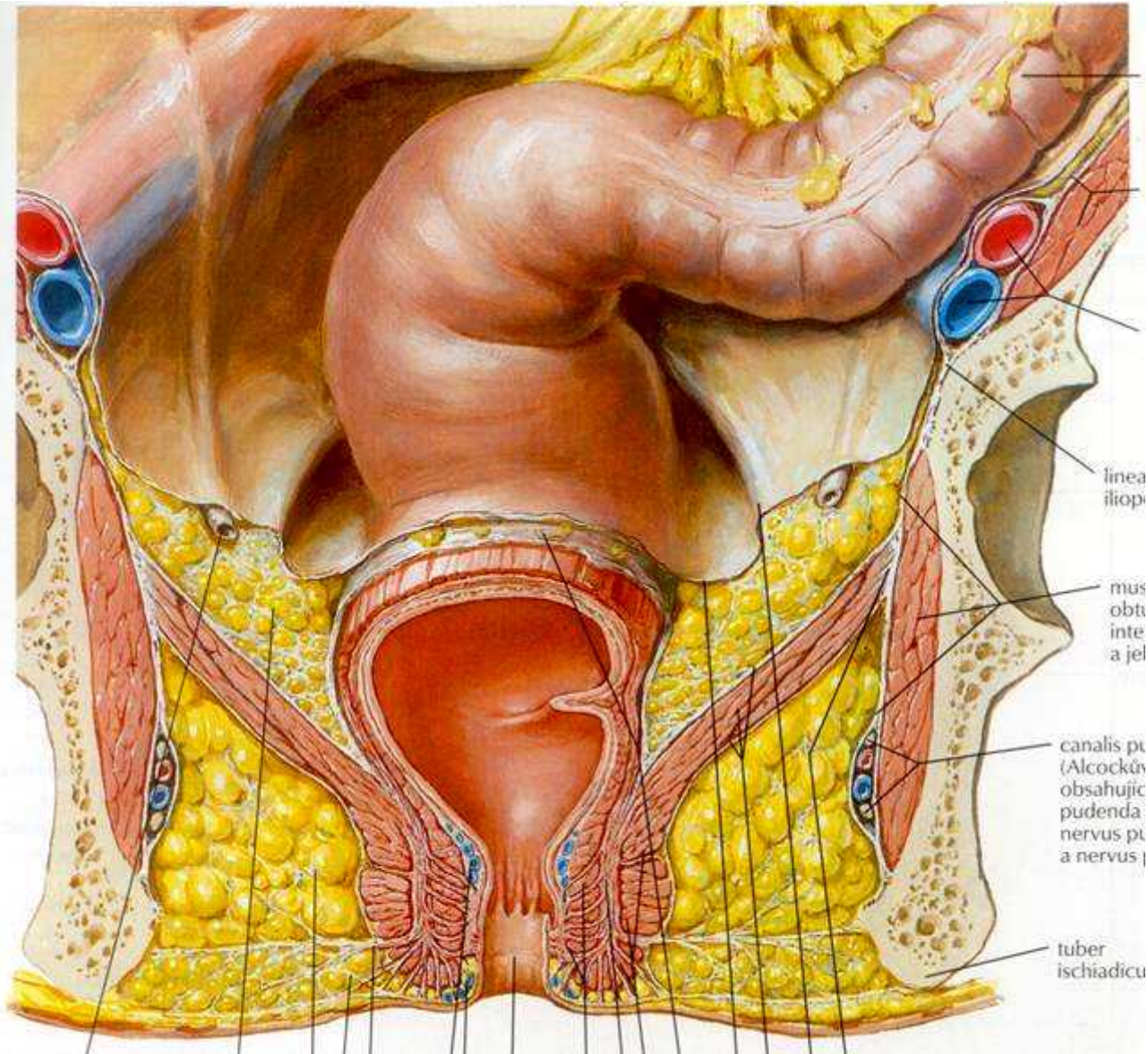


F. H. Netter  
© IBBN

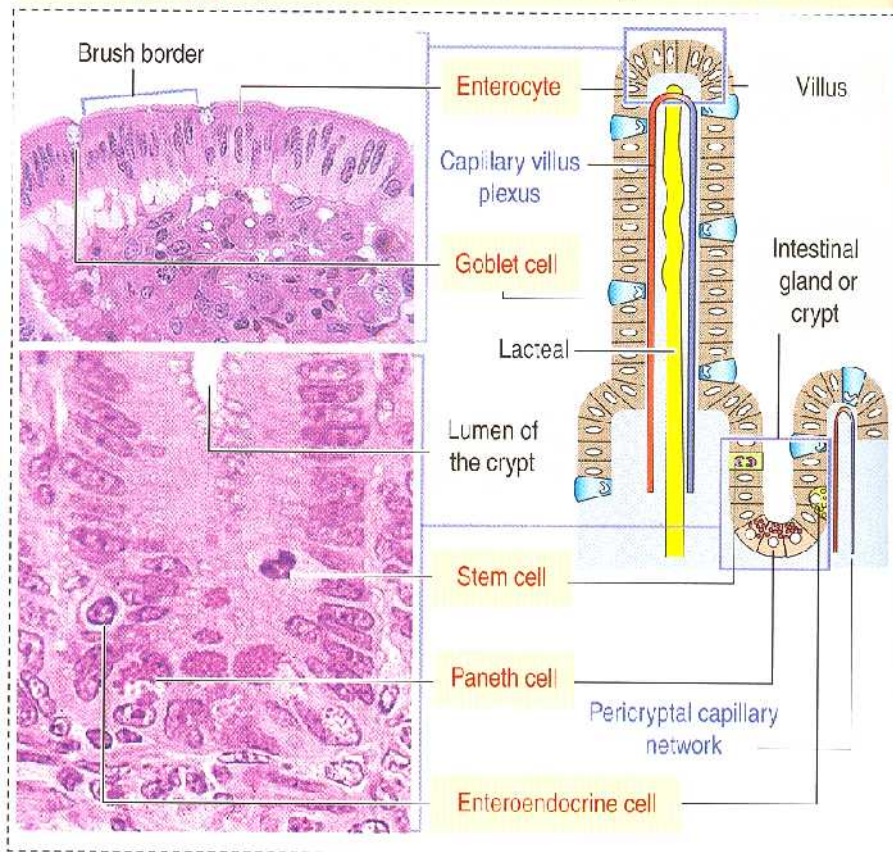
# Rectum



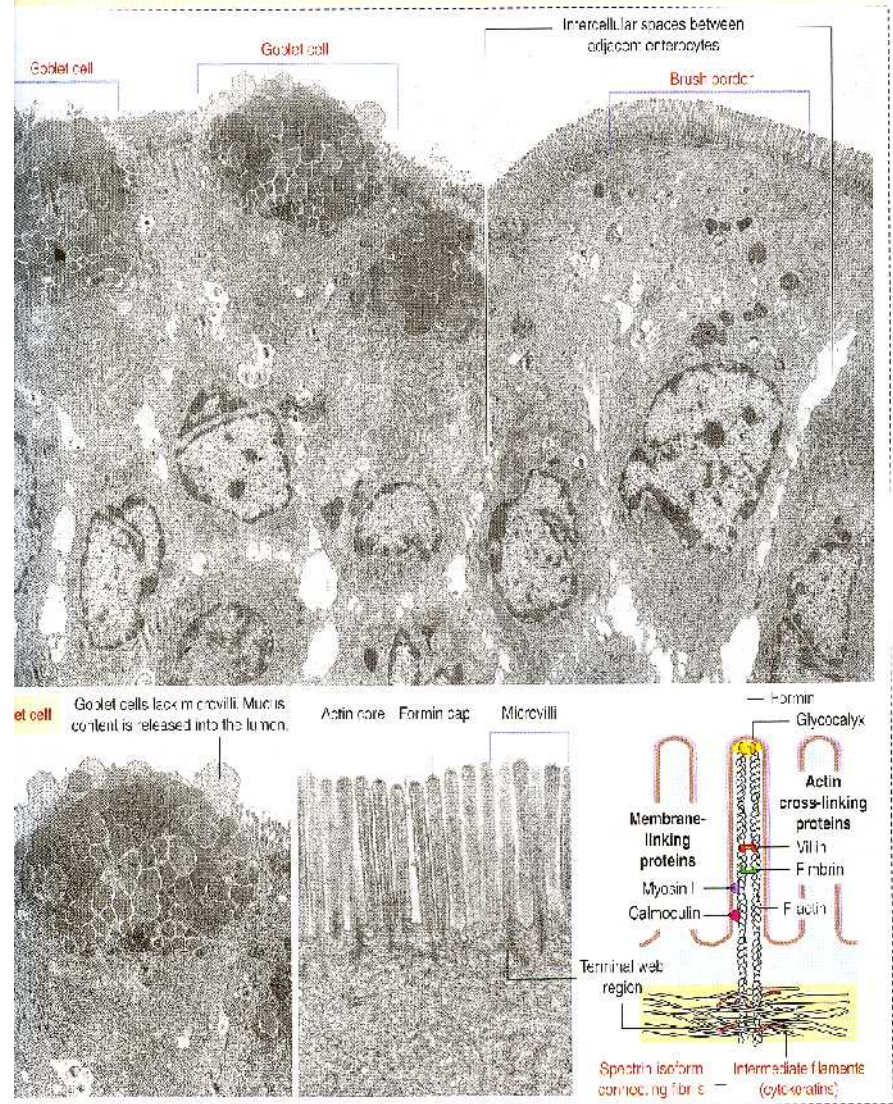
# Rectum



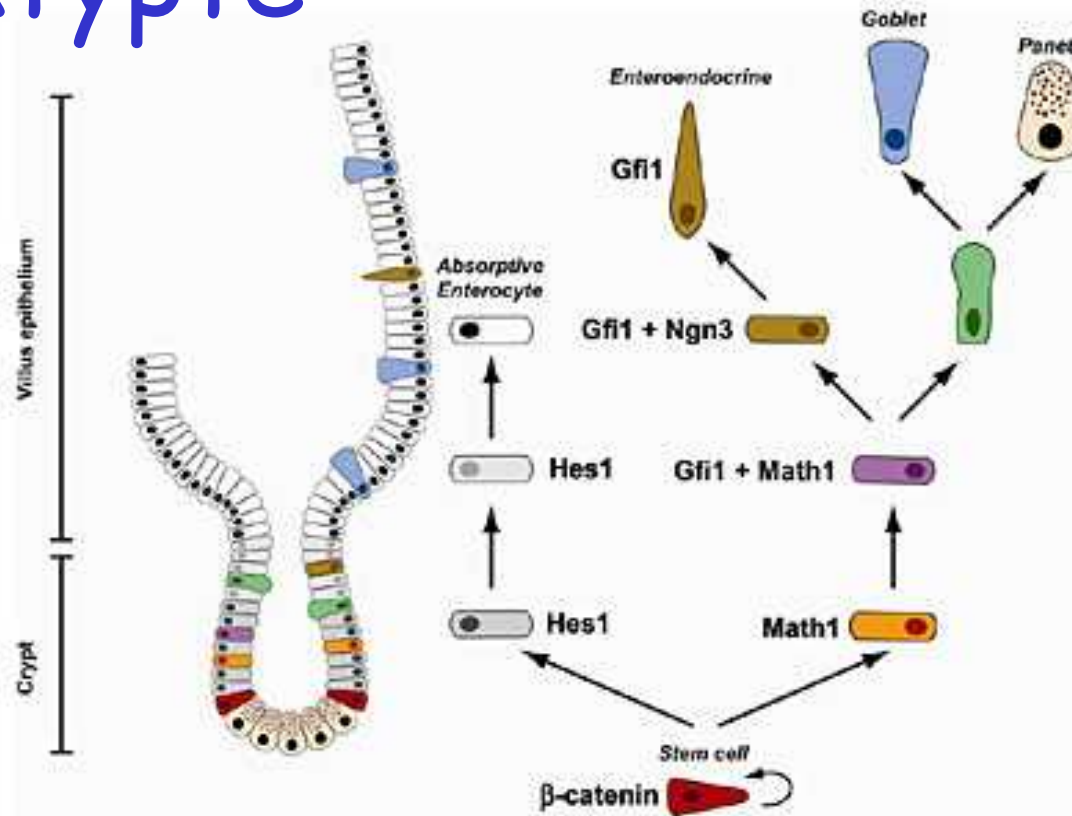
**Figure 16-6. Epithelial cells of the villus and crypt of Lieberkühn**



**Figure 16-7. Intestinal epithelium**



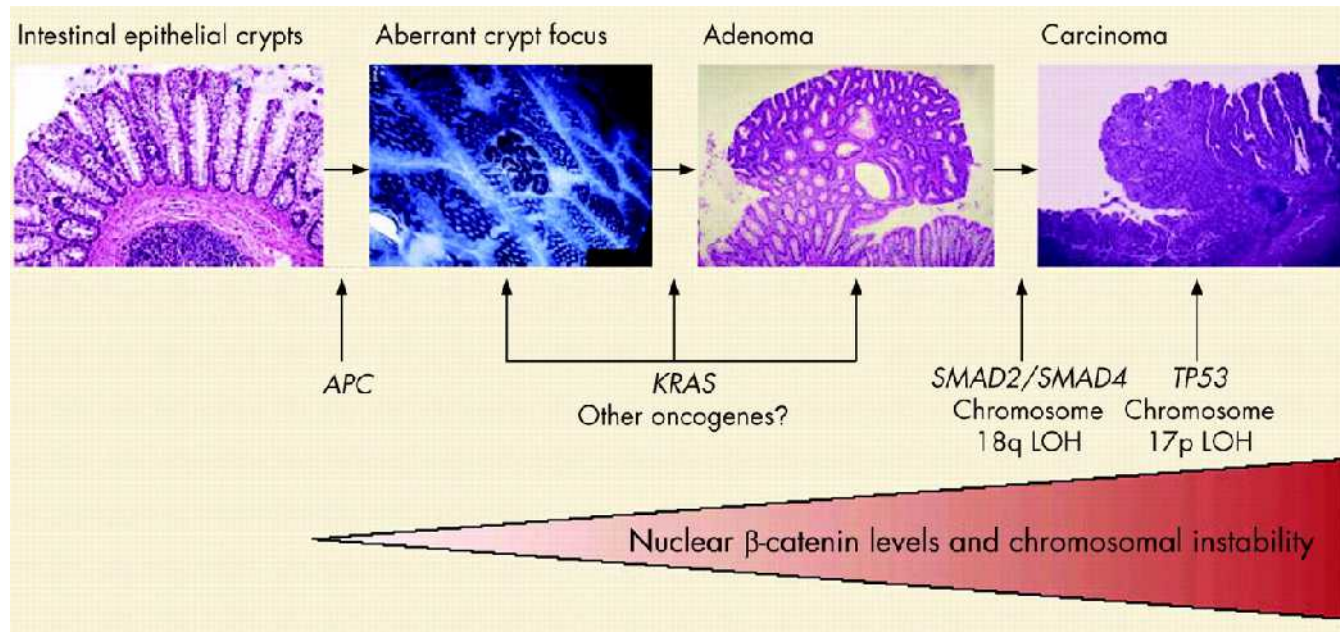
# Diferenciace kmenové buňky v ktyptě



<http://www.cincinnatichildrens.org/research/div/gastro/labs/hroyer/default.htm>



# Kmenová buňka a karcinom

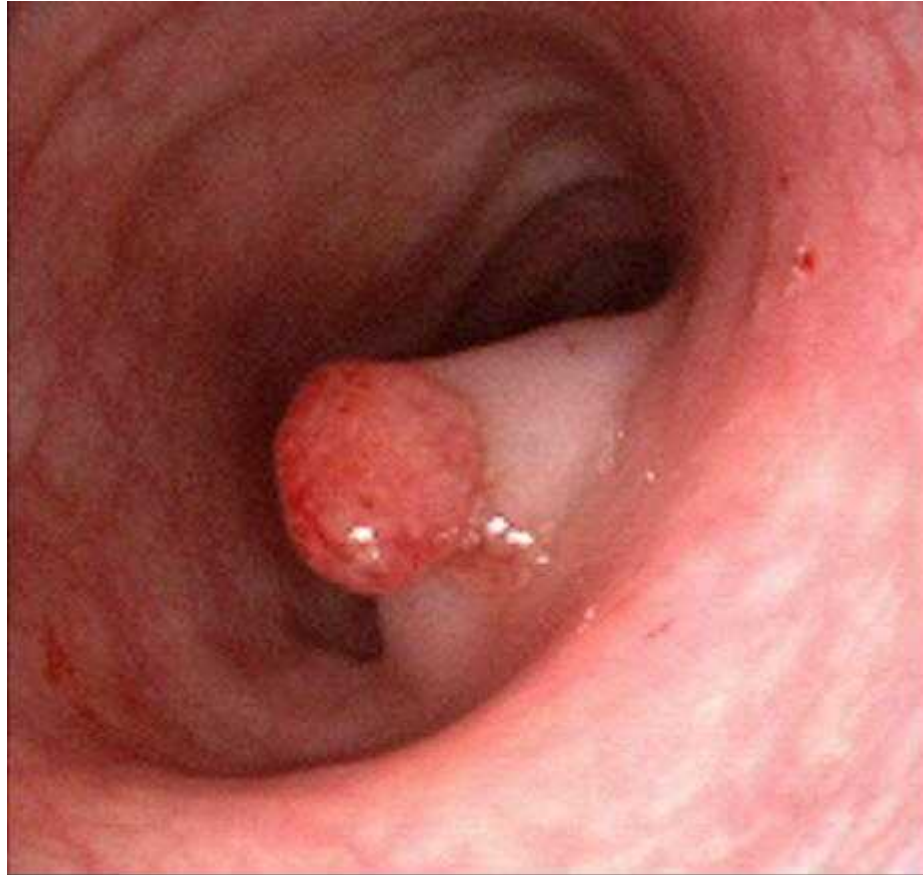


Clin Pathol 2008;61:164-171 doi:10.1136/jcp.2006.044610

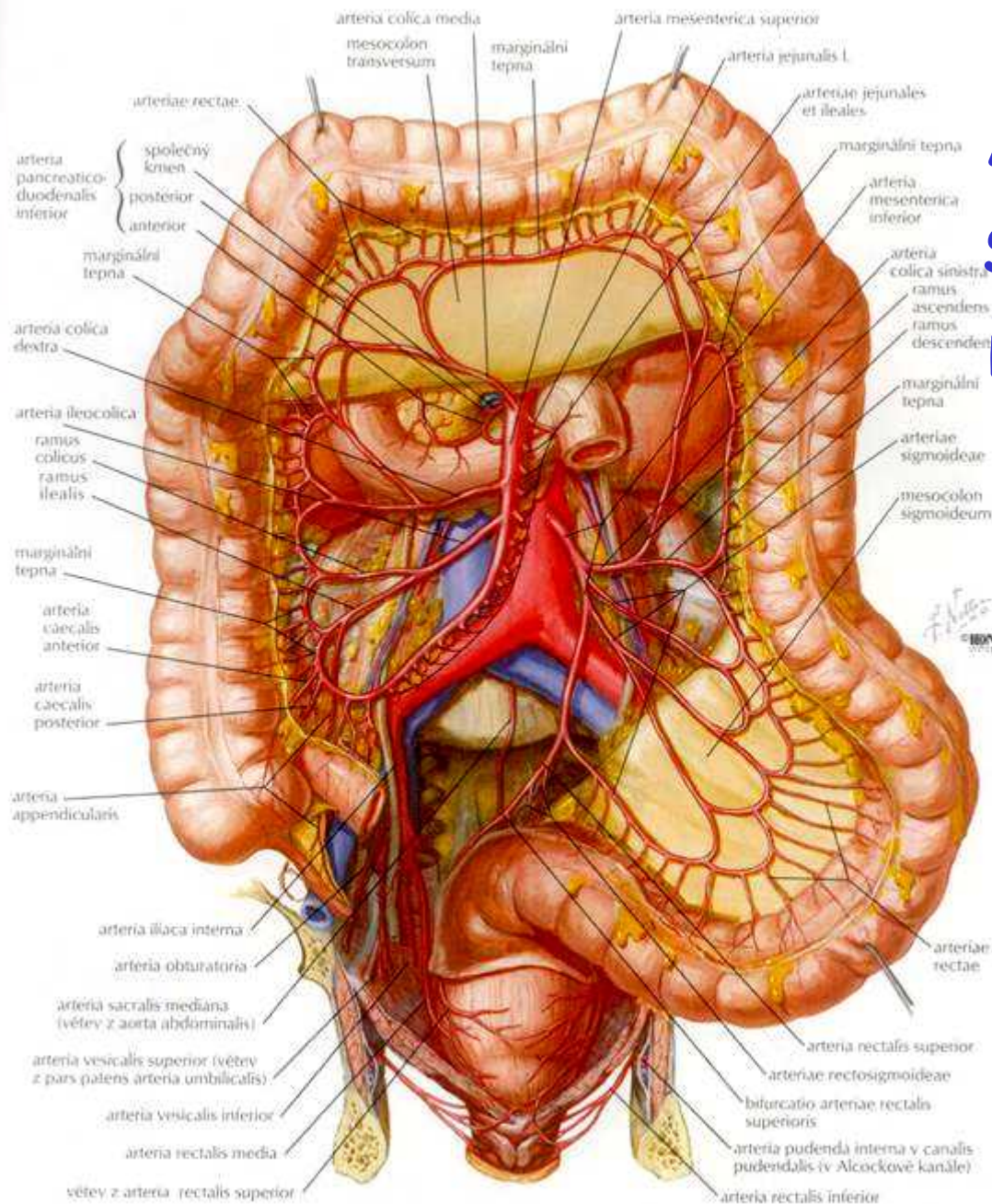
# Rectum-hemoroidy



# Sigmoideum-Karzinom



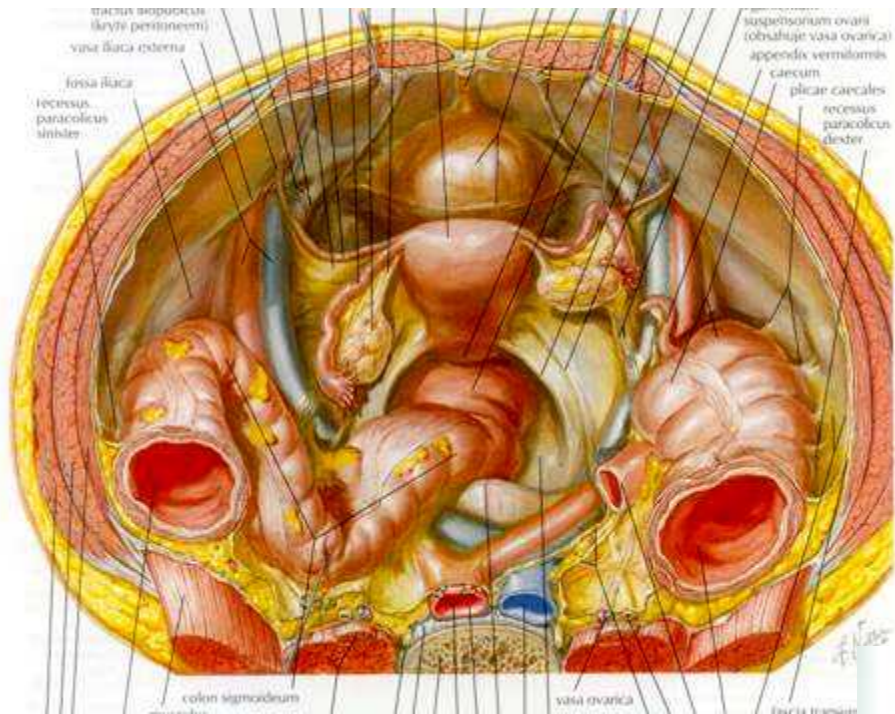




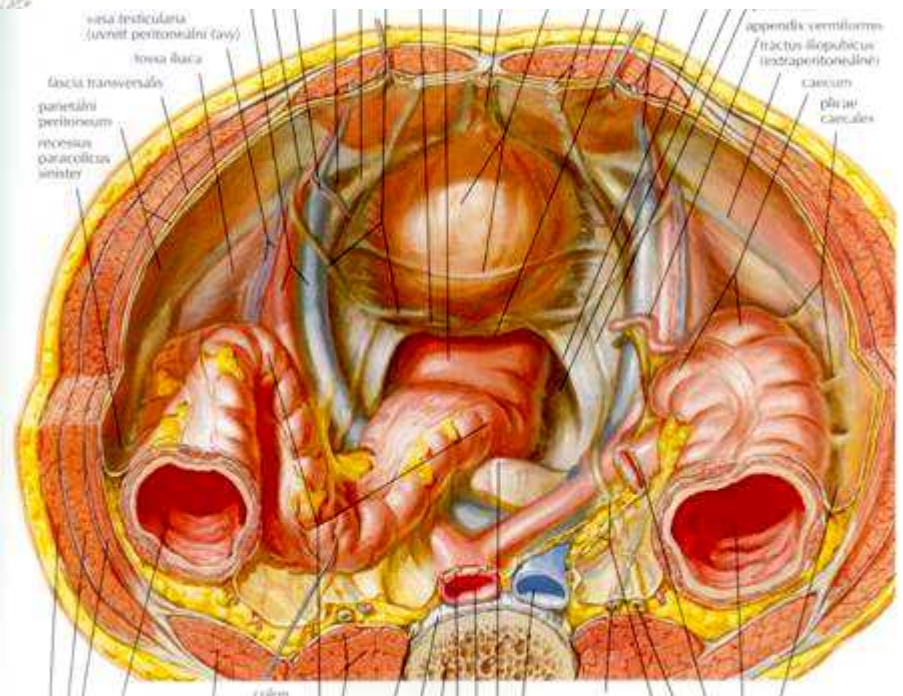
# A. mesenterica superior et inferior

F. H. Netter: Anatomický atlas člověka. Grada/Avicenum, Praha, 2003





# Topografie pánve



F. H. Netter: Anatomický atlas člověka.  
Grada/Avicenum, Praha, 2003