

Ondřej Naňka

Institute of Anatomy

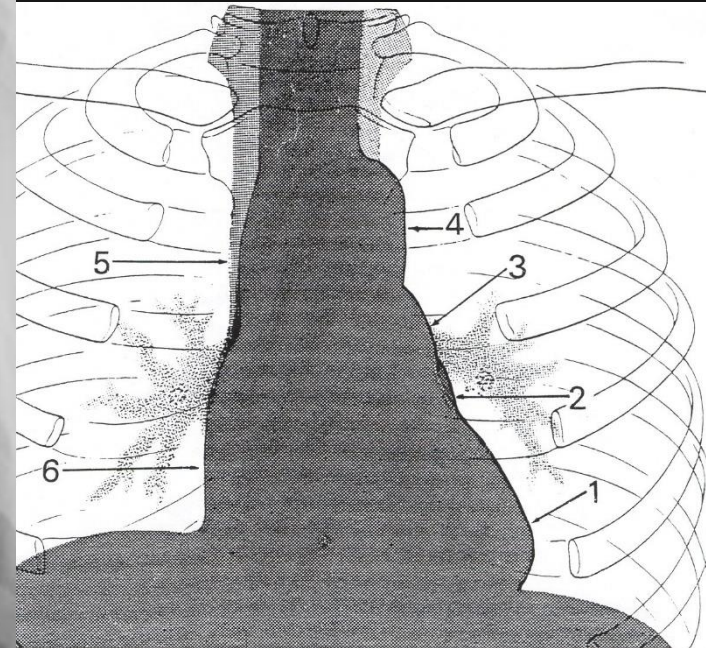
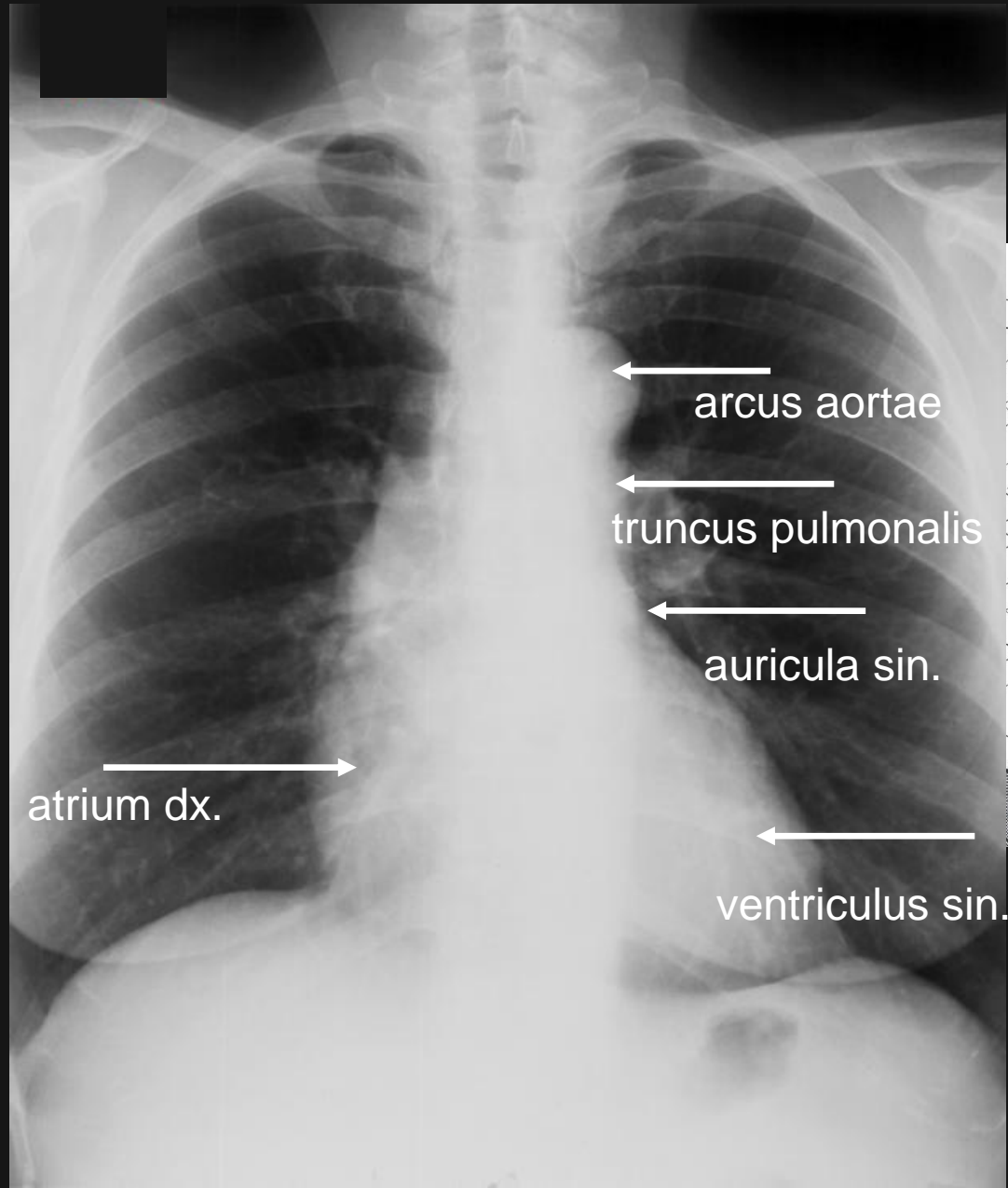


ZOBRAZOVACÍ METODY KARDIVASKULÁRNÍHO SYSTÉMU

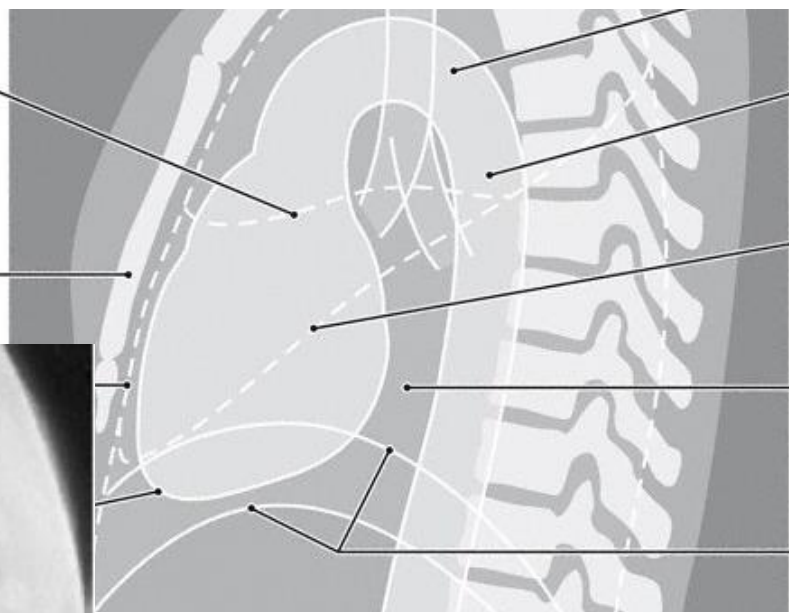
CARDIOVASCULAR SYSTEM
- IMAGING METHODS



RTG srdce / X ray of the heart – posteroanterior view

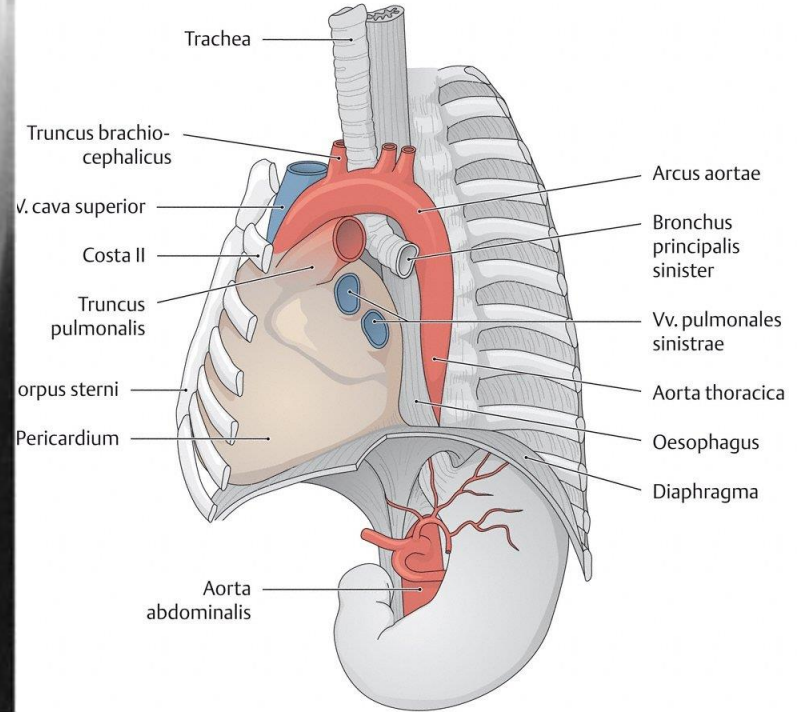


RTG srdce / X ray of the heart – posteroanterior view



Fissura horizontalis pulmonis dextri
Corpus sterni

Aorta, Pars descendens
Fissura obliqua pulmonis dextri
Holzknecht-Raum
linke und rechte Zwerchfellkuppel

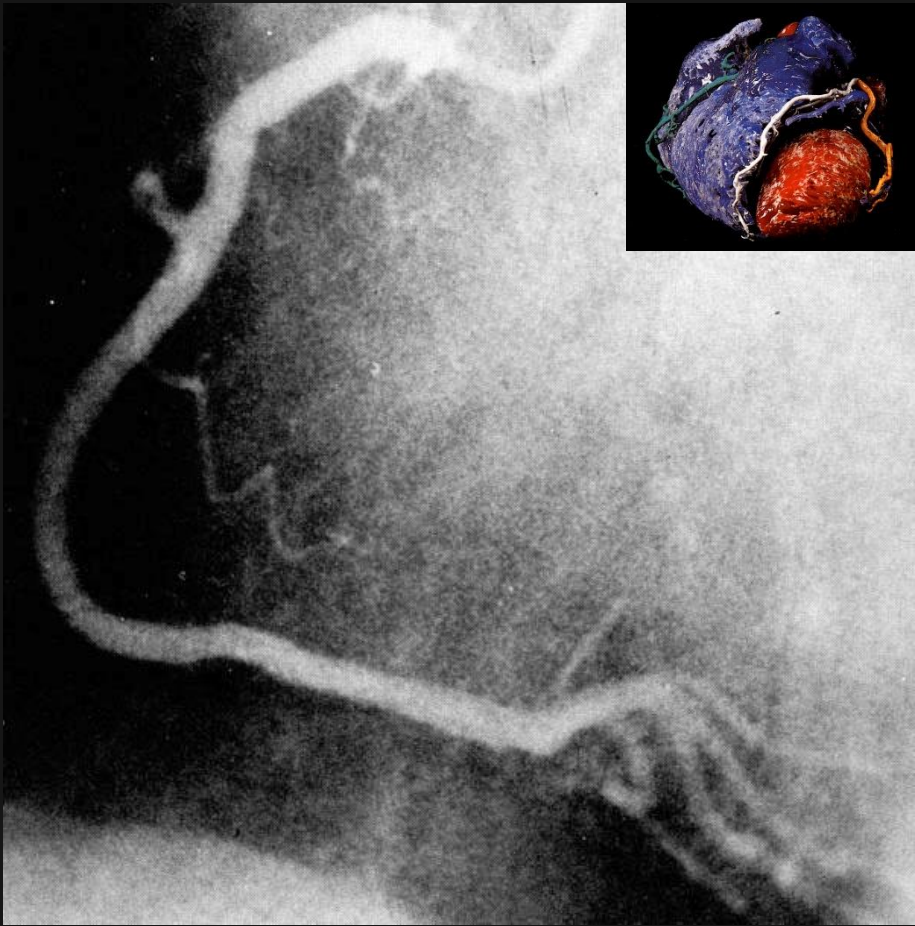


Trachea
Truncus brachiocephalicus
V. cava superior
Costa II
Truncus pulmonalis
Corpus sterni
Pericardium

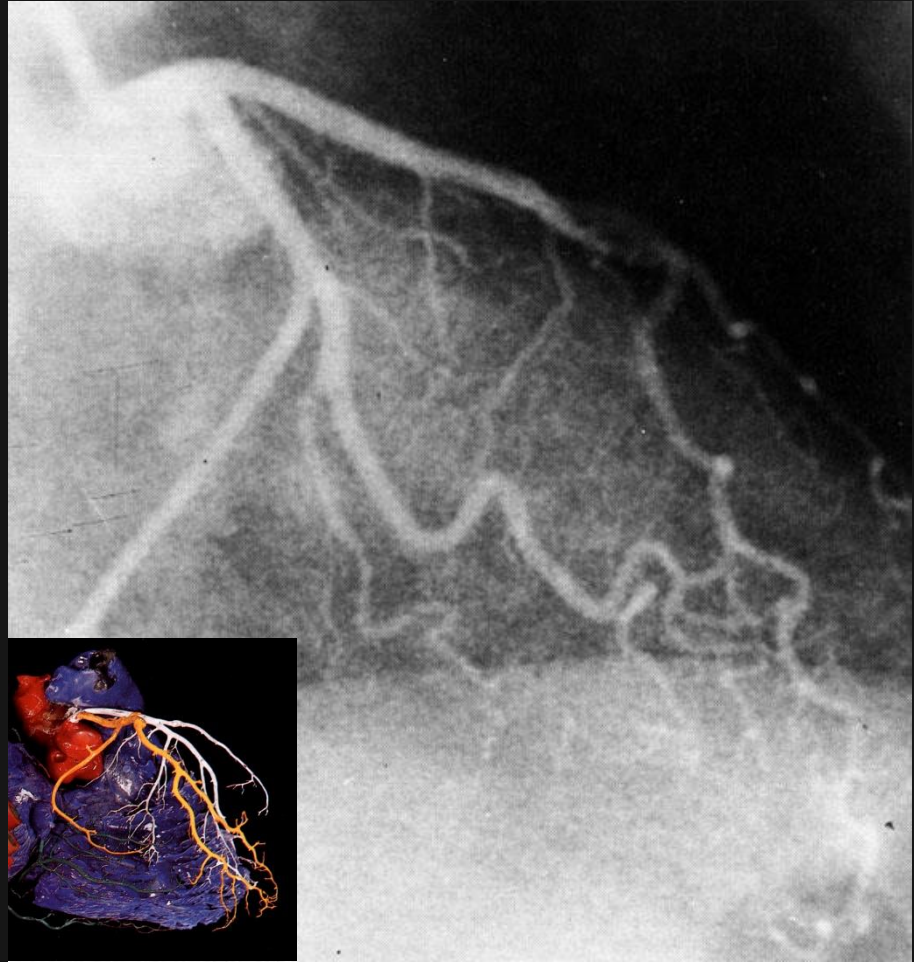
Arcus aortae
Bronchus principalis sinister
Vv. pulmonales sinistrae
Aorta thoracica
Oesophagus
Diaphragma

Aorta abdominalis

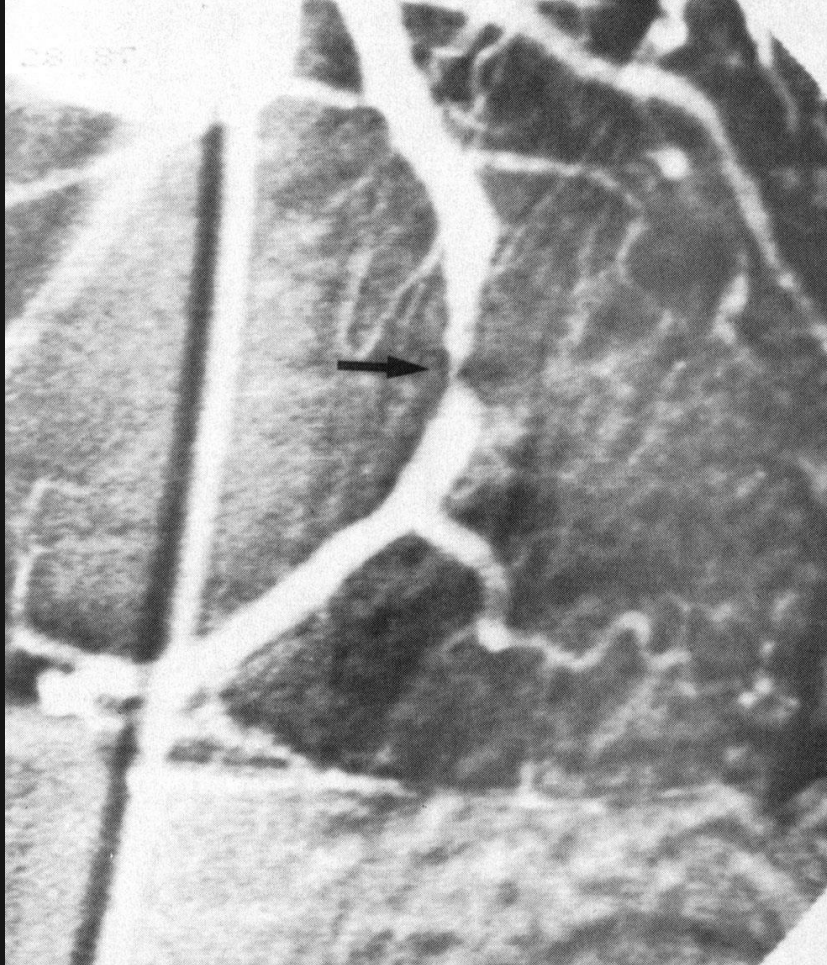
**Koronarografie pravé koronární tepny /
Coronarography of the right coronary
artery**



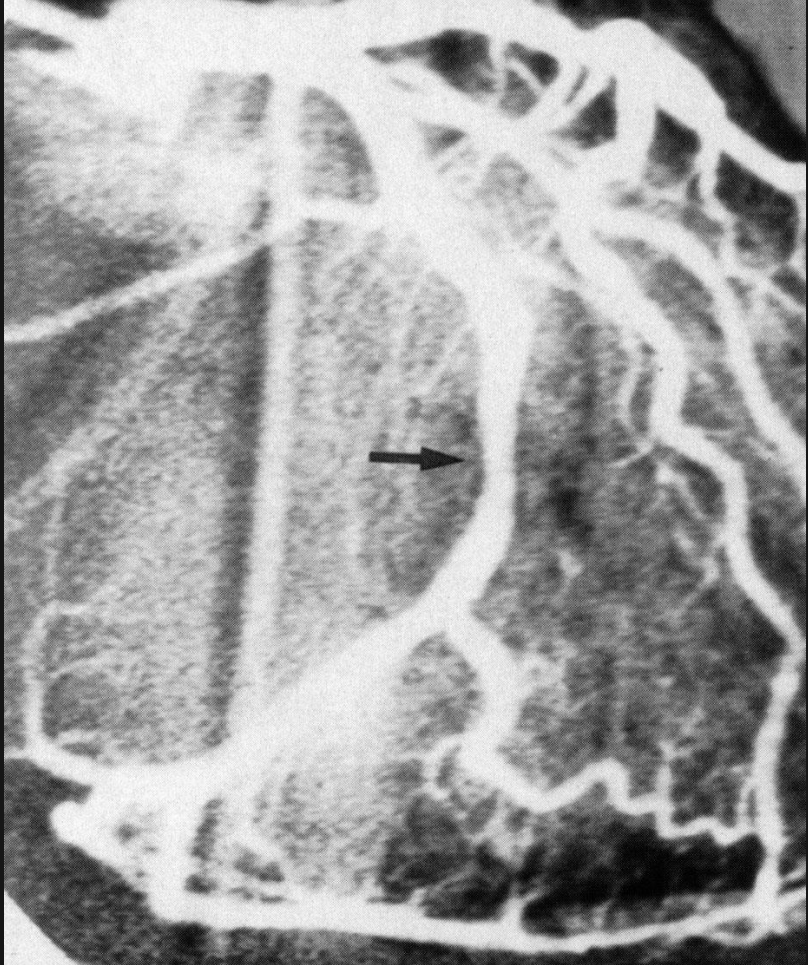
**Koronarografie levé koronární tepny /
Coronarography of the left coronary artery**



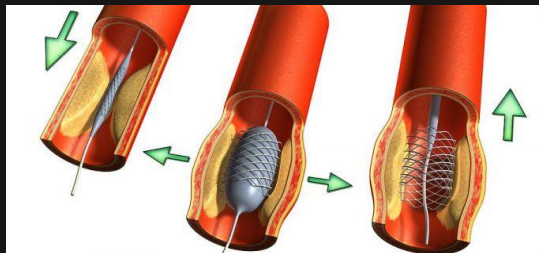
PTCA: Perkutánní Transluminální Coronární Angioplastika
Percutaneous Transluminal Coronary Angioplasty



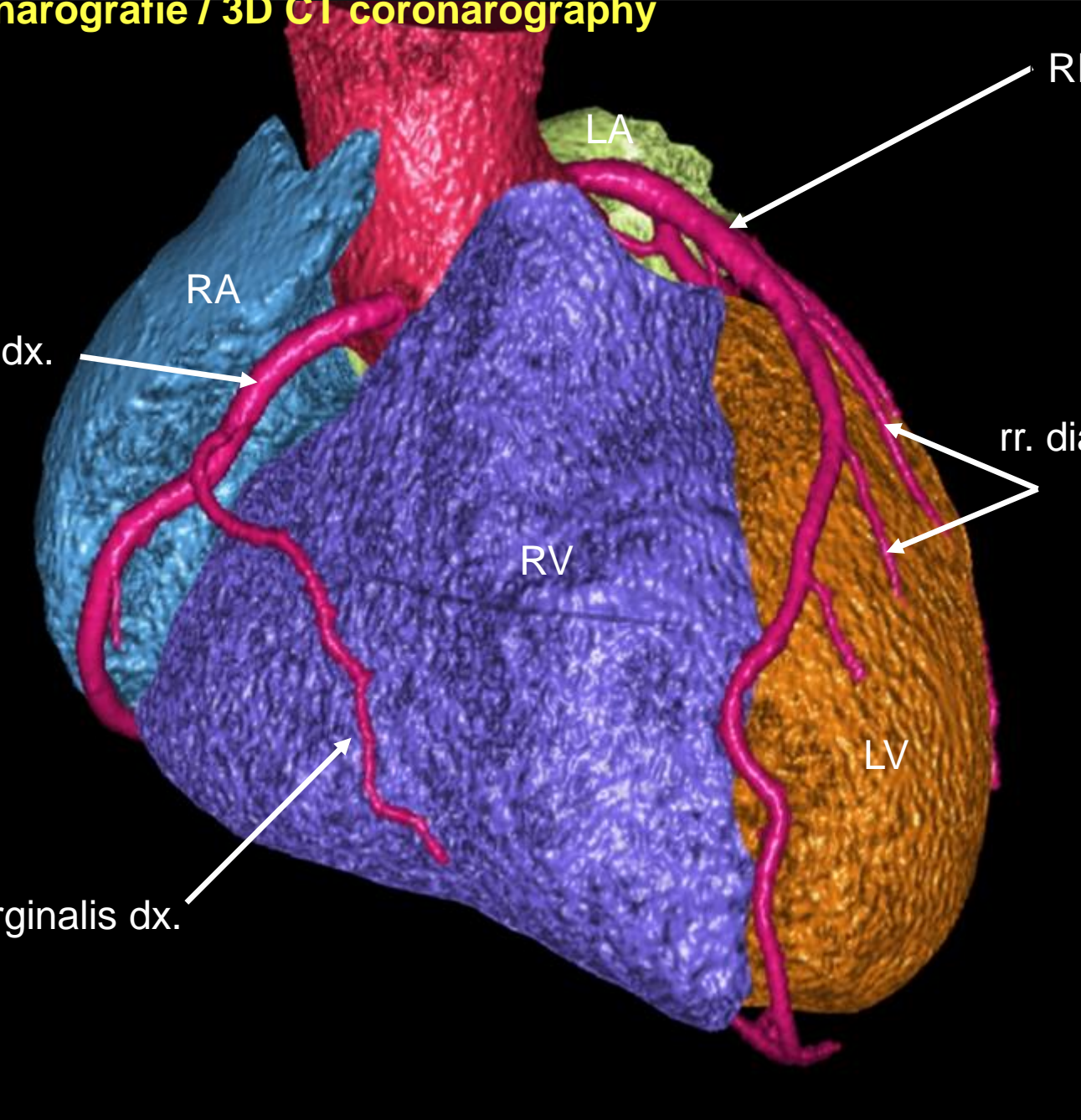
Stenoza RIA (od a. coronaria sinistra)
Znázorněno pomocí angiografie s
jodovou kontrastní látkou
Stenosis of anterior interventricular
ramus of the left coronary artery



Dilatace stenozy
metodou PTCA
Dilatation of stenosis
by PTCA



3D CT koronarografie / 3D CT coronarography



RIA

LA

RA

A. coronaria dx.

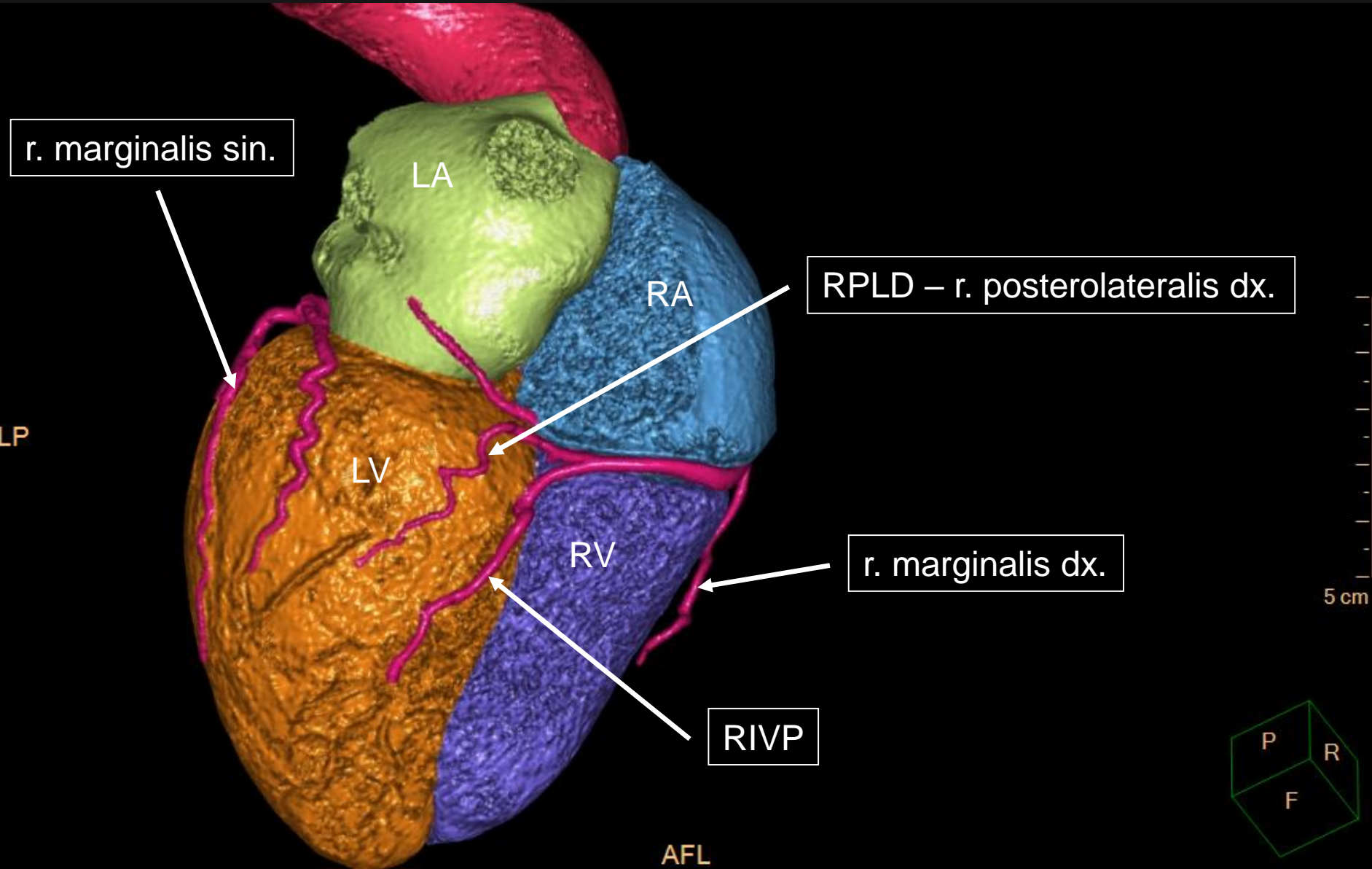
RV

rr. diagonales

LV

r. marginalis dx.

3D CT koronarografie / 3D CT coronarography



r. marginalis sin.

LA

RA

RPLD – r. posterolateralis dx.

LP

LV

RV

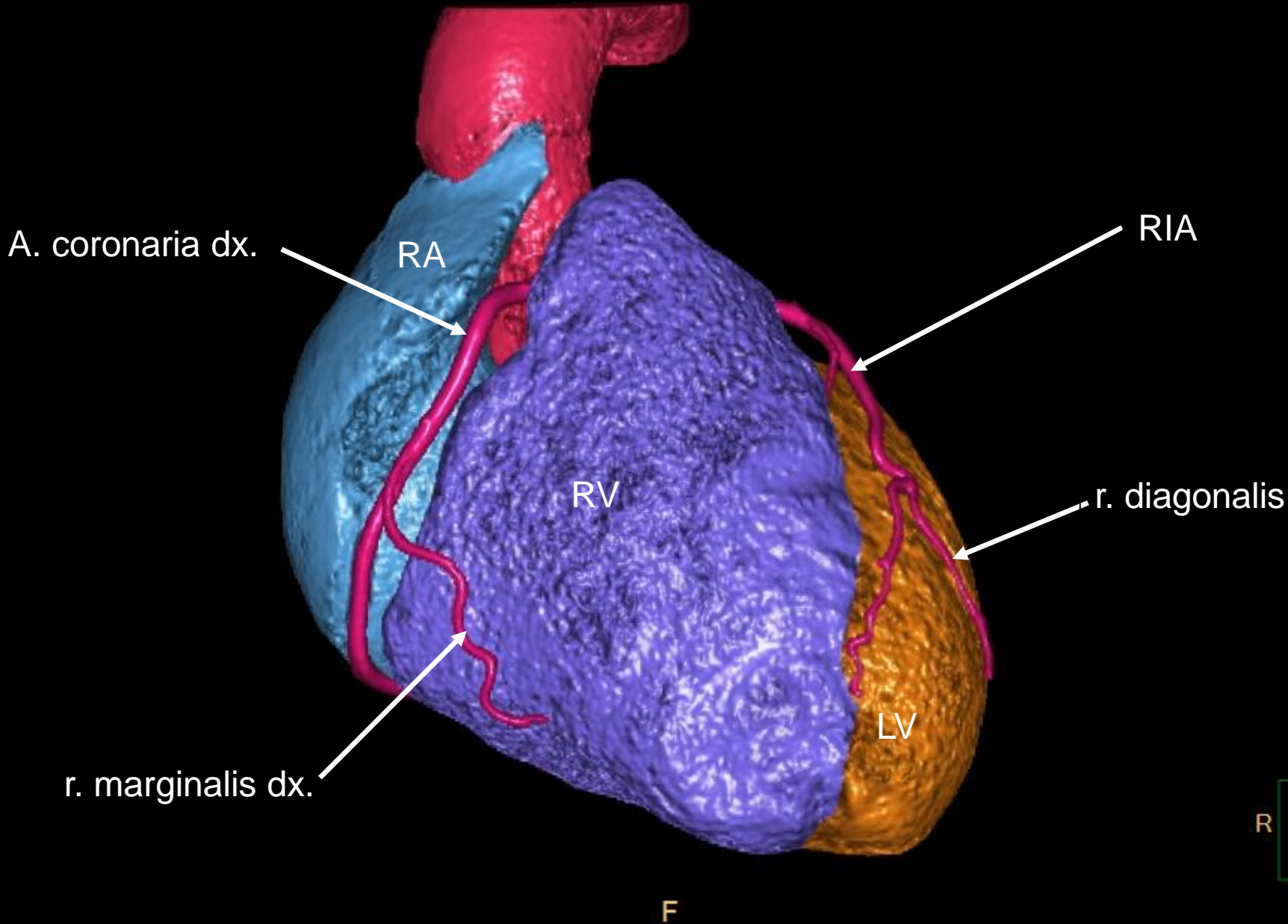
r. marginalis dx.

RIVP

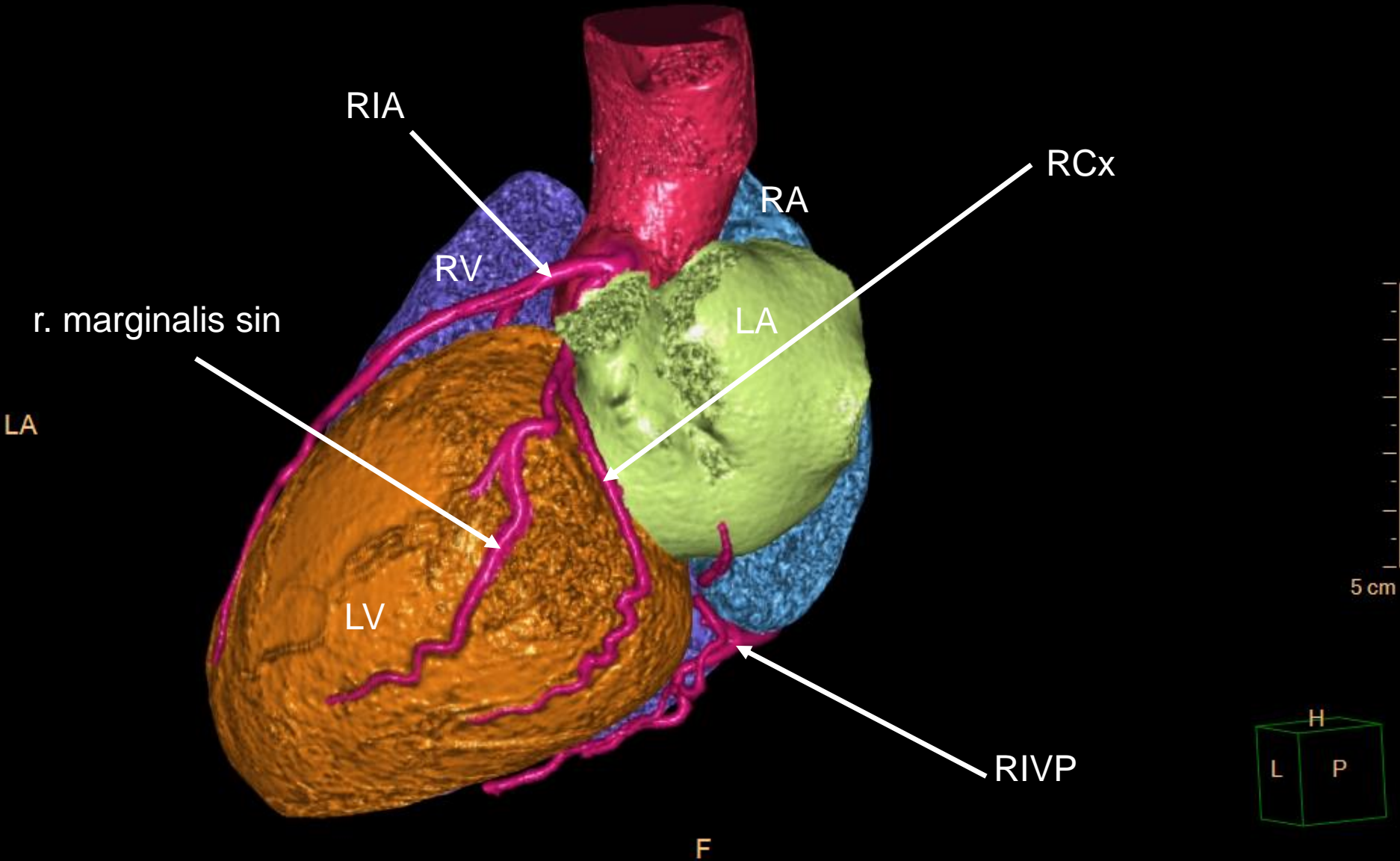
AFL



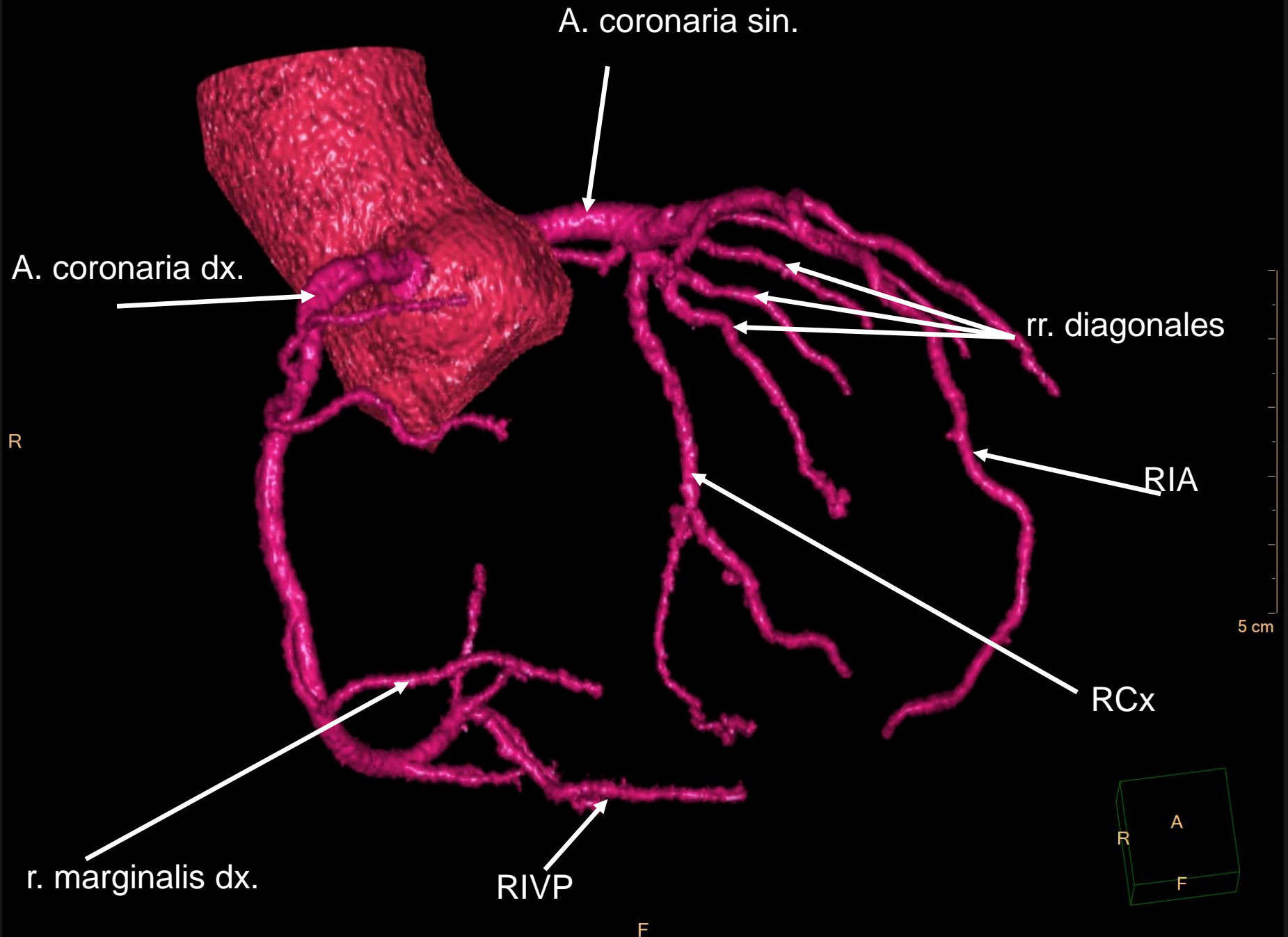
3D CT koronarografie / 3D CT coronarography



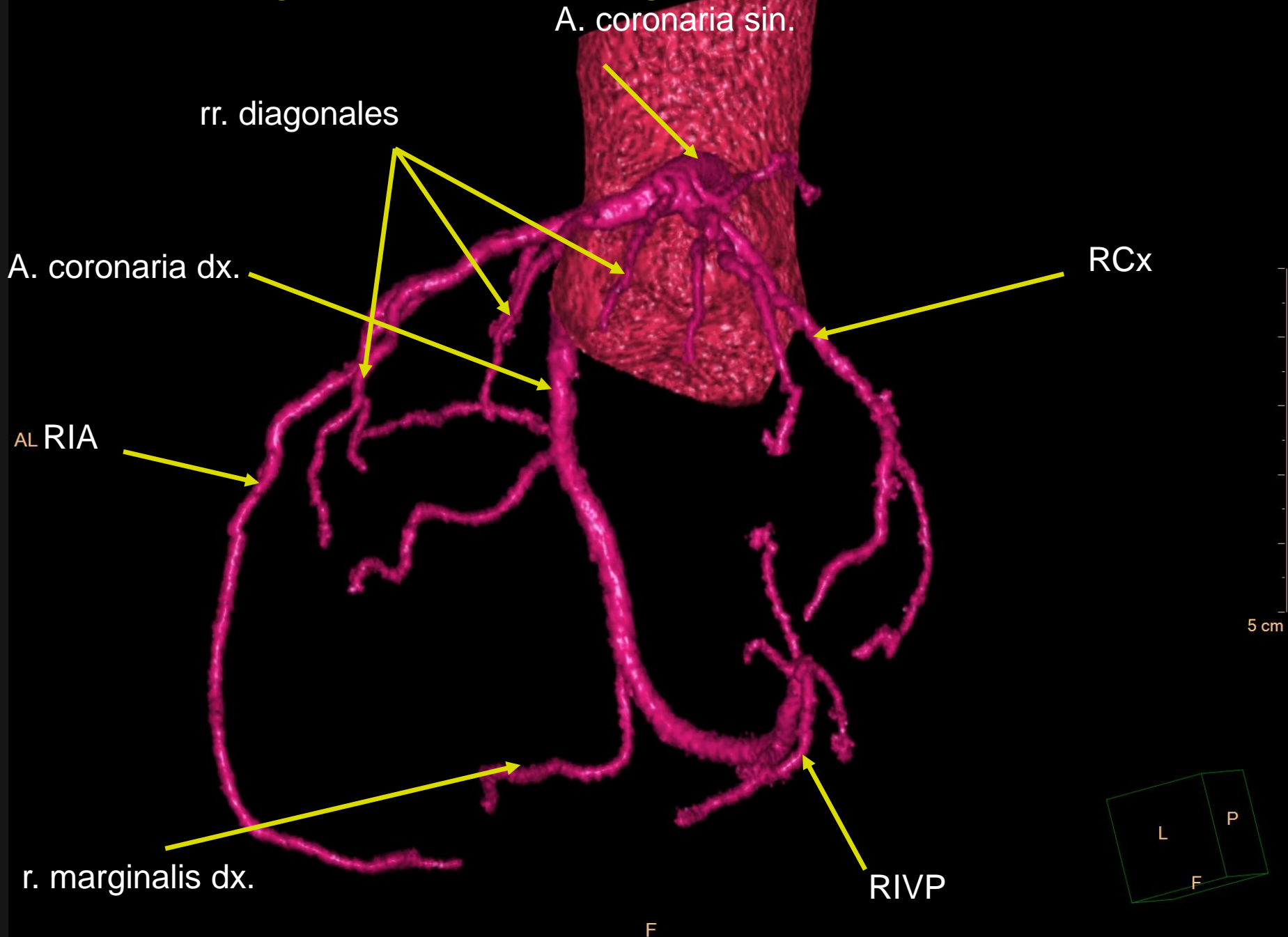
3D CT koronarografie / 3D CT coronarography



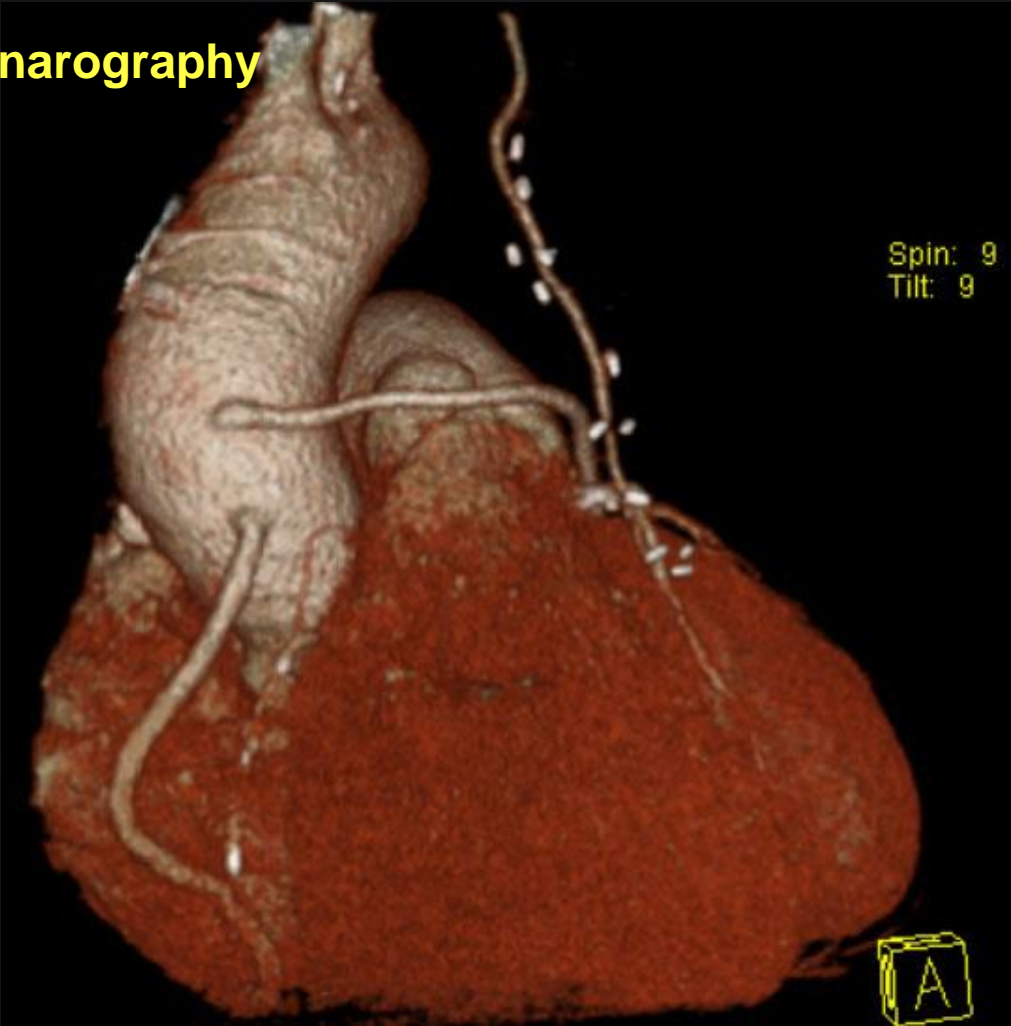
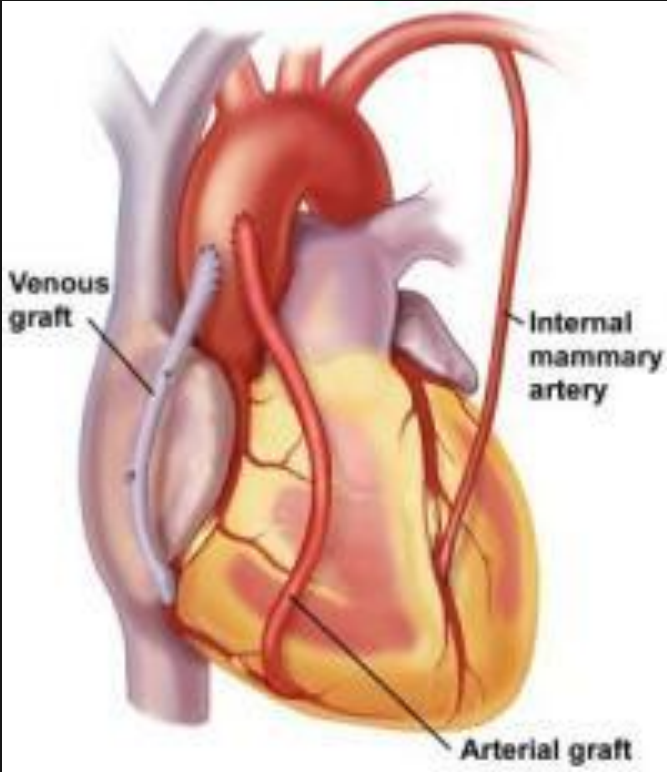
3D CT koronarografie / 3D CT coronarography

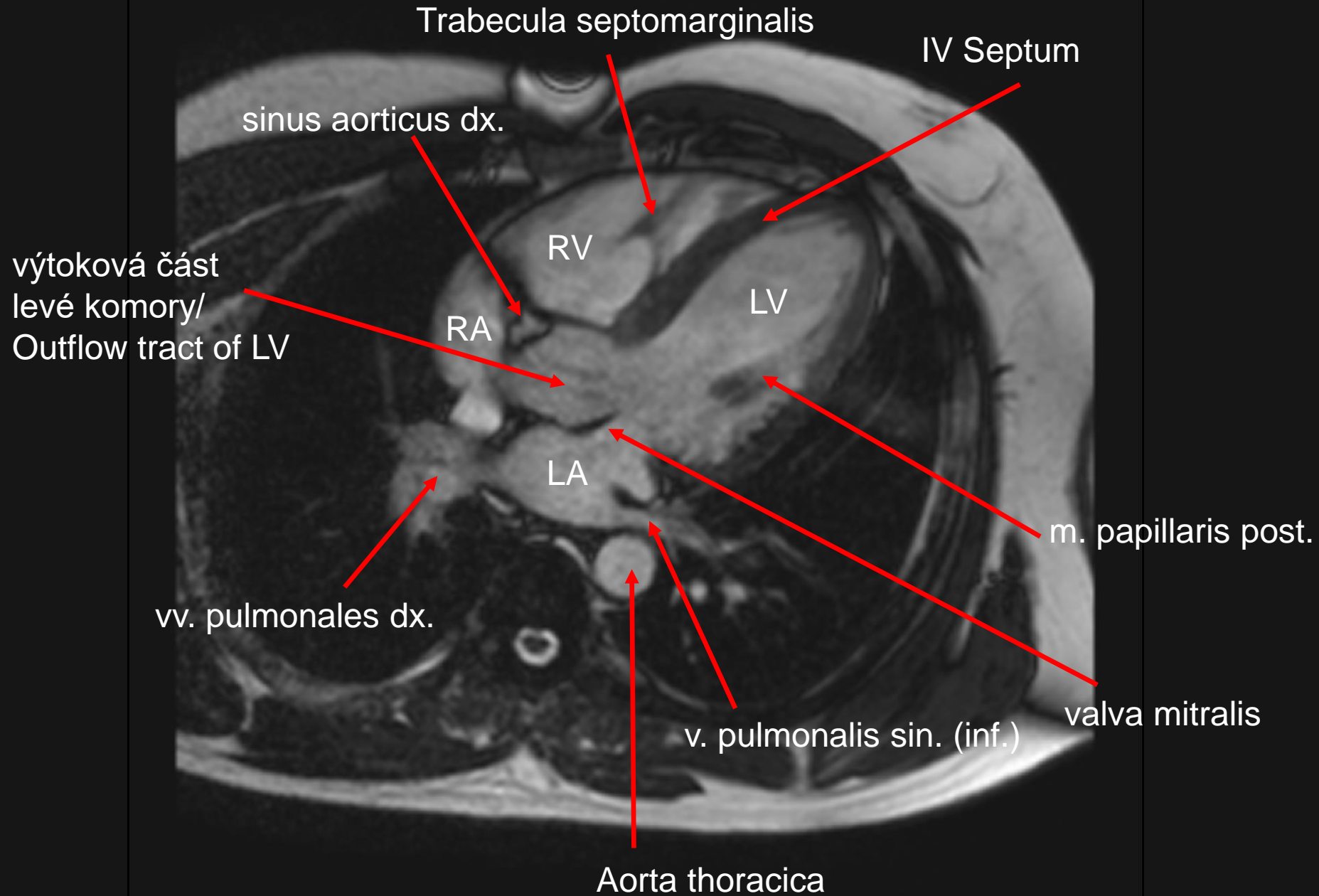


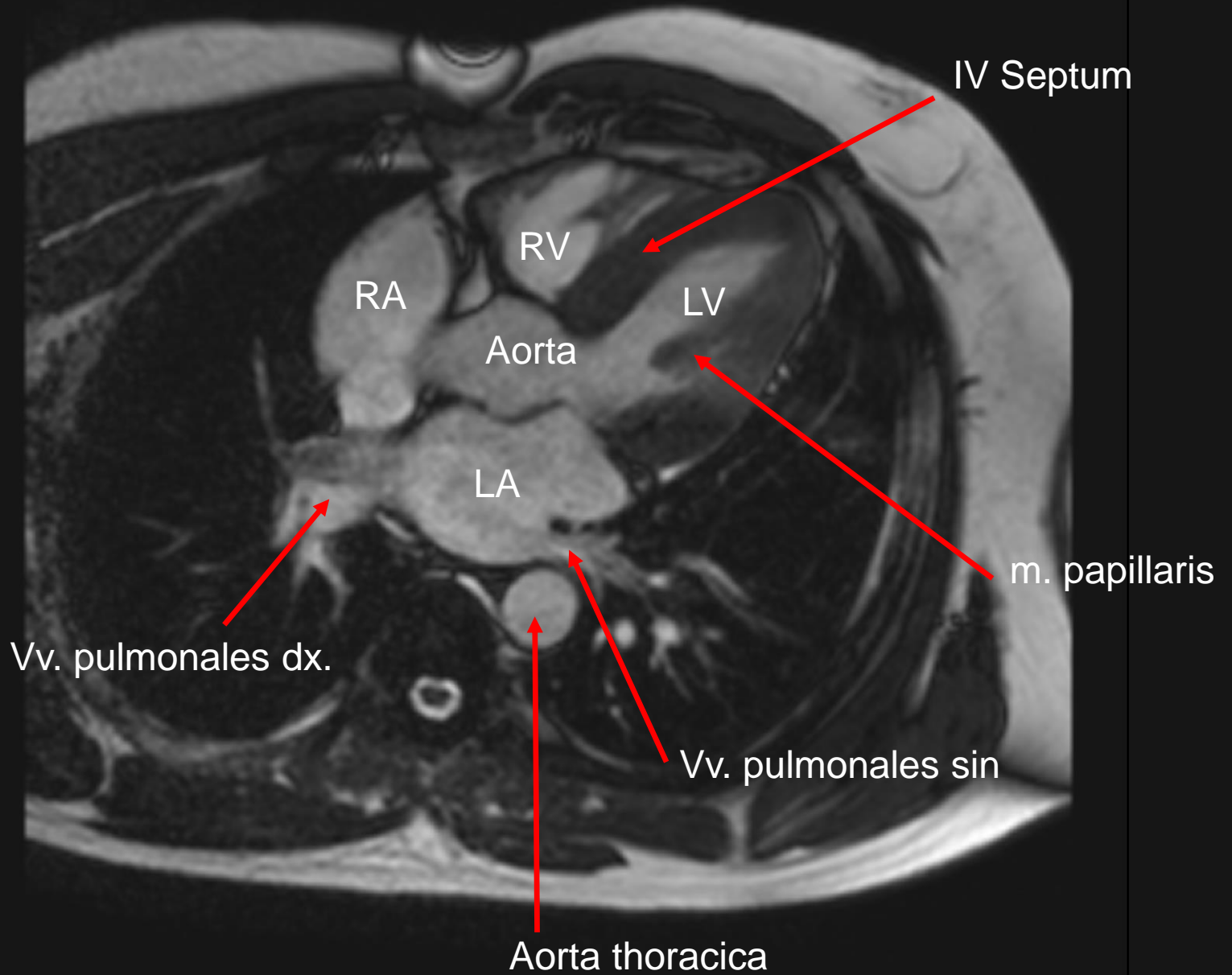
3D CT koronarografie / 3D CT coronarography



Aortocoronary bypass 3D CT koronarografie / 3D CT coronarography







MRI srdce / MRI of the heart

2komorová projekce – dlouhá osa 2-Chamber Vertical Long Axis

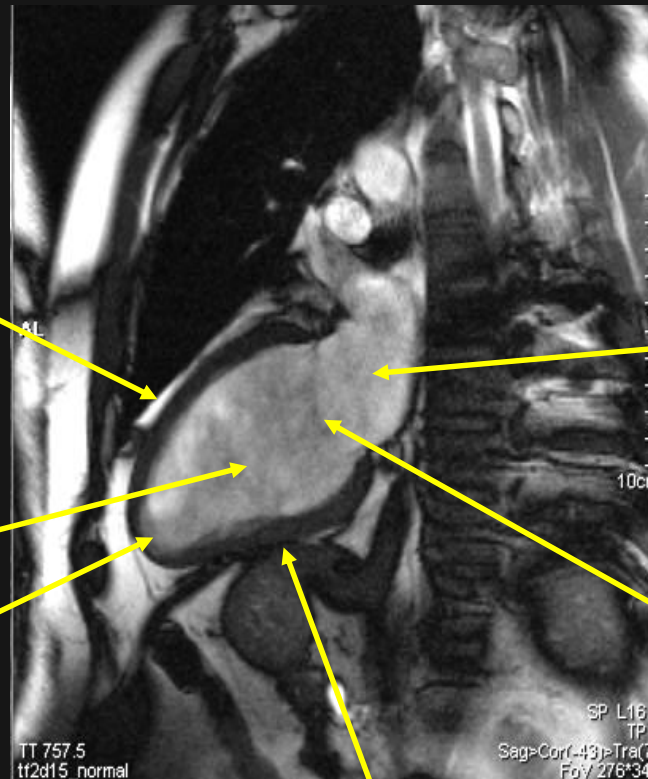
LV - Anterior Wall

Left Atrium

Left Ventricle Cavity

Apex

Mitral Valve



LV Posterior Wall

**Výtokový trakt levé komory
Aortic Outflow Tract**

Ascending Aorta

Pulmonary Artery

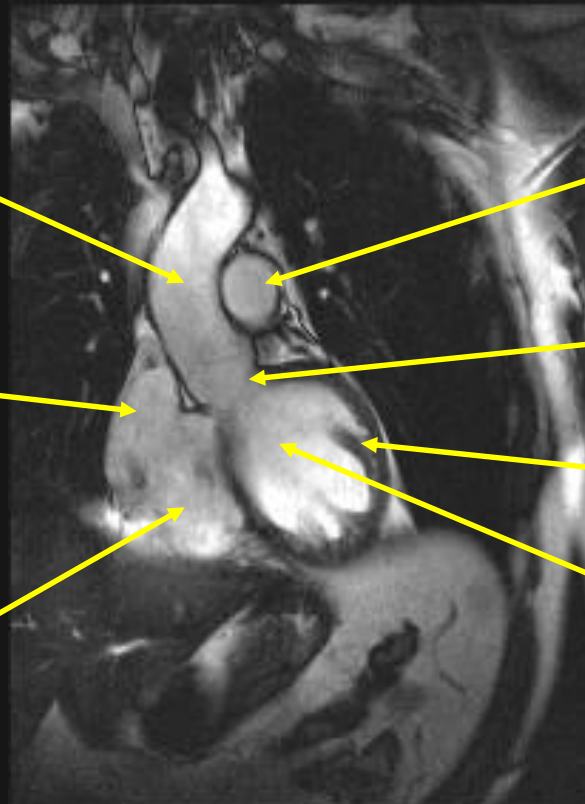
Right Atrium

Aortic Valve

Right Ventricle

Papillary Muscle

Left Ventricle



MRI srdce / MRI of the heart

Pravá komora – vtoková část Right Ventricular Inflow Tract

Ascending Aorta

Pulmonary Outflow Tract

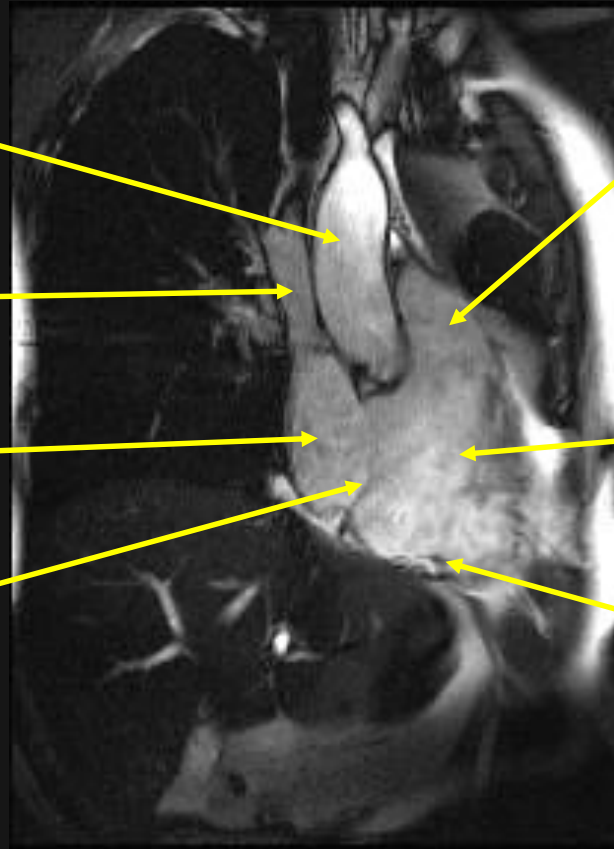
Superior Vena Cava

Right Atrium

Right Ventricle

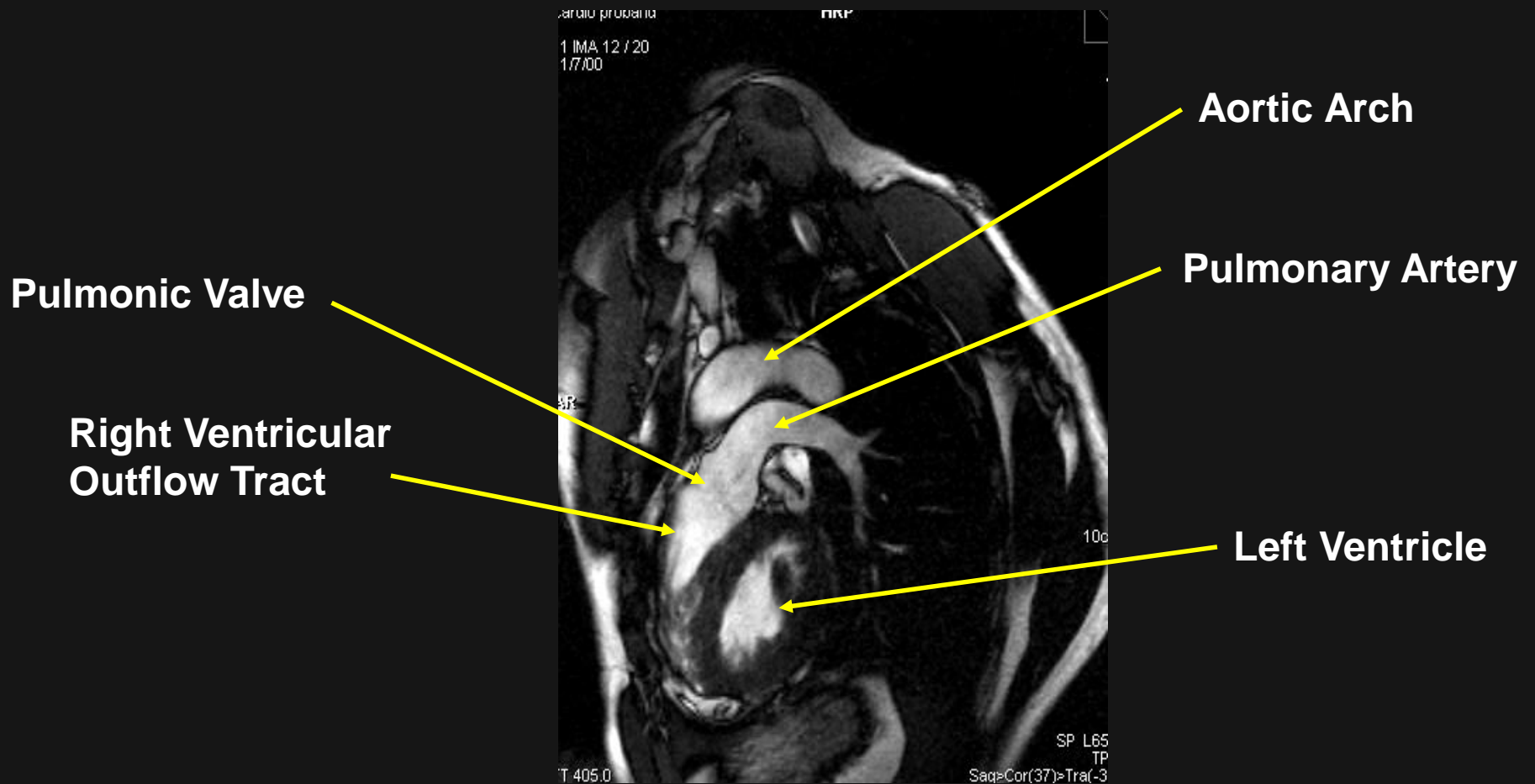
Tricuspid Valve

Posterior RV Wall



MRI srdce / MRI of the heart

Pravá komora – výtokový trakt Right Ventricular Outflow Tract



a. temporalis superficialis

a. occipitalis

a. vertebralis

a. carotis externa

a. carotis interna

a. vertebralis

a. spheno-palatina

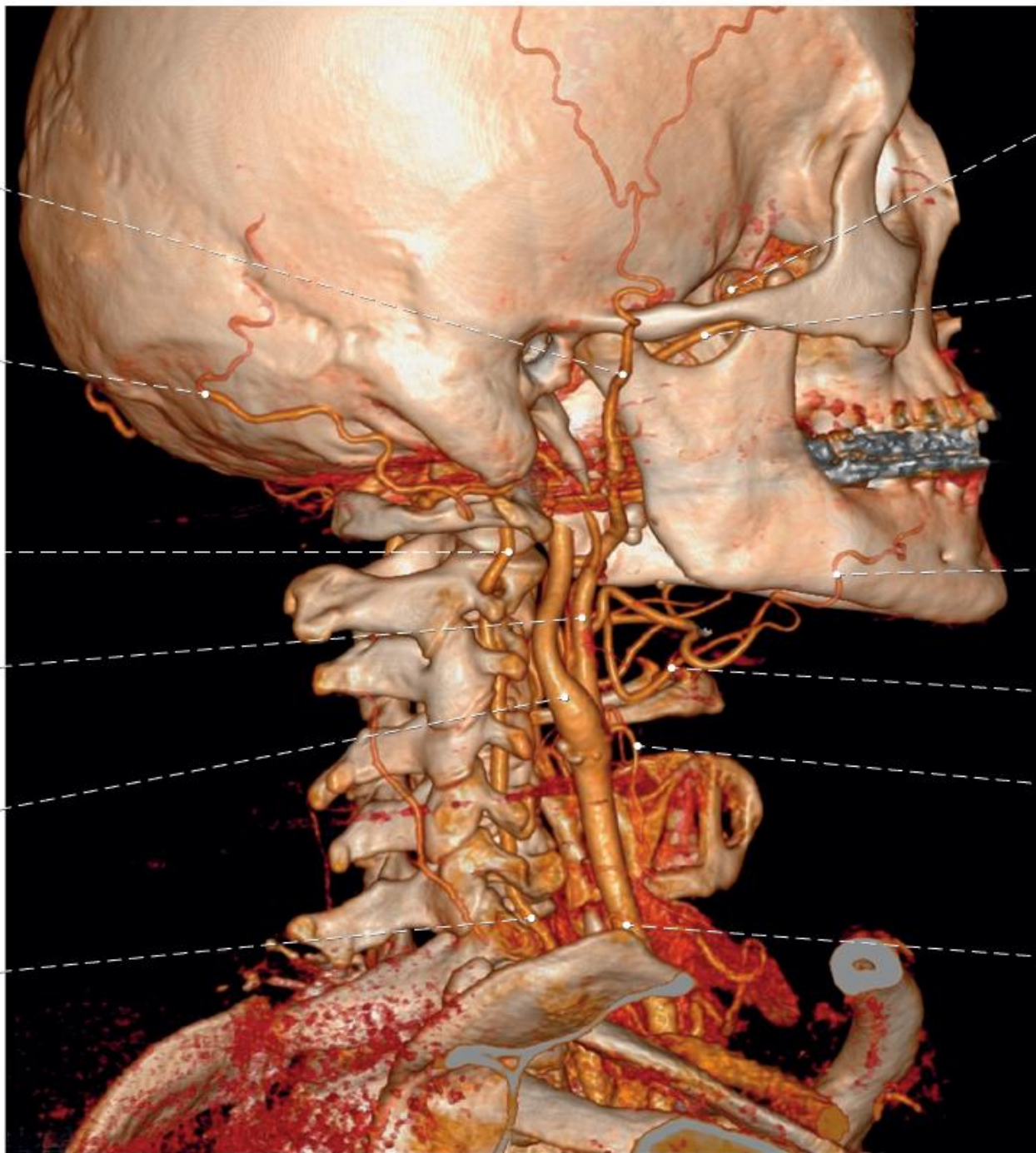
a. maxillaris

a. facialis

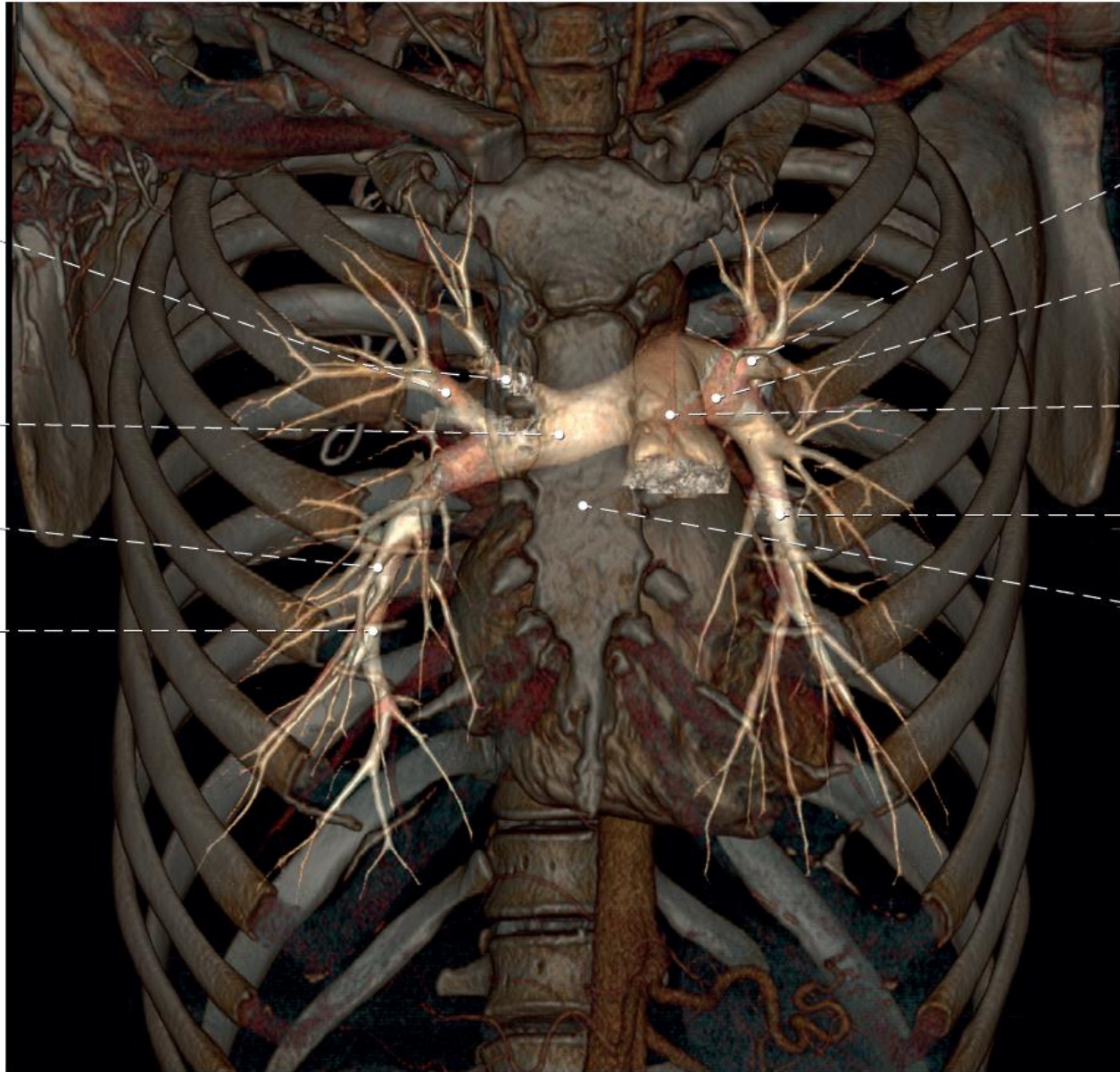
a. lingualis

a. thyroidea superior

a. carotis communis



a



aa. lobares superiores dx.

a. pulmonalis dx.

a. lobaris media

a. lobares inferiores dx.

aa. lobares superiores sin.

a. pulmonalis sin.

truncus pulmonalis

a. lobares inferiores sin.

corpus sterni

b

a. carotis
communis dx.

truncus
thyrocervicalis

a. subclavia dx.,
pars extrascalenica

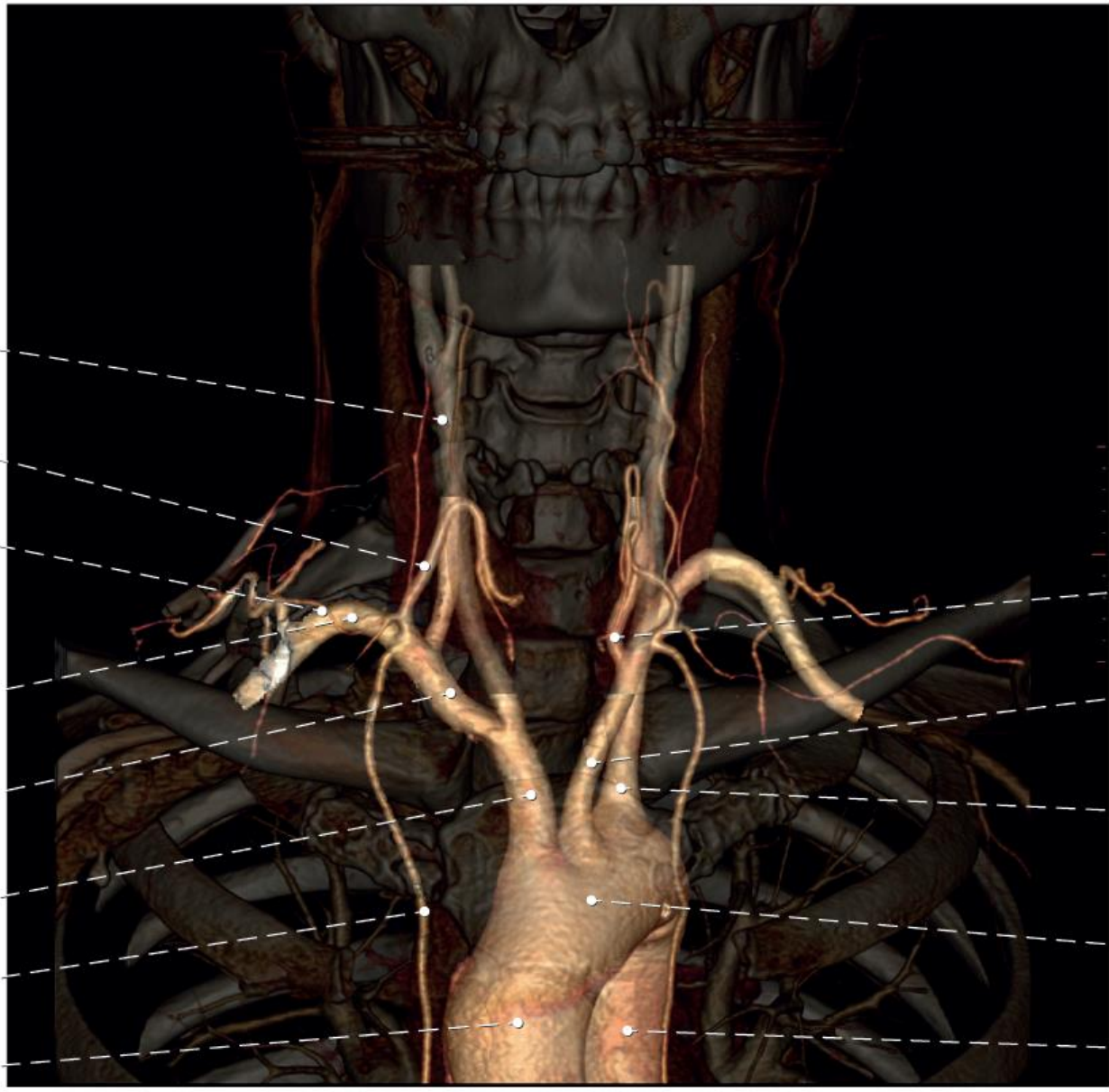
a. subclavia dx.,
pars interscalenica

a. subclavia dx.,
pars intrascalenica

truncus
brachiocephalicus

a. thoracica interna dx.

aorta ascendens



a. vertebralis

a. carotis
communis sin.

a. subclavia sin.

arcus aortae

aorta thoracica

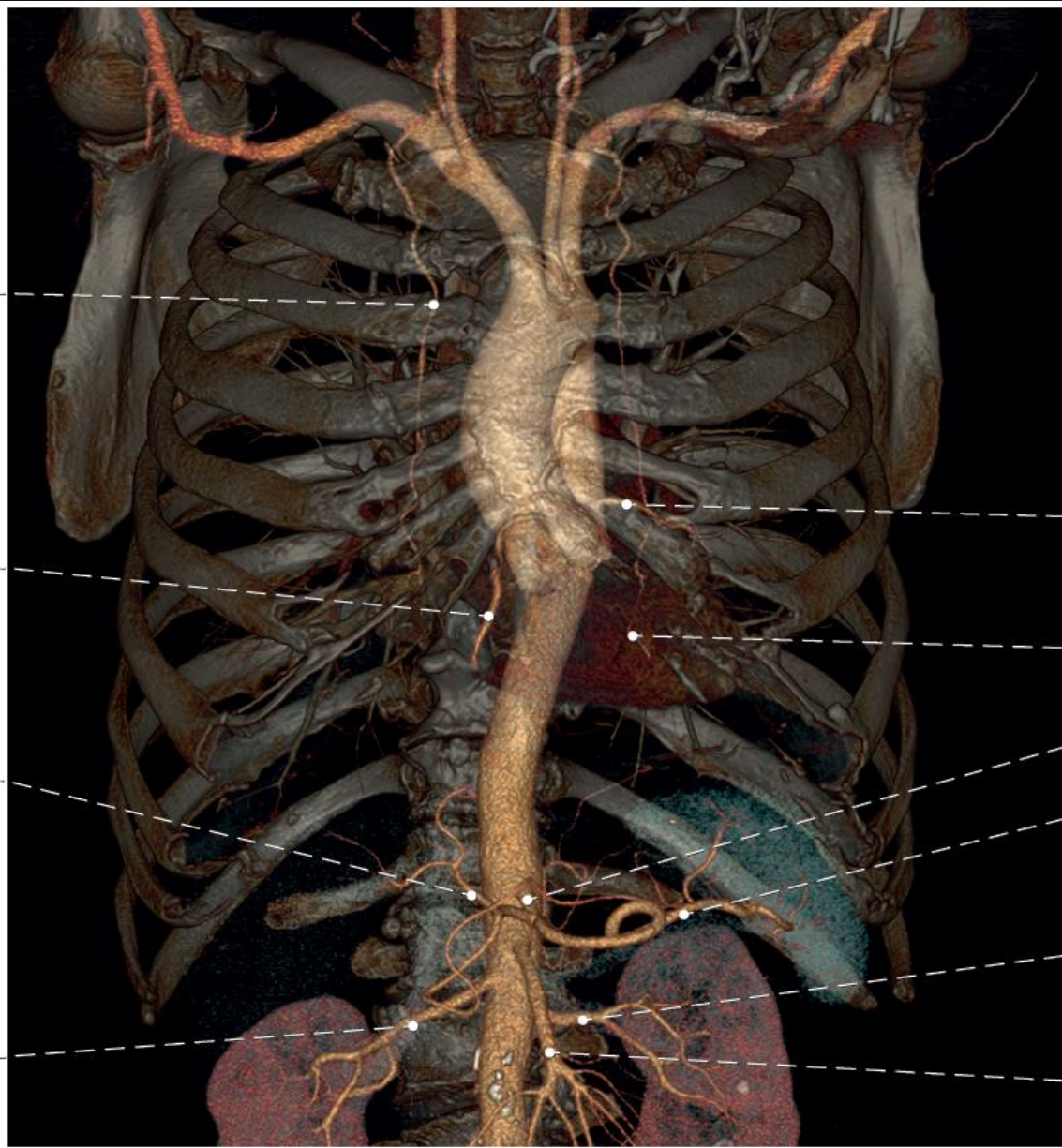
0

a. thoracica interna dx.

a. coronaria dx.

a. hepatica communis

a. renalis dx.



a. coronaria sin.

cor

truncus coeliacus

a. lienalis

a. renalis sin.

a. mesenterica superior

truncus brachiocephalicus

a. thoracica interna

aorta ascendens

a. coronaria sin.

r. interventricularis ant.

truncus coeliacus

a. mesenterica superior



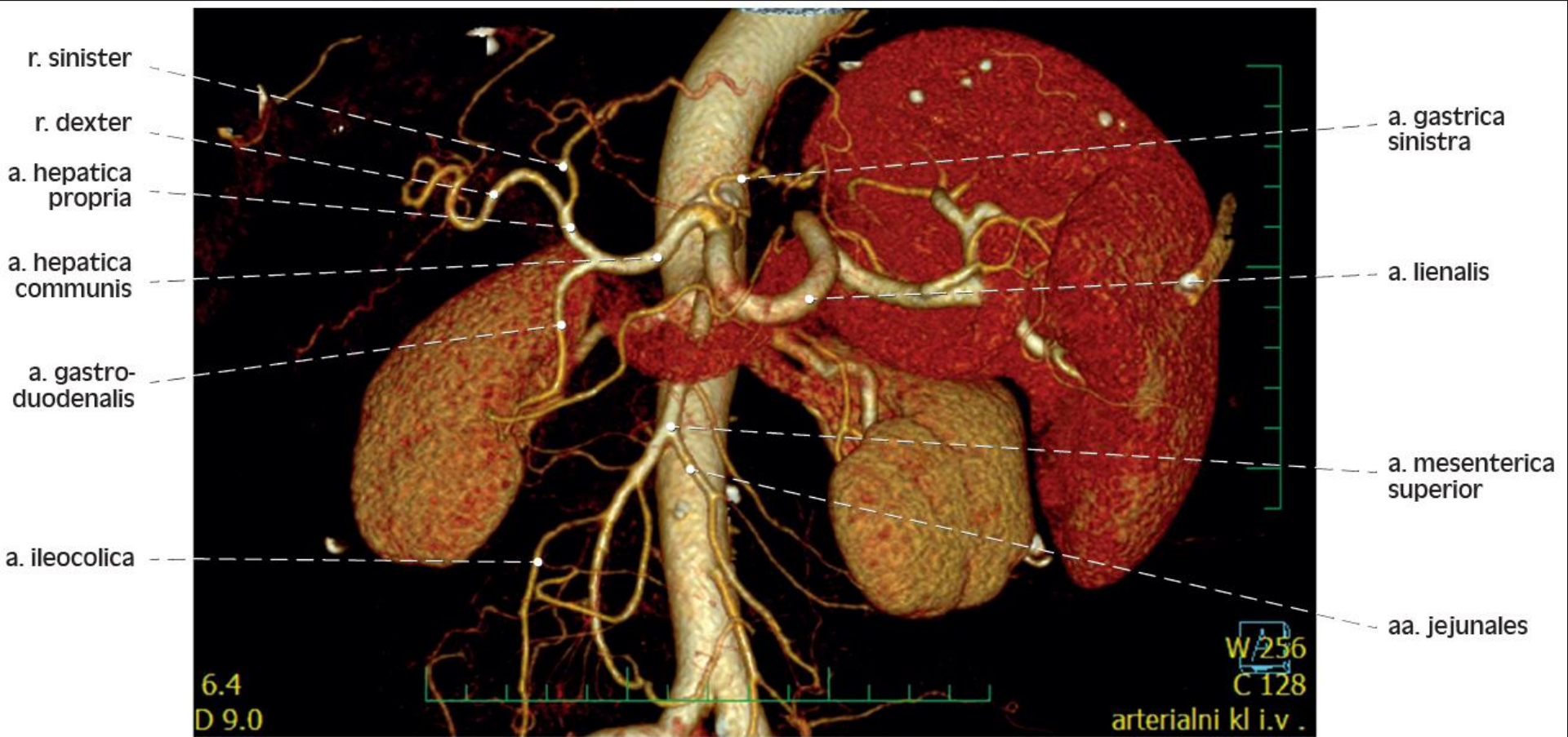
a. carotis communis sin.

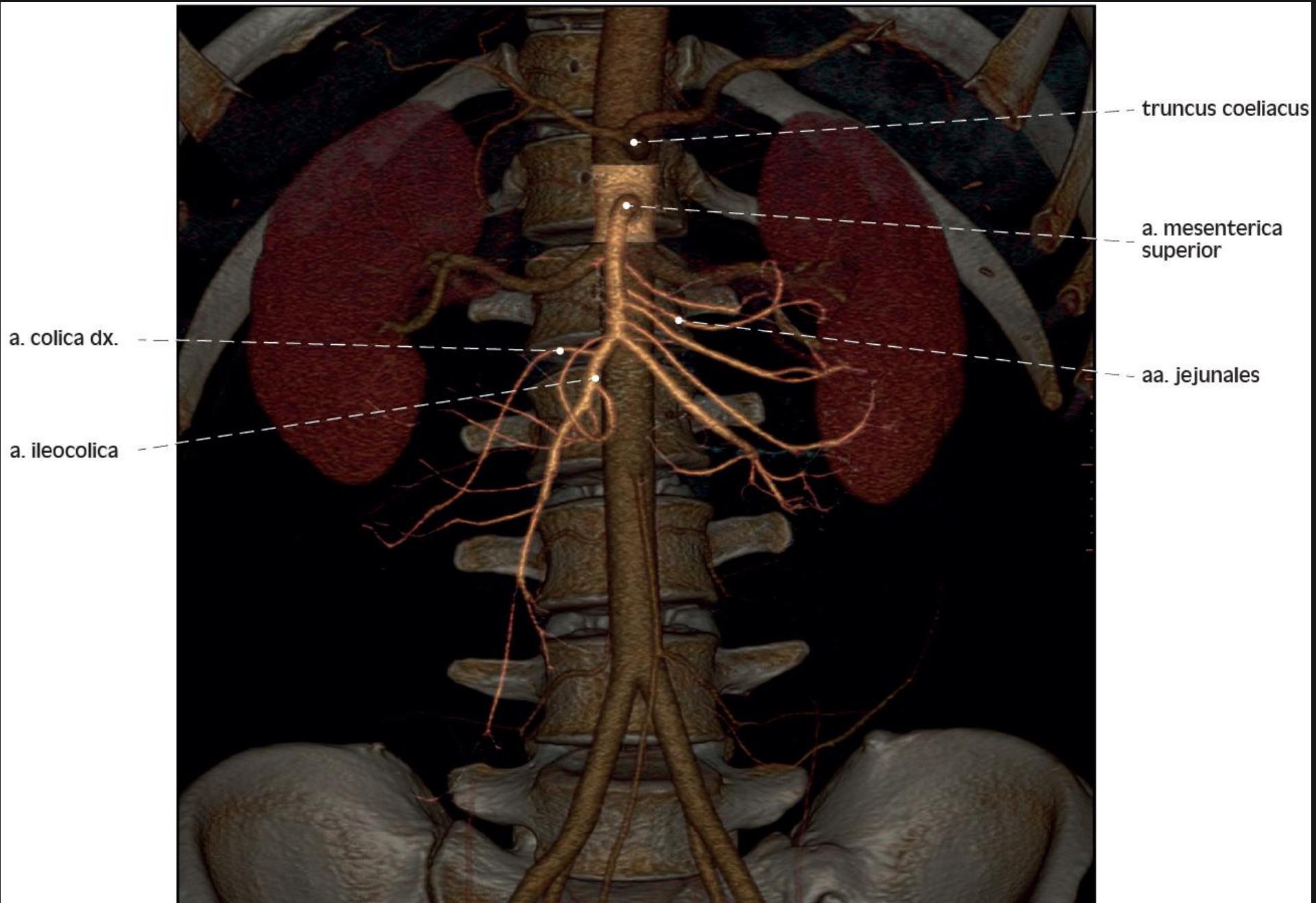
a. subclavia sin.

arcus aortae

aorta thoracica

ren sin.





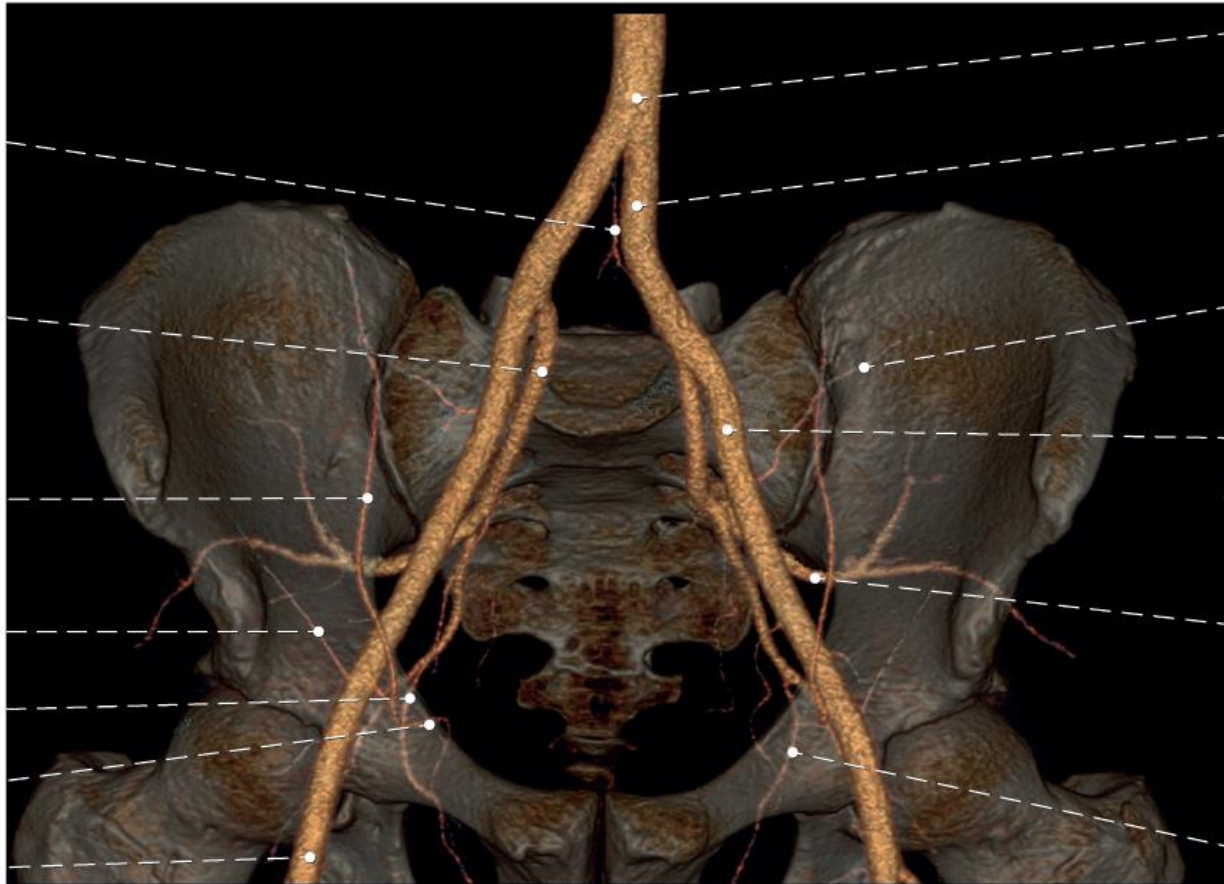
truncus coeliacus

a. mesenterica superior

aa. jejunales

a. colica dx.

a. ileocolica



aorta abdominalis

a. iliaca communis
sin.

a. iliolumbalis

a. iliaca externa

a. glutea superior

a. obturatoria

a. sacralis mediana

a. iliaca interna

a. epigastrica
inferior

a. circumflexa
ilium profunda

a. obturatoria

corona mortis

a. femoralis