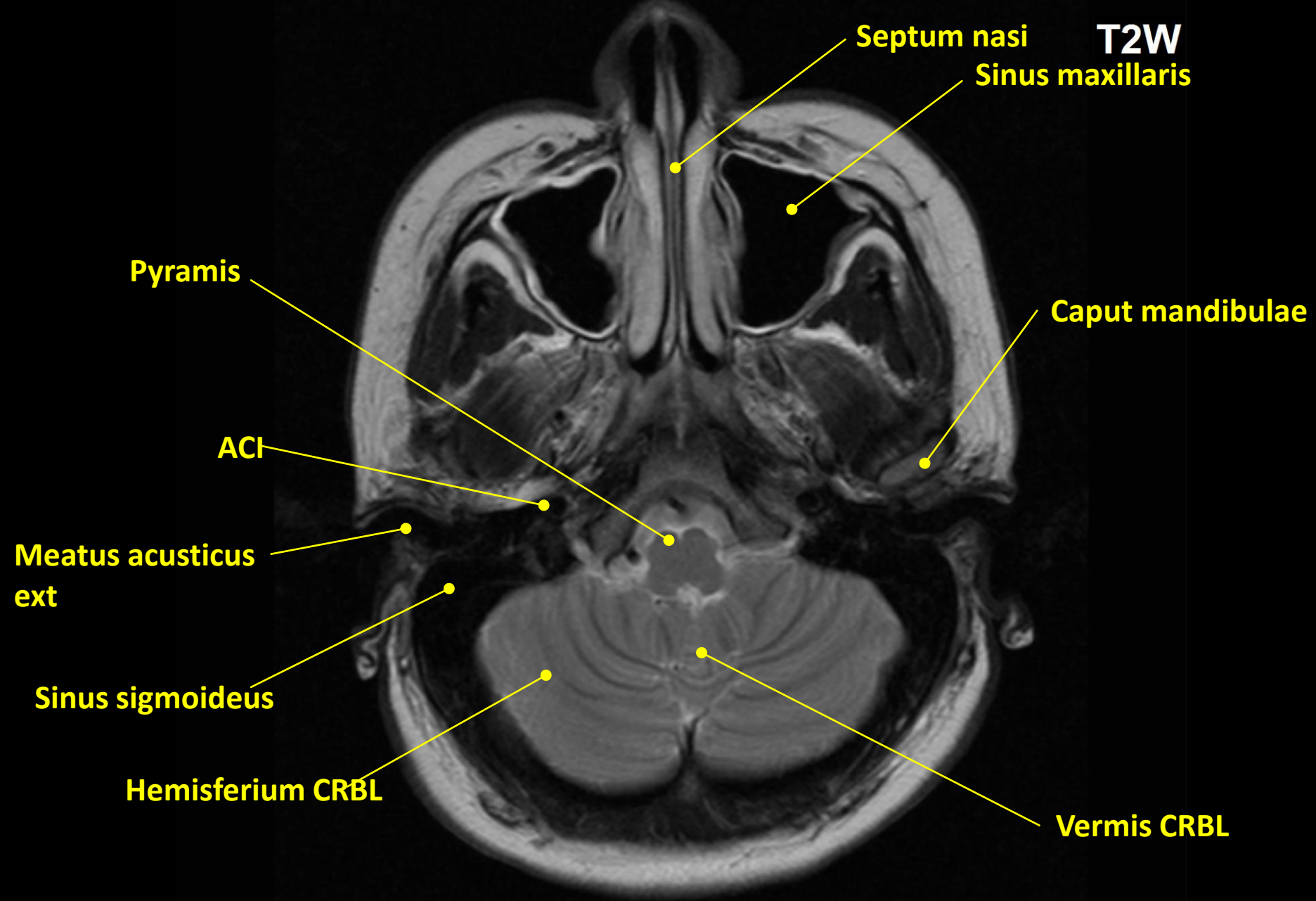


Ondřej Naňka
Institute of Anatomy



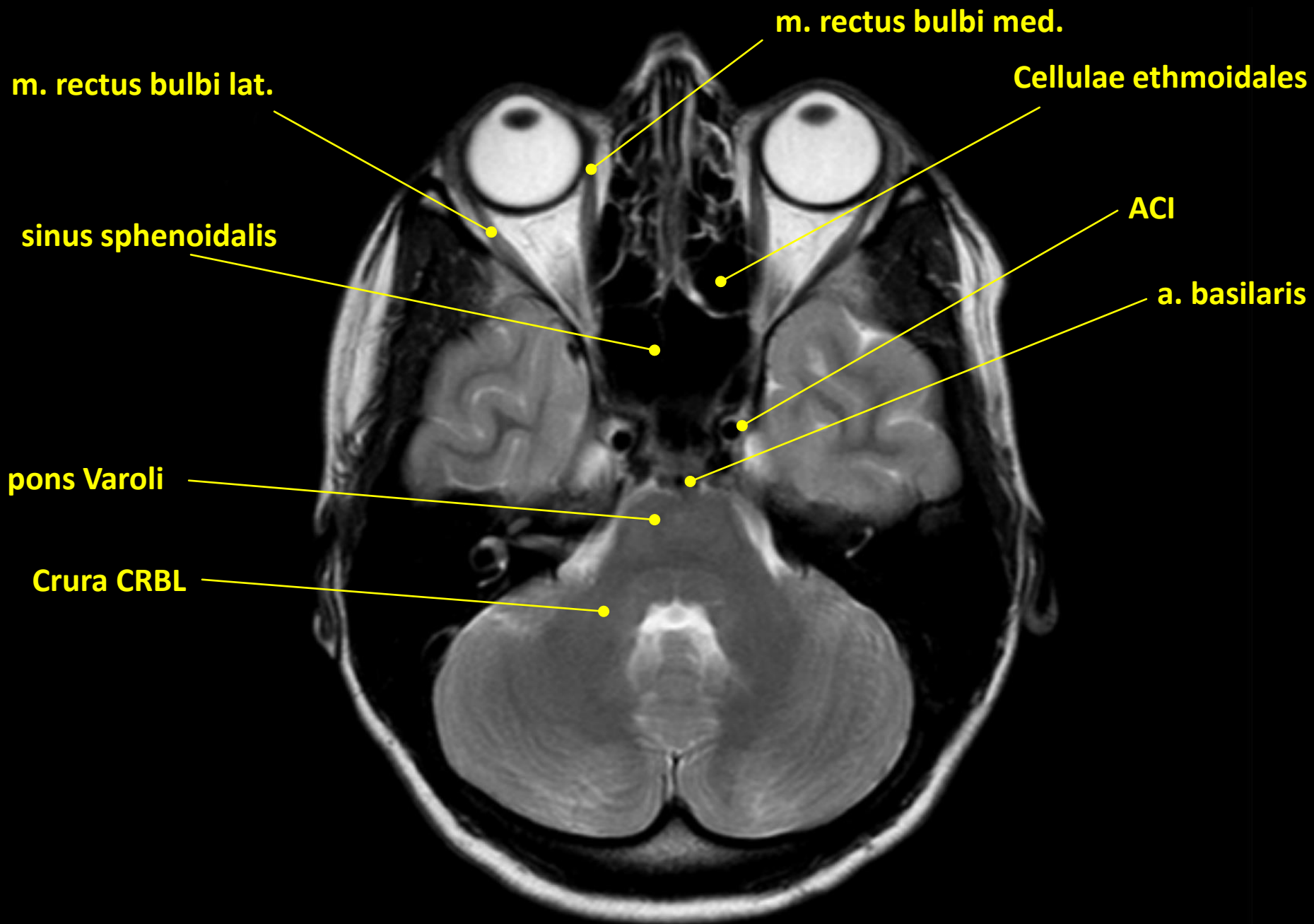
ZOBRAZENÍ CNS

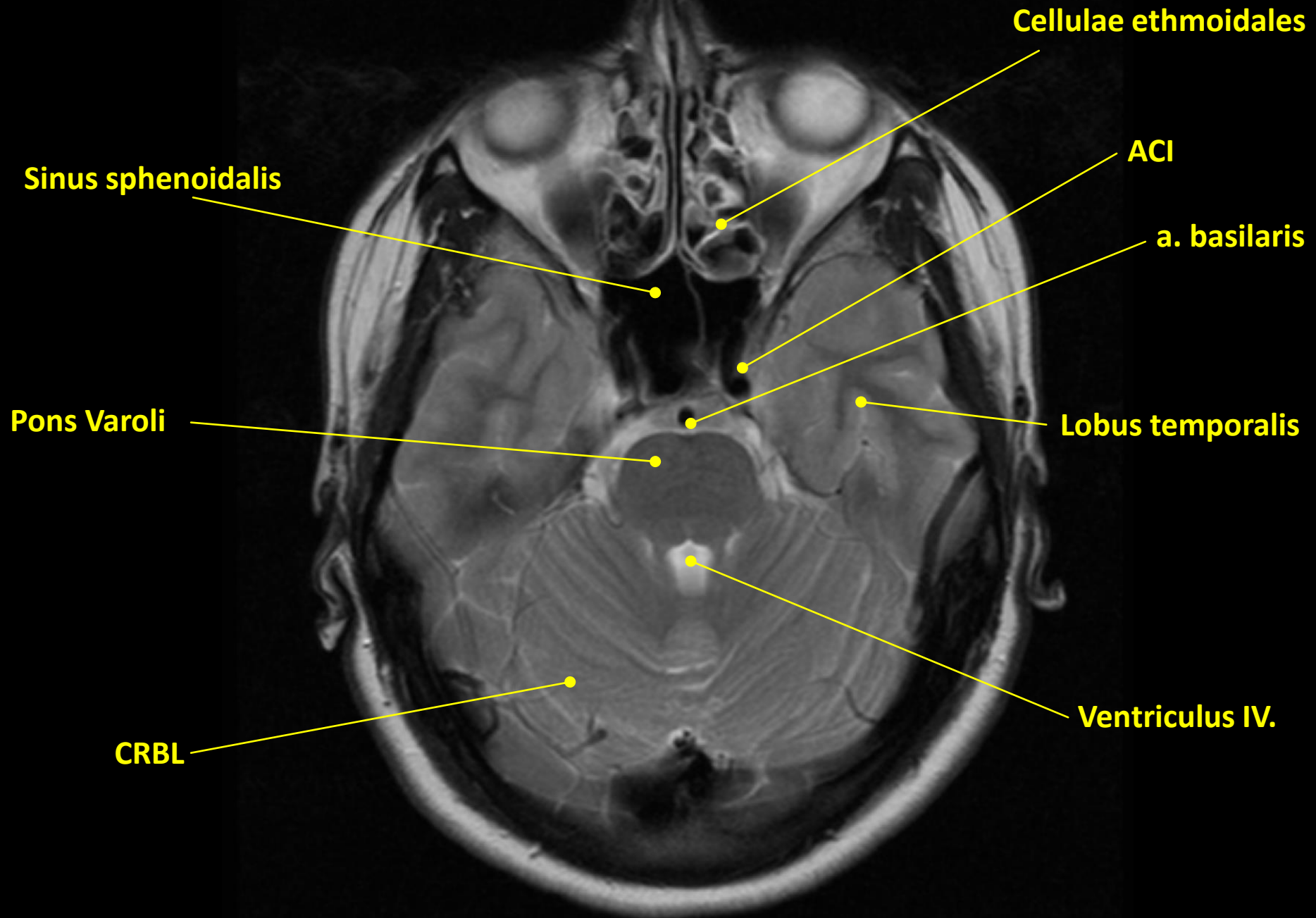
IMAGING OF CNS

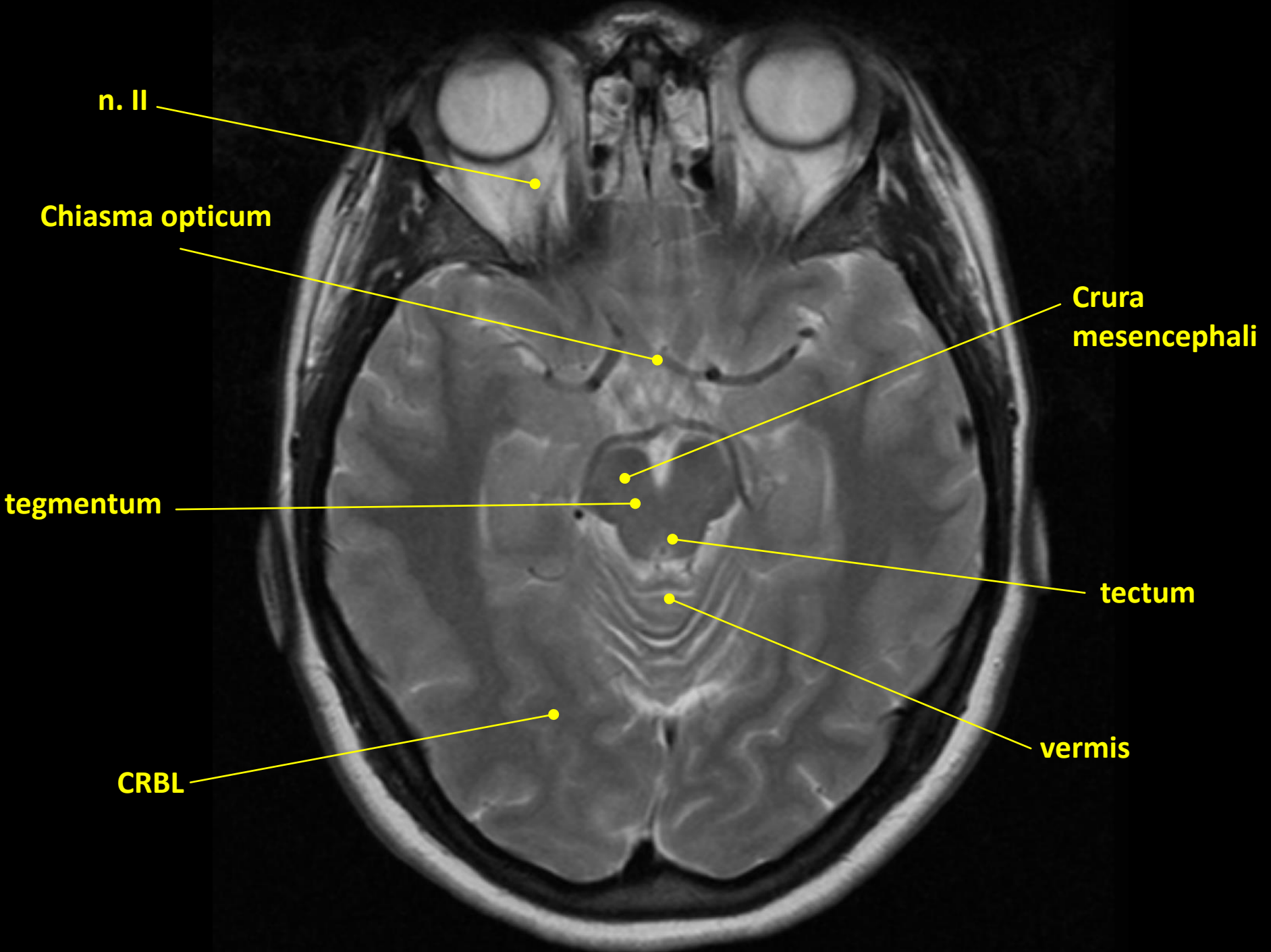


ACI – a. carotis interna
CRBL - cerebellum









n. II

Chiasma opticum

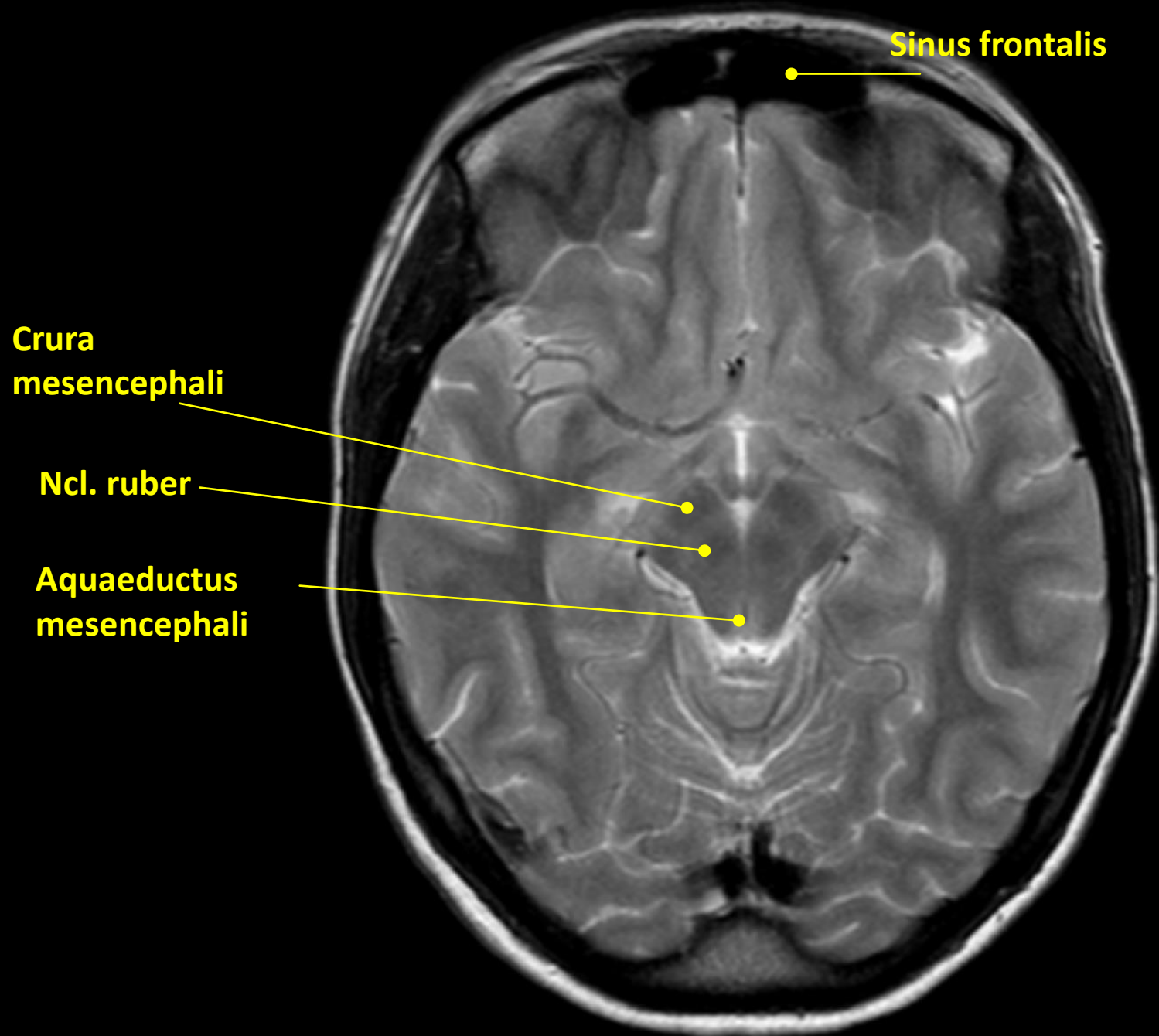
Crura
mesencephali

tegmentum

tectum

vermis

CRBL

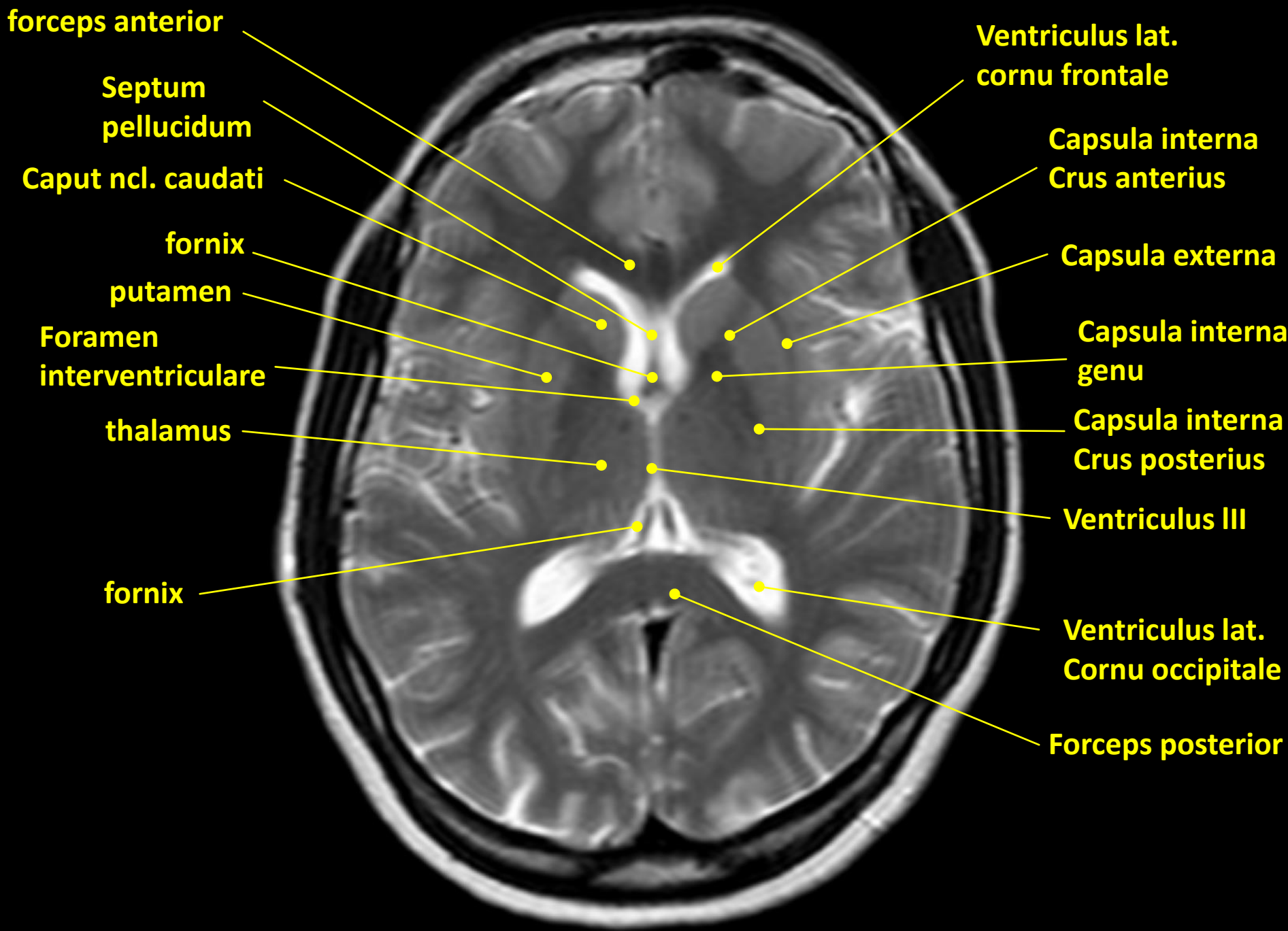


Sinus frontalis

Crura mesencephali

Ncl. ruber

Aquaeductus mesencephali



forceps anterior

**Septum
pellucidum**

Caput ncl. caudati

fornix

putamen

**Foramen
interventriculare**

thalamus

fornix

**Ventriculus lat.
cornu frontale**

**Capsula interna
Crus anterior**

Capsula externa

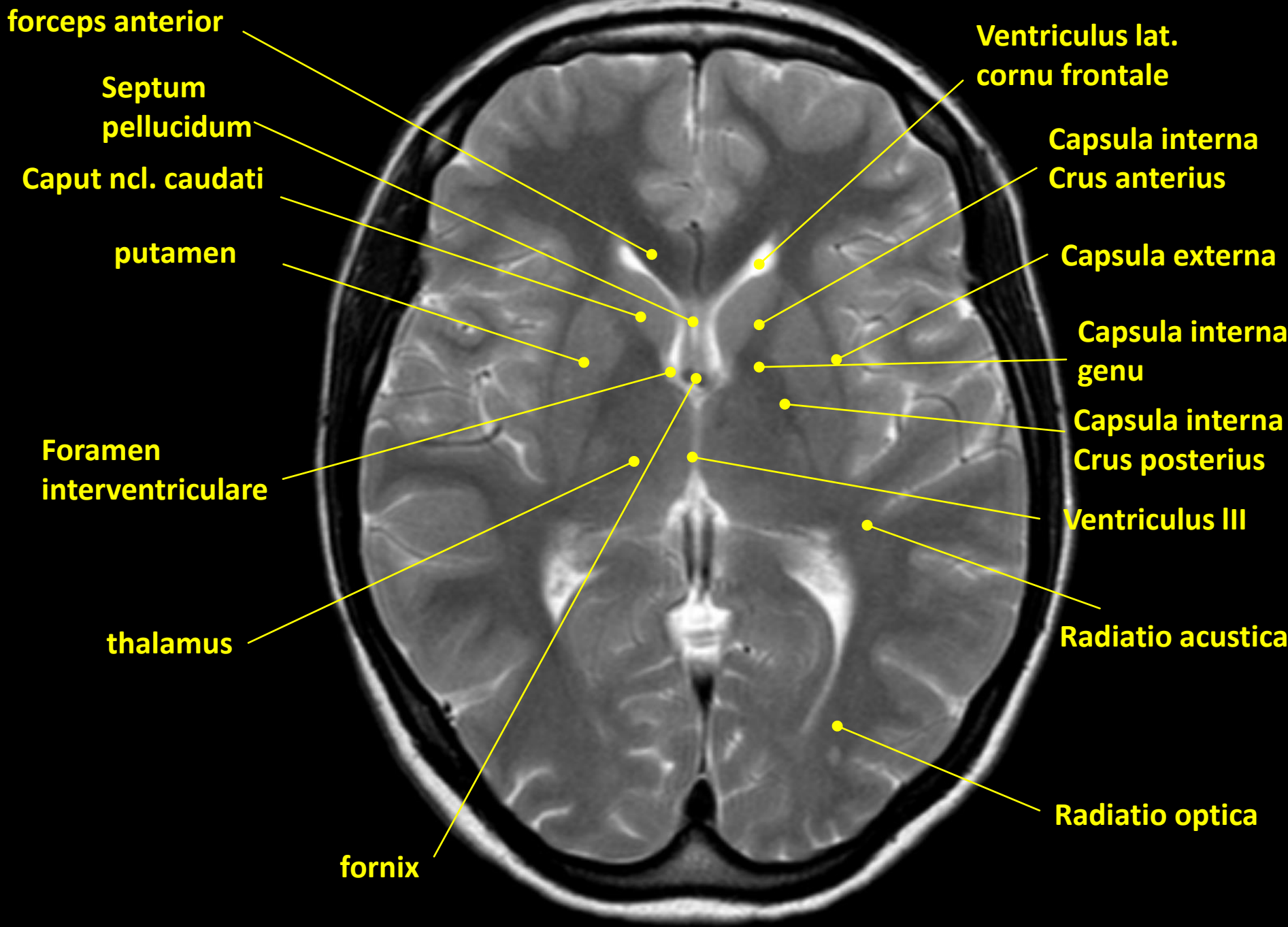
**Capsula interna
genu**

**Capsula interna
Crus posterior**

Ventriculus III

**Ventriculus lat.
Cornu occipitale**

Forceps posterior



forceps anterior

**Septum
pellucidum**

Caput ncl. caudati

putamen

**Foramen
interventriculare**

thalamus

fornix

**Ventriculus lat.
cornu frontale**

**Capsula interna
Crus anterior**

Capsula externa

**Capsula interna
genu**

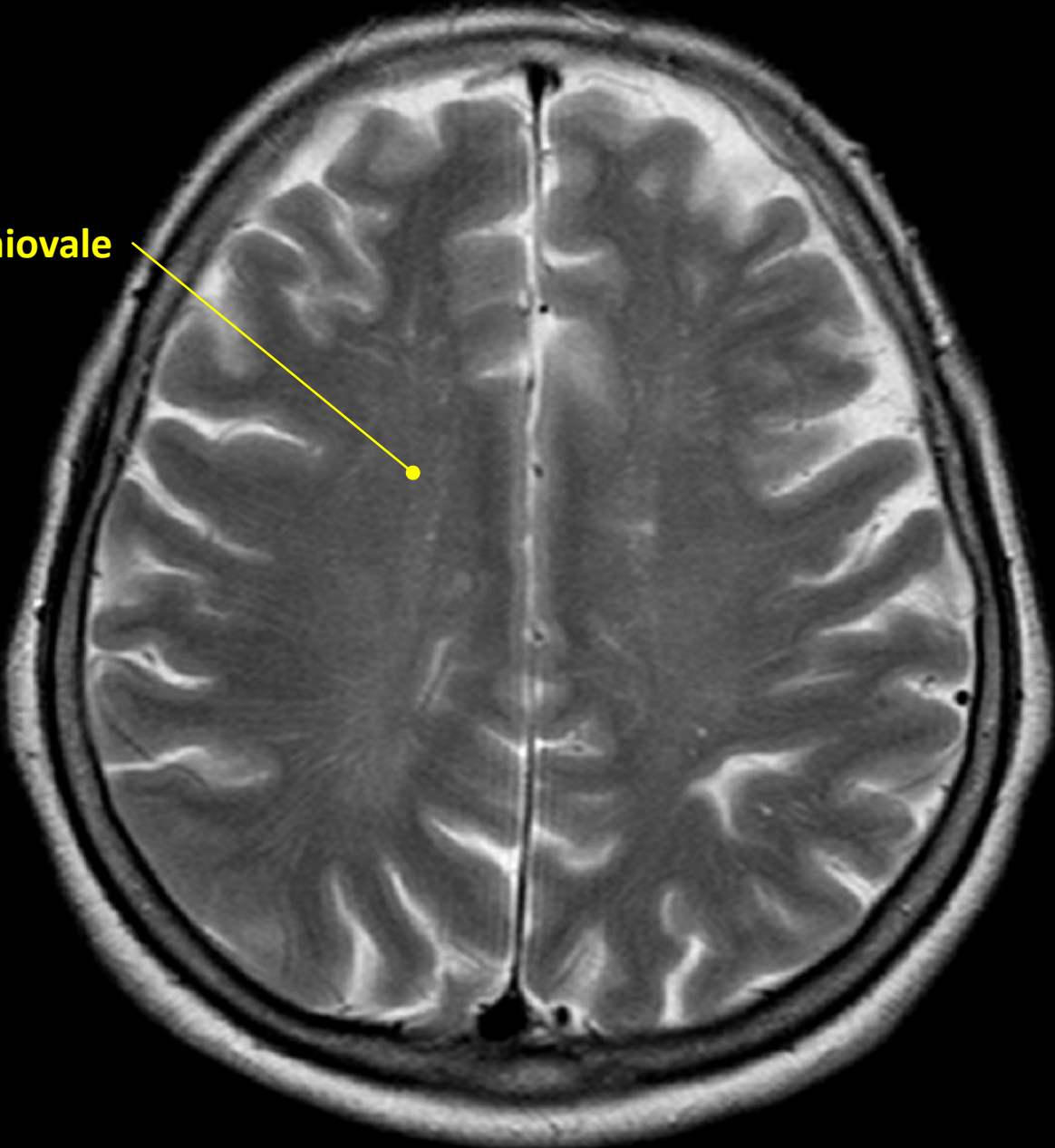
**Capsula interna
Crus posterior**

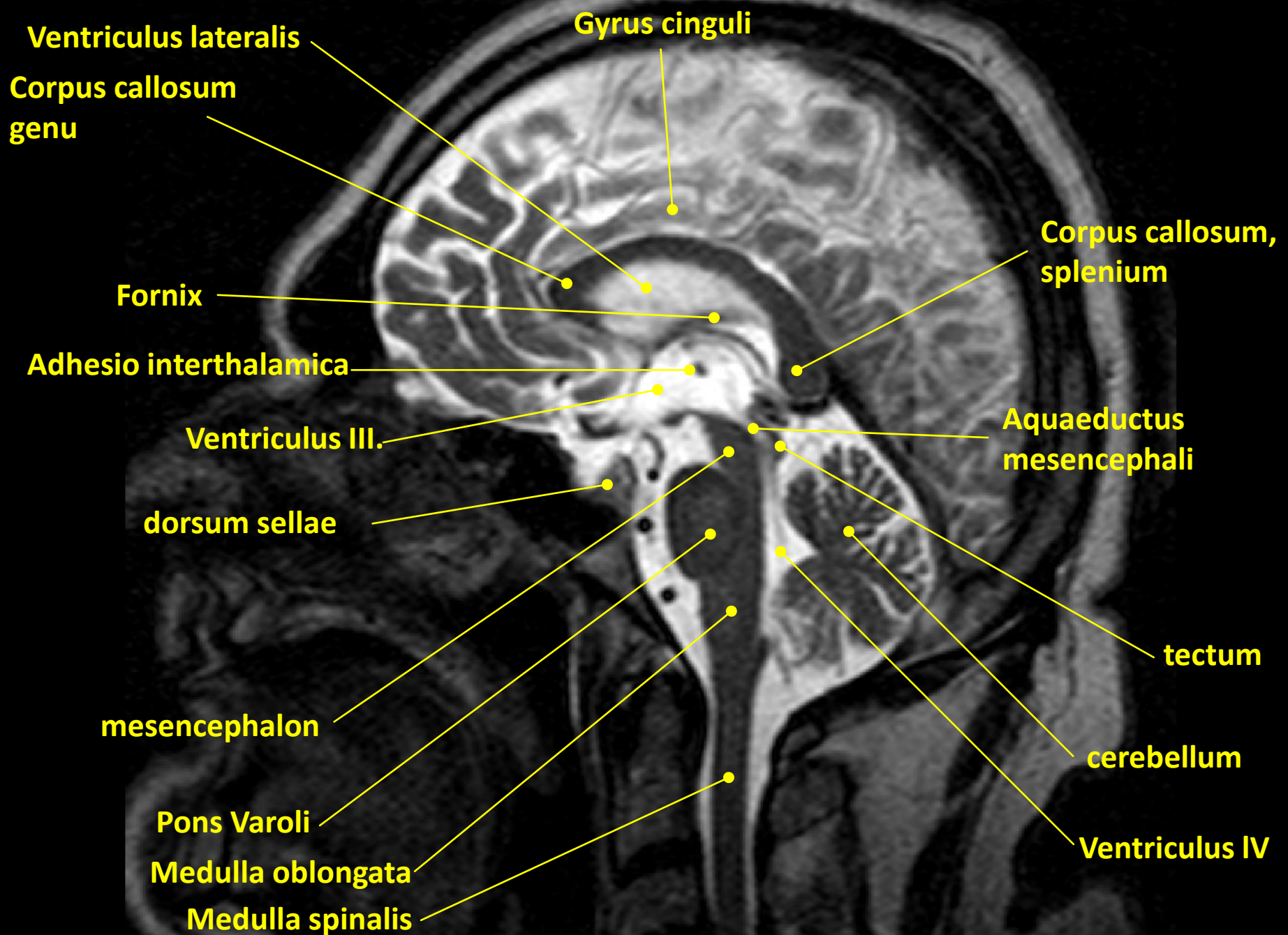
Ventriculus III

Radiatio acustica

Radiatio optica

Centrum semiovale





Ventriculus lateralis

Corpus callosum
genu

Fornix

Adhesio interthalamica

Ventriculus III.

dorsum sellae

mesencephalon

Pons Varoli

Medulla oblongata

Medulla spinalis

Gyrus cinguli

Corpus callosum,
splenium

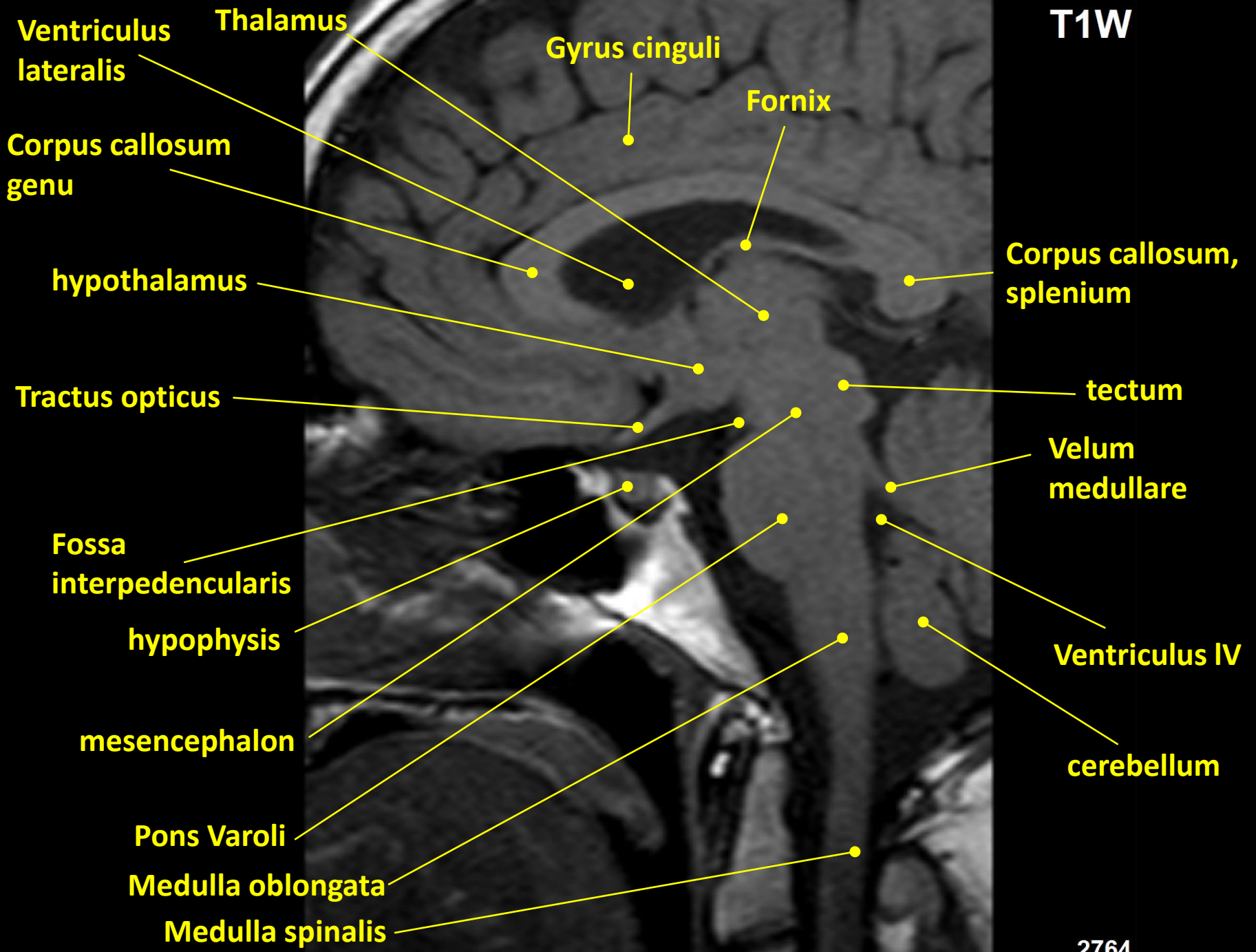
Aquaeductus
mesencephali

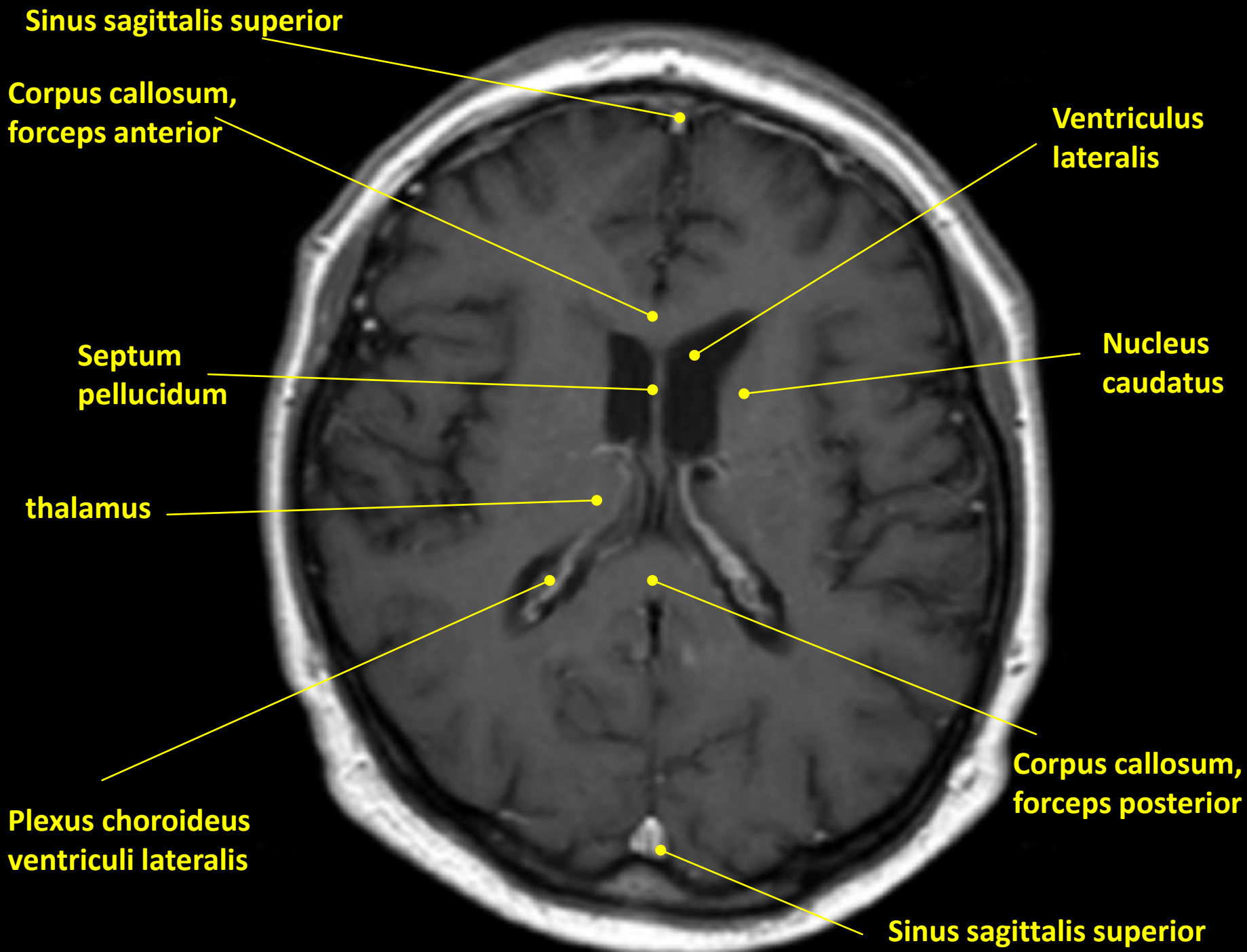
tectum

cerebellum

Ventriculus IV

T1W





MRI angiography, lateral view

a. callosomarginalis

a. pericallosa

a. polaris frontalis

a. cerebri media

a. cerebri posterior

a. occipitalis medialis

a. cerebri anterior

r. occipitotemporalis

ACI, pars cerebralis

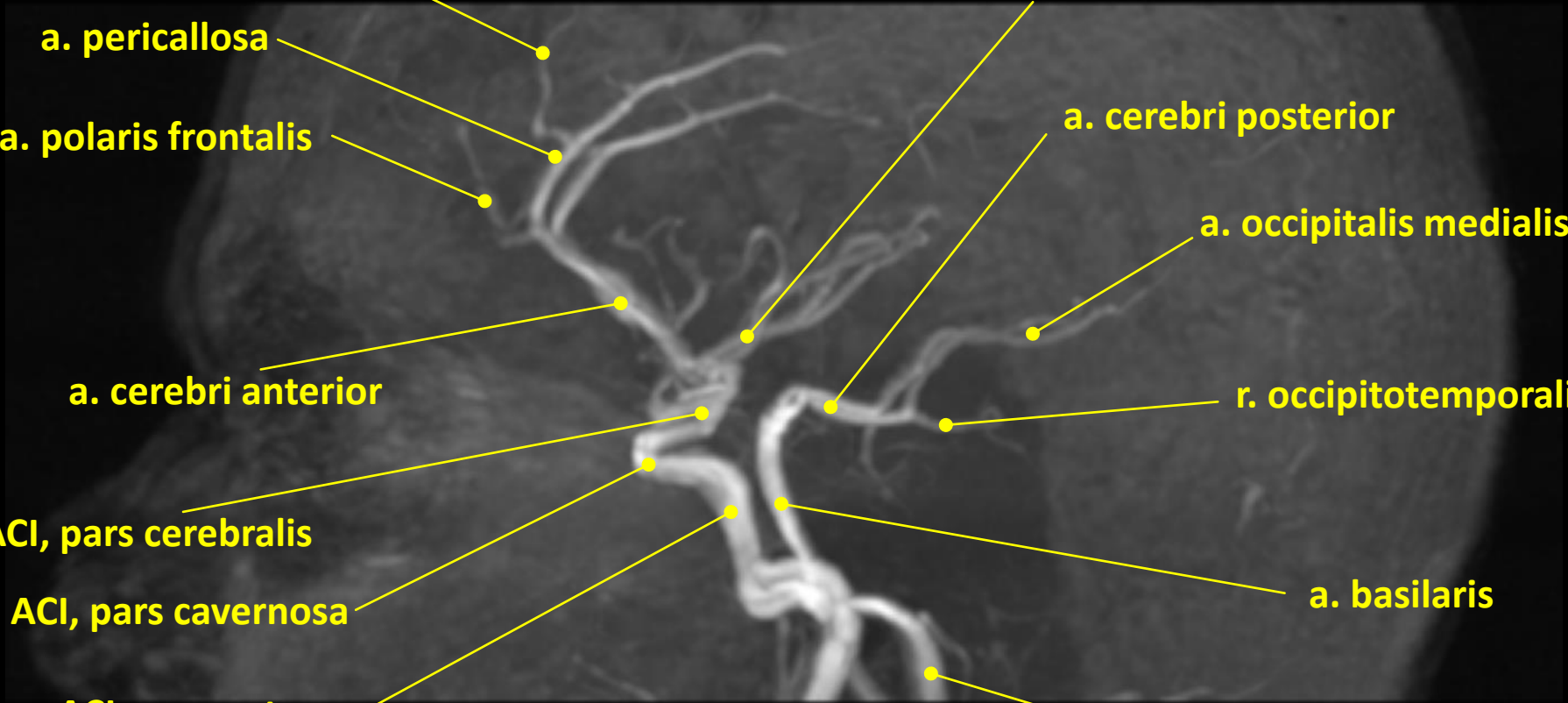
ACI, pars cavernosa

ACI, pars petrosa

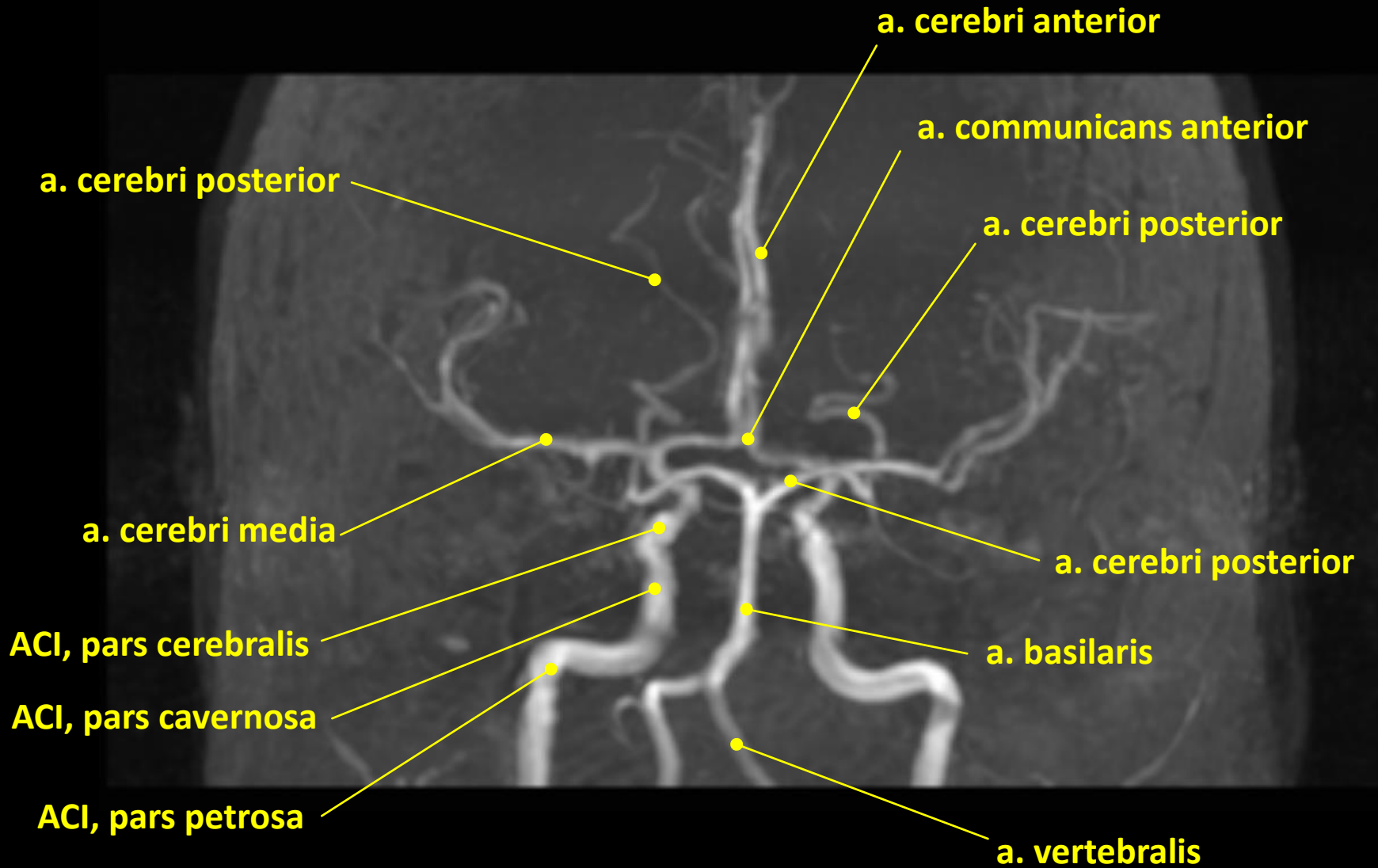
a. basilaris

a. vertebralis

ACI – a. carotis interna

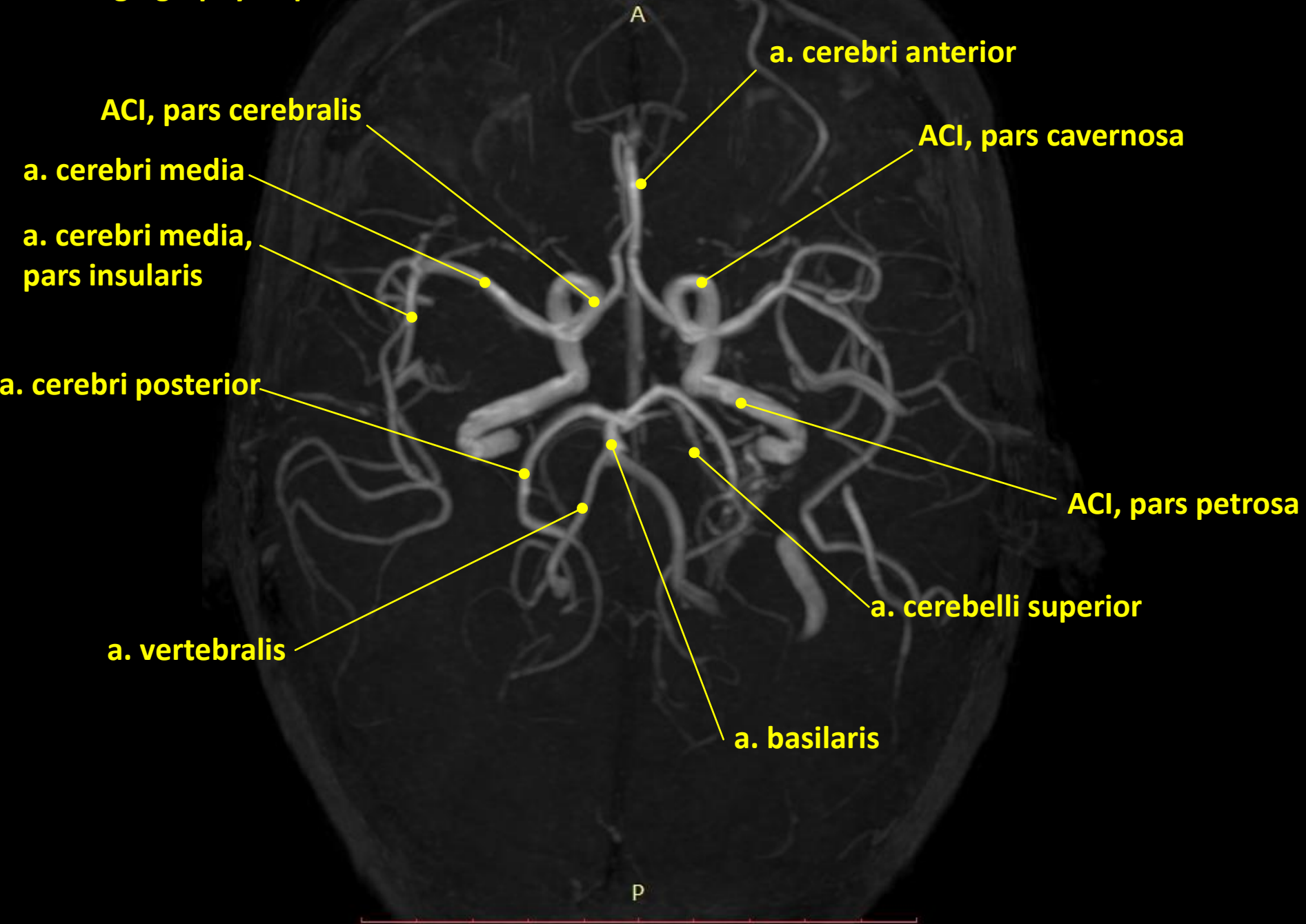


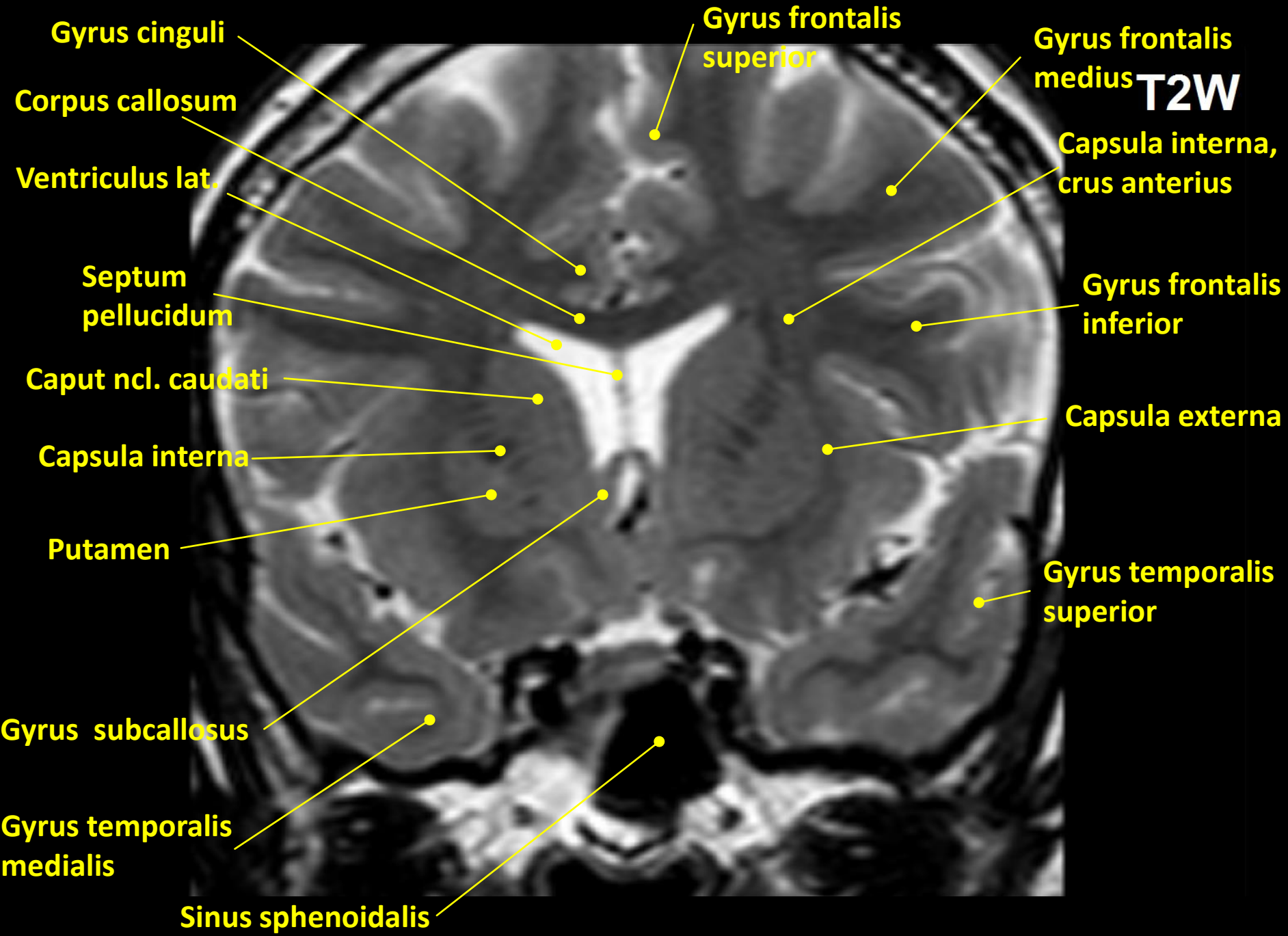
MRI angiography, frontal view

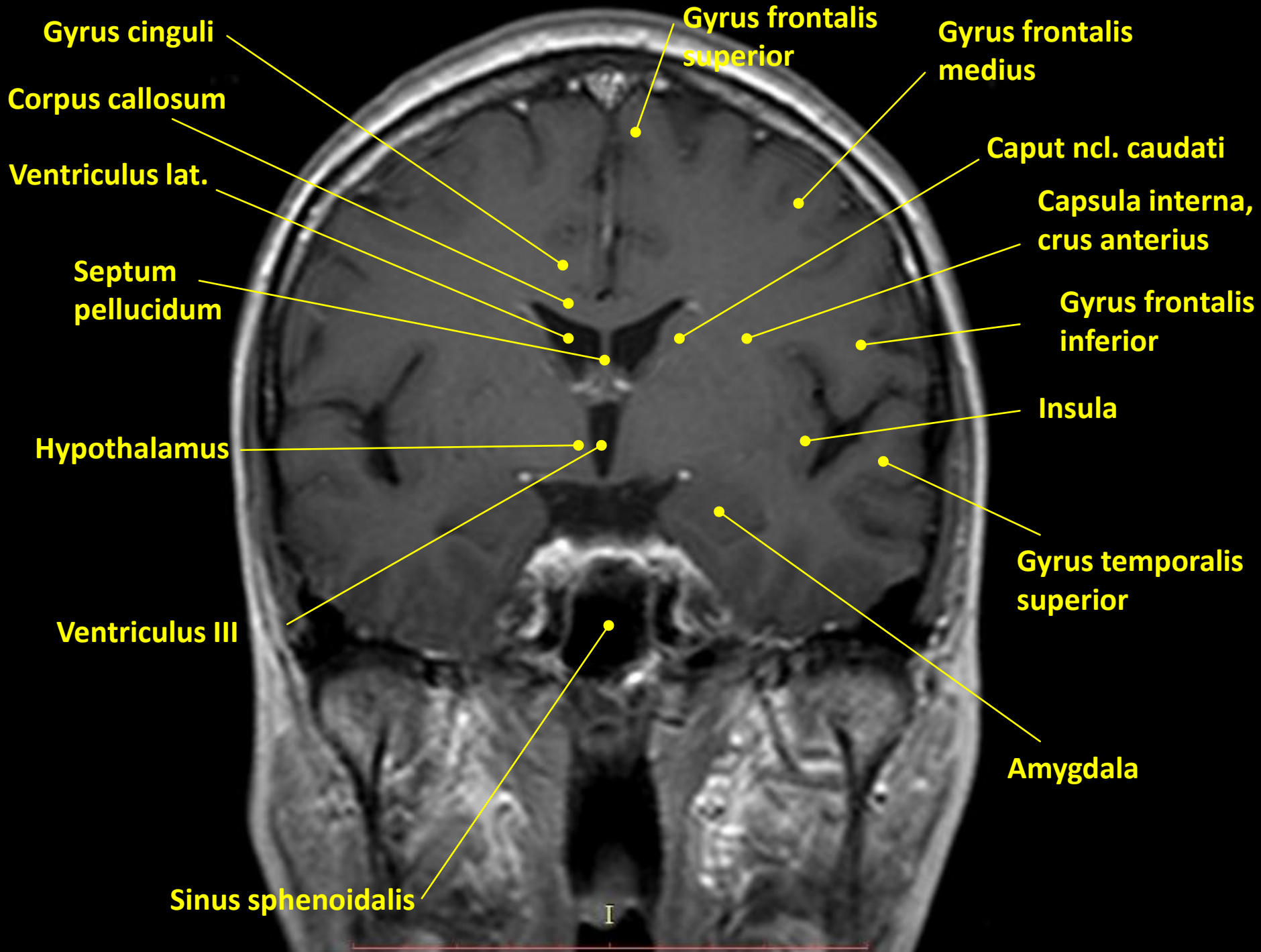


ACI – a. carotis interna

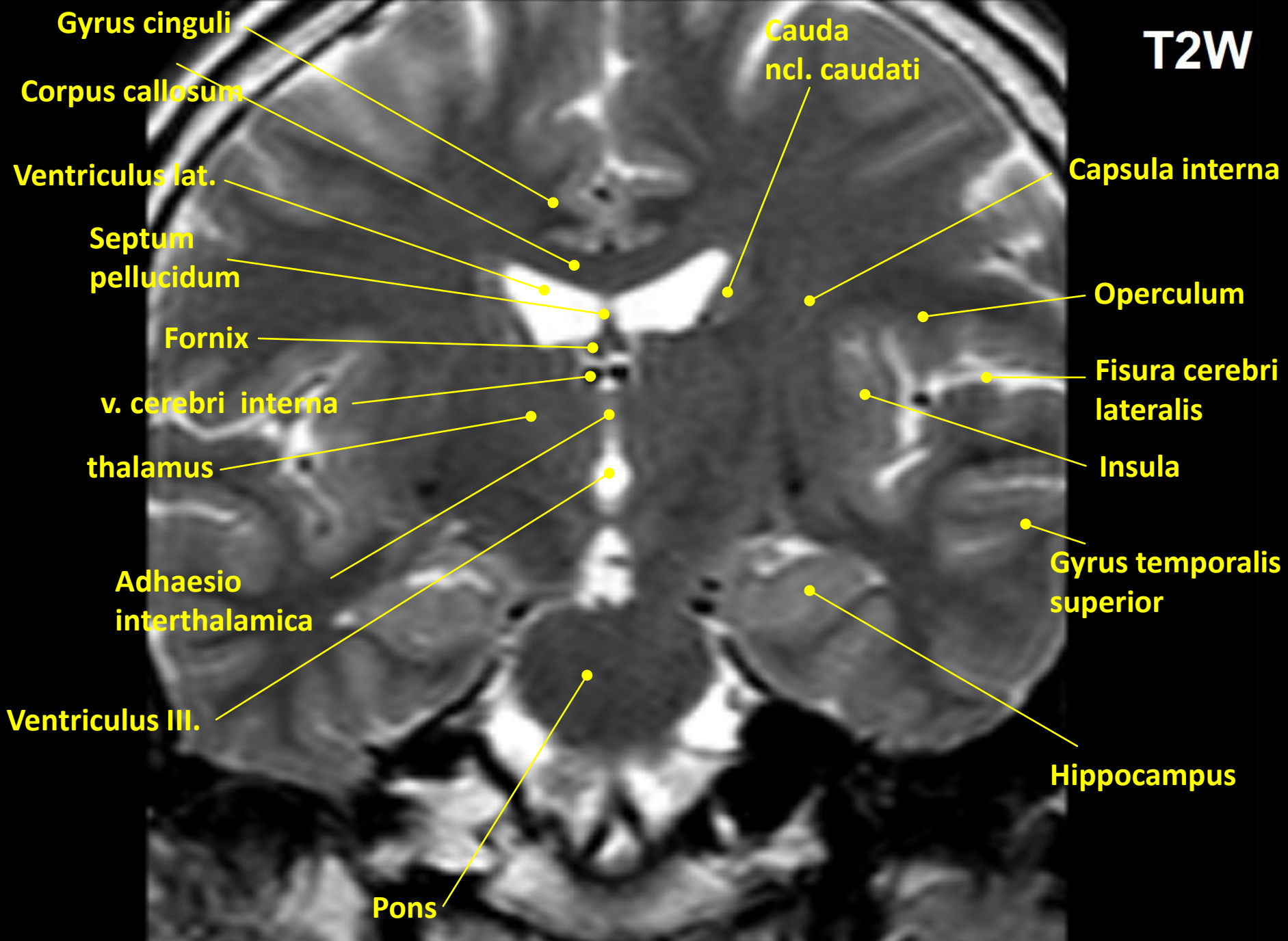
MRI angiography, superior view







T2W



Gyrus cinguli

Corpus callosum

Ventriculus lat.

Septum pellucidum

Fornix

v. cerebri interna

thalamus

Adhaesio interthalamica

Ventriculus III.

Pons

Cauda ncl. caudati

Capsula interna

Operculum

Fisura cerebri lateralis

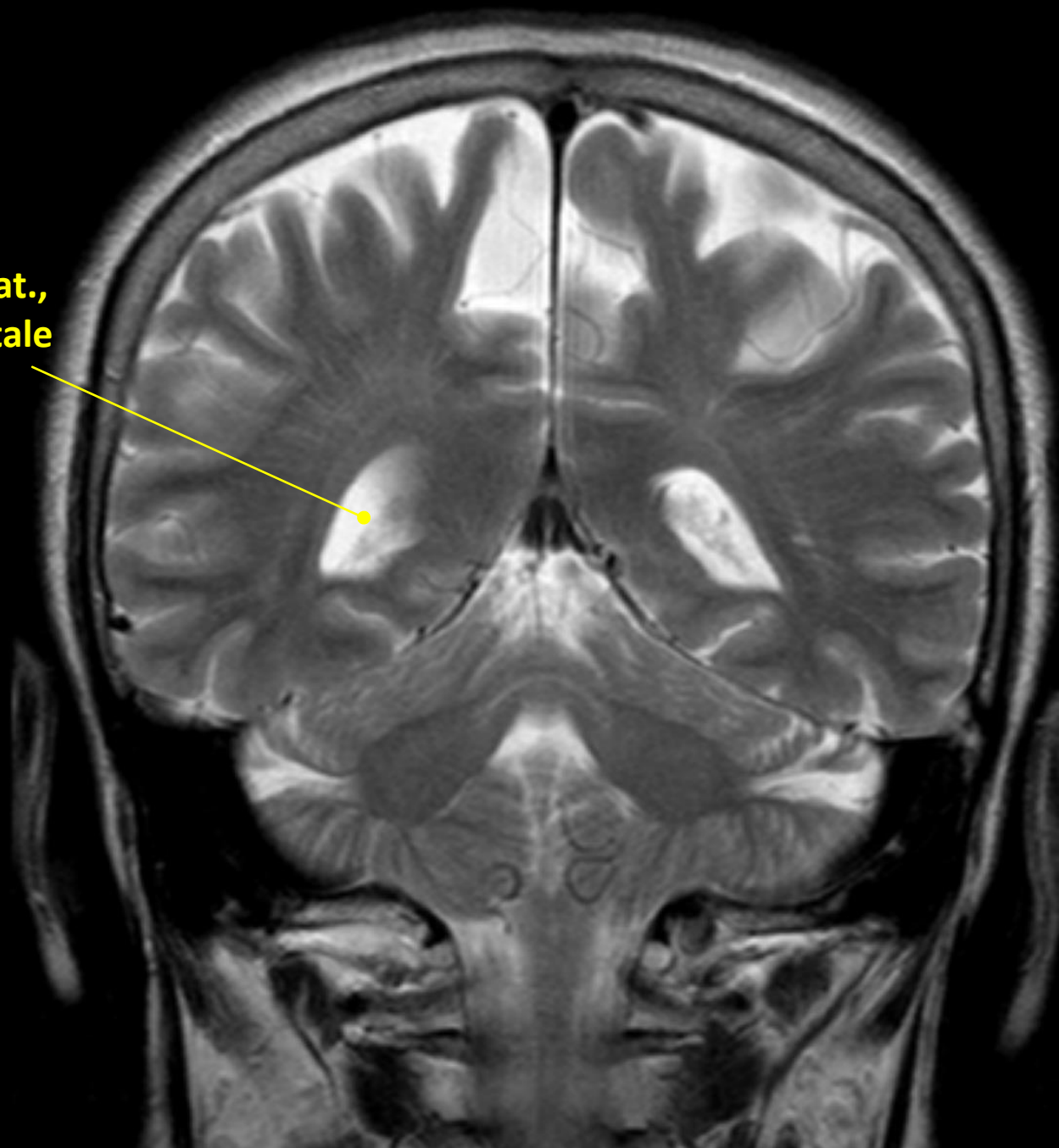
Insula

Gyrus temporalis superior

Hippocampus

T2W

Ventriculus lat.,
cornu occipitale



Lobus occipitalis

Hemispherium cerebelli

Vermis cerebelli

Sinus transversus

